

ARG42713 anti-AdSS 2 antibody

Package: 100 µl
Store at: -20°C

Summary

Product Description	Rabbit Polyclonal antibody recognizes AdSS 2
Tested Reactivity	Hu, Ms, Rat
Tested Application	FACS, ICC/IF, WB
Host	Rabbit
Clonality	Polyclonal
Isotype	IgG
Target Name	AdSS 2
Species	Human
Immunogen	Recombinant protein of Human AdSS 2.
Conjugation	Un-conjugated
Alternate Names	IMP--aspartate ligase 2; Adenylosuccinate synthetase, acidic isozyme; EC 6.3.4.4; Adenylosuccinate synthetase, liver isozyme; Adenylosuccinate synthetase isozyme 2; ADSS 2; L-type adenylosuccinate synthetase; AMPSase 2; ADEH; AdSS 2

Application Instructions

Application table	Application	Dilution
	FACS	1:20
	ICC/IF	1:20
	WB	1:1000
Application Note	* The dilutions indicate recommended starting dilutions and the optimal dilutions or concentrations should be determined by the scientist.	

Properties

Form	Liquid
Purification	Affinity purified.
Buffer	50 mM Tris-Glycine (pH 7.4), 150 mM NaCl, 0.01% Sodium azide, 40% Glycerol and 0.05% BSA.
Preservative	0.01% Sodium azide
Stabilizer	40% Glycerol and 0.05% BSA
Concentration	Batch dependent
Storage instruction	For continuous use, store undiluted antibody at 2-8°C for up to a week. For long-term storage, aliquot and store at -20°C. Storage in frost free freezers is not recommended. Avoid repeated freeze/thaw cycles. Suggest spin the vial prior to opening. The antibody solution should be gently mixed before use.

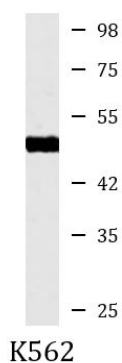
Note

For laboratory research only, not for drug, diagnostic or other use.

Bioinformation

Gene Symbol	ADSS
Gene Full Name	adenylosuccinate synthase
Background	This gene encodes the enzyme adenylosuccinate synthetase which catalyzes the first committed step in the conversion of inosine monophosphate to adenosine monophosphate. A pseudogene of this gene is found on chromosome 17. [provided by RefSeq, Nov 2010]
Function	Plays an important role in the de novo pathway and in the salvage pathway of purine nucleotide biosynthesis. Catalyzes the first committed step in the biosynthesis of AMP from IMP. [UniProt]
Calculated Mw	50 kDa
Cellular Localization	Cytoplasm. Note=Partially associated with particulate fractions. [UniProt]

Images



ARG42713 anti-AdSS 2 antibody WB image

Western blot: K562 cell lysate stained with ARG42713 anti-AdSS 2 antibody at 1:1000 dilution.