

ARG42802 anti-EPS15R antibody

Package: 100 µl
Store at: -20°C

Summary

Product Description	Rabbit Polyclonal antibody recognizes EPS15R
Tested Reactivity	Hu
Tested Application	ICC/IF, IHC-P, WB
Host	Rabbit
Clonality	Polyclonal
Isotype	IgG
Target Name	EPS15R
Species	Human
Immunogen	Synthetic peptide of Human EPS15R.
Conjugation	Un-conjugated
Alternate Names	EPS15R; Eps15R; Epidermal growth factor receptor substrate 15-like 1; Eps15-related protein

Application Instructions

Application table	Application	Dilution
	ICC/IF	1:20 - 1:50
	IHC-P	1:20
	WB	1:5000
Application Note	* The dilutions indicate recommended starting dilutions and the optimal dilutions or concentrations should be determined by the scientist.	
Positive Control	K562	
Observed Size	~ 135 kDa	

Properties

Form	Liquid
Purification	Affinity purified.
Buffer	50 mM Tris-Glycine (pH 7.4), 150 mM NaCl, 0.01% Sodium azide, 40% Glycerol and 0.05% BSA.
Preservative	0.01% Sodium azide
Stabilizer	40% Glycerol and 0.05% BSA
Concentration	Batch dependent
Storage instruction	For continuous use, store undiluted antibody at 2-8°C for up to a week. For long-term storage, aliquot and store at -20°C. Storage in frost free freezers is not recommended. Avoid repeated freeze/thaw cycles. Suggest spin the vial prior to opening. The antibody solution should be gently mixed before use.

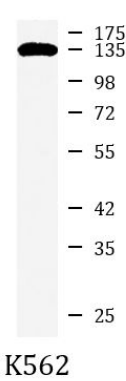
Note

For laboratory research only, not for drug, diagnostic or other use.

Bioinformation

Gene Symbol	EPS15L1
Gene Full Name	epidermal growth factor receptor pathway substrate 15-like 1
Function	Seems to be a constitutive component of clathrin-coated pits that is required for receptor-mediated endocytosis. Involved in endocytosis of integrin beta-1 (ITGB1) and transferrin receptor (TFR); internalization of ITGB1 as DAB2-dependent cargo but not TFR seems to require association with DAB2. [UniProt]
Calculated Mw	94 kDa
PTM	Phosphorylated on tyrosine residues by EGFR. [UniProt]
Cellular Localization	Cell membrane; Peripheral membrane protein. Nucleus. Membrane, coated pit. Note=Localized to plasma membrane coated pits. [UniProt]

Images



ARG42802 anti-EPS15R antibody WB image

Western blot: K562 cell lysate stained with ARG42802 anti-EPS15R antibody at 1:1000 dilution.