

## ARG42817 anti-CYFIP1 antibody

Package: 100 µl  
Store at: -20°C

### Summary

Product Description	Rabbit Polyclonal antibody recognizes CYFIP1
Tested Reactivity	Hu, Ms, Rat
Tested Application	FACS, ICC/IF, WB
Host	Rabbit
Clonality	Polyclonal
Isotype	IgG
Target Name	CYFIP1
Species	Human
Immunogen	Synthetic peptide of Human CYFIP1.
Conjugation	Un-conjugated
Alternate Names	Sra-1; p140sra-1; SRA-1; P140SRA-1; SRA1; Cytoplasmic FMR1-interacting protein 1; SHYC; Specifically Rac1-associated protein 1

### Application Instructions

Application table	Application	Dilution
	FACS	1:20
	ICC/IF	1:50 - 1:200
	WB	1:1000 - 1:5000
Application Note	* The dilutions indicate recommended starting dilutions and the optimal dilutions or concentrations should be determined by the scientist.	
Positive Control	HeLa	
Observed Size	~ 145 kDa	

### Properties

Form	Liquid
Purification	Affinity purified.
Buffer	50 mM Tris-Glycine (pH 7.4), 150 mM NaCl, 0.01% Sodium azide, 40% Glycerol and 0.05% BSA.
Preservative	0.01% Sodium azide
Stabilizer	40% Glycerol and 0.05% BSA
Concentration	Batch dependent
Storage instruction	For continuous use, store undiluted antibody at 2-8°C for up to a week. For long-term storage, aliquot and store at -20°C. Storage in frost free freezers is not recommended. Avoid repeated freeze/thaw

cycles. Suggest spin the vial prior to opening. The antibody solution should be gently mixed before use.

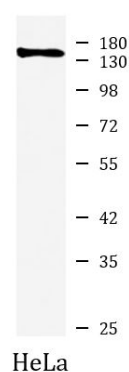
#### Note

For laboratory research only, not for drug, diagnostic or other use.

## Bioinformation

Gene Symbol	CYFIP1
Gene Full Name	cytoplasmic FMR1 interacting protein 1
Background	This gene encodes a protein that regulates cytoskeletal dynamics and protein translation. The encoded protein is a component of the WAVE regulatory complex (WRC), which promotes actin polymerization. This protein also interacts with the Fragile X mental retardation protein (FMRP) and translation initiation factor 4E to inhibit protein translation. A large chromosomal deletion including this gene is associated with increased risk of schizophrenia and epilepsy in human patients. Reduced expression of this gene has been observed in various human cancers and the encoded protein may inhibit tumor invasion. [provided by RefSeq, May 2017]
Function	Component of the CYFIP1-EIF4E-FMR1 complex which binds to the mRNA cap and mediates translational repression. In the CYFIP1-EIF4E-FMR1 complex this subunit is an adapter between EIF4E and FMR1. Promotes the translation repression activity of FMR1 in brain probably by mediating its association with EIF4E and mRNA (By similarity). Regulates formation of membrane ruffles and lamellipodia. Plays a role in axon outgrowth. Binds to F-actin but not to RNA. Part of the WAVE complex that regulates actin filament reorganization via its interaction with the Arp2/3 complex. Actin remodeling activity is regulated by RAC1. Regulator of epithelial morphogenesis. As component of the WAVE1 complex, required for BDNF-NTRK2 endocytic trafficking and signaling from early endosomes (By similarity). May act as an invasion suppressor in cancers. [UniProt]
Calculated Mw	145 kDa
Cellular Localization	Cytoplasm. Cytoplasm, perinuclear region. Cell projection, lamellipodium. Cell projection, ruffle. Cell junction, synapse, synaptosome. Note=Highly expressed in the perinuclear region (By similarity). Enriched in synaptosomes (By similarity). Also enriched in membrane ruffles and at the tips of lamellipodia (By similarity). [UniProt]

## Images



ARG42817 anti-CYFIP1 antibody WB image

Western blot: HeLa cell lysate stained with ARG42817 anti-CYFIP1 antibody at 1:1000 dilution.