

ARG42839 anti-Glypican 5 antibody

Package: 50 µg
Store at: -20°C

Summary

Product Description	Rabbit Polyclonal antibody recognizes Glypican 5
Tested Reactivity	Hu
Tested Application	FACS, ICC/IF, WB
Host	Rabbit
Clonality	Polyclonal
Isotype	IgG
Target Name	Glypican 5
Species	Human
Immunogen	Recombinant protein corresponding to Q28-D538 of Human Glypican 5.
Conjugation	Un-conjugated
Alternate Names	Glypican-5

Application Instructions

Application table	Application	Dilution
	FACS	1:150 - 1:500
	ICC/IF	1:200 - 1:1000
	WB	1:500 - 1:2000
Application Note	* The dilutions indicate recommended starting dilutions and the optimal dilutions or concentrations should be determined by the scientist.	
Observed Size	~ 64 kDa	

Properties

Form	Liquid
Purification	Affinity purification with immunogen.
Buffer	0.2% Na ₂ HPO ₄ , 0.9% NaCl, 0.01% Sodium azide and 4% Trehalose.
Preservative	0.01% Sodium azide
Stabilizer	4% Trehalose
Concentration	0.5 mg/ml
Storage instruction	For continuous use, store undiluted antibody at 2-8°C for up to a week. For long-term storage, aliquot and store at -20°C or below. Storage in frost free freezers is not recommended. Avoid repeated freeze/thaw cycles. Suggest spin the vial prior to opening. The antibody solution should be gently mixed before use.

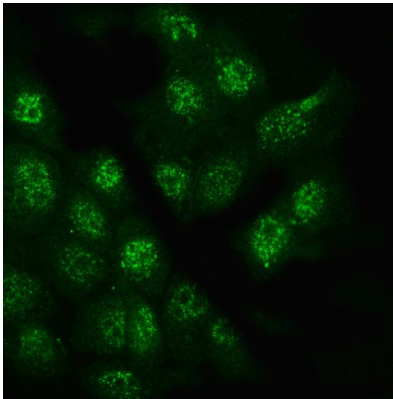
Note

For laboratory research only, not for drug, diagnostic or other use.

Bioinformation

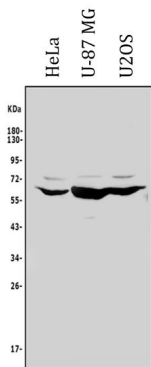
Gene Symbol	GPC5
Gene Full Name	glypican 5
Background	Cell surface heparan sulfate proteoglycans are composed of a membrane-associated protein core substituted with a variable number of heparan sulfate chains. Members of the glypican-related integral membrane proteoglycan family (GRIPS) contain a core protein anchored to the cytoplasmic membrane via a glycosyl phosphatidylinositol linkage. These proteins may play a role in the control of cell division and growth regulation. [provided by RefSeq, Jul 2008]
Function	Cell surface proteoglycan that bears heparan sulfate. [UniProt]
Calculated Mw	64 kDa
Cellular Localization	Cell membrane; Lipid-anchor, GPI-anchor; Extracellular side. Secreted glypican-5: Secreted, extracellular space. [UniProt]

Images



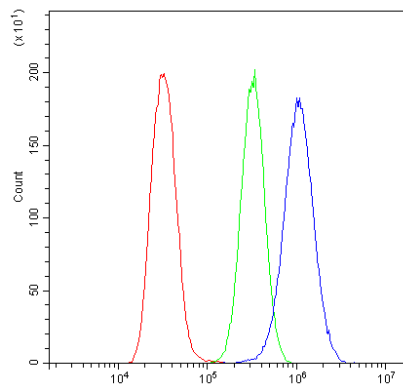
ARG42839 anti-Glypican 5 antibody ICC/IF image

Immunofluorescence: A431 cells were blocked with 10% goat serum and then stained with ARG42839 anti-Glypican 5 antibody (green) at 4 µg/ml dilution, overnight at 4°C.



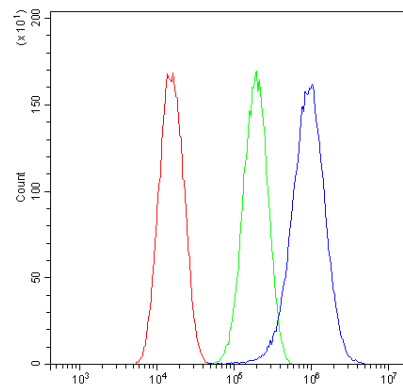
ARG42839 anti-Glypican 5 antibody WB image

Western blot: 50 µg of sample under reducing conditions. HeLa, U-87 MG and U2OS whole cell lysates stained with ARG42839 anti-Glypican 5 antibody at 0.5 µg/ml dilution, overnight at 4°C.



ARG42839 anti-Glypican 5 antibody FACS image

Flow Cytometry: U2OS cells were blocked with 10% normal goat serum and then stained with ARG42839 anti-Glypican 5 antibody (blue) at $1 \mu\text{g}/10^6$ cells for 30 min at 20°C , followed by incubation with DyLight[®]488 labelled secondary antibody. Isotype control antibody (green) was Rabbit IgG ($1 \mu\text{g}/10^6$ cells) used under the same conditions. Unlabelled sample (red) was also used as a control.



ARG42839 anti-Glypican 5 antibody FACS image

Flow Cytometry: U-87 MG cells were blocked with 10% normal goat serum and then stained with ARG42839 anti-Glypican 5 antibody (blue) at $1 \mu\text{g}/10^6$ cells for 30 min at 20°C , followed by incubation with DyLight[®]488 labelled secondary antibody. Isotype control antibody (green) was Rabbit IgG ($1 \mu\text{g}/10^6$ cells) used under the same conditions. Unlabelled sample (red) was also used as a control.