

ARG42844 anti-EPS15R antibody

Package: 100 µl
Store at: -20°C

Summary

Product Description	Rabbit Polyclonal antibody recognizes EPS15R
Tested Reactivity	Hu
Tested Application	WB
Host	Rabbit
Clonality	Polyclonal
Isotype	IgG
Target Name	EPS15R
Species	Human
Immunogen	Recombinant fusion protein corresponding to aa. 475-754 of Human EPS15R (NP_001245304.1).
Conjugation	Un-conjugated
Alternate Names	EPS15R; Eps15R; Epidermal growth factor receptor substrate 15-like 1; Eps15-related protein

Application Instructions

Application table	<table> <tr> <th>Application</th><th>Dilution</th></tr> <tr> <td>WB</td><td>1:500 - 1:2000</td></tr> </table>	Application	Dilution	WB	1:500 - 1:2000
Application	Dilution				
WB	1:500 - 1:2000				
Application Note	* The dilutions indicate recommended starting dilutions and the optimal dilutions or concentrations should be determined by the scientist.				
Positive Control	HeLa				
Observed Size	~ 110 kDa				

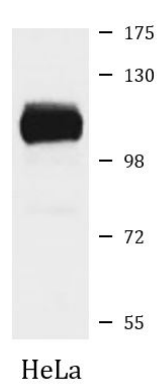
Properties

Form	Liquid
Purification	Affinity purified.
Buffer	PBS (pH 7.3), 0.02% Sodium azide and 50% Glycerol.
Preservative	0.02% Sodium azide
Stabilizer	50% Glycerol
Storage instruction	For continuous use, store undiluted antibody at 2-8°C for up to a week. For long-term storage, aliquot and store at -20°C. Storage in frost free freezers is not recommended. Avoid repeated freeze/thaw cycles. Suggest spin the vial prior to opening. The antibody solution should be gently mixed before use.
Note	For laboratory research only, not for drug, diagnostic or other use.

Bioinformation

Gene Symbol	EPS15L1
Gene Full Name	epidermal growth factor receptor pathway substrate 15-like 1
Function	Seems to be a constitutive component of clathrin-coated pits that is required for receptor-mediated endocytosis. Involved in endocytosis of integrin beta-1 (ITGB1) and transferrin receptor (TFR); internalization of ITGB1 as DAB2-dependent cargo but not TFR seems to require association with DAB2. [UniProt]
Calculated Mw	94 kDa
PTM	Phosphorylated on tyrosine residues by EGFR. [UniProt]
Cellular Localization	Cell membrane; Peripheral membrane protein. Nucleus. Membrane, coated pit. Note=Localized to plasma membrane coated pits. [UniProt]

Images



ARG42844 anti-EPS15R antibody WB image

Western blot: 25 µg of HeLa cell lysate stained with ARG42844 anti-EPS15R antibody at 1:1000 dilution.