

ARG42848 anti-Epsin 2 antibody

Package: 100 µl
Store at: -20°C

Summary

Product Description	Rabbit Polyclonal antibody recognizes Epsin 2
Tested Reactivity	Hu
Tested Application	IHC-P, WB
Host	Rabbit
Clonality	Polyclonal
Isotype	IgG
Target Name	Epsin 2
Species	Human
Immunogen	Recombinant fusion protein corresponding to aa. 120-300 of Human Epsin 2 (NP_683723.2).
Conjugation	Un-conjugated
Alternate Names	EHB21; Epsin-2; EPS-15-interacting protein 2

Application Instructions

Application table	Application	Dilution
	IHC-P	1:50 - 1:200
	WB	1:500 - 1:2000
Application Note	* The dilutions indicate recommended starting dilutions and the optimal dilutions or concentrations should be determined by the scientist.	
Positive Control	LO2	
Observed Size	~ 70 kDa	

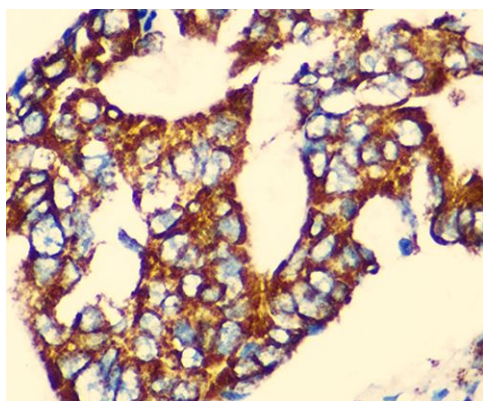
Properties

Form	Liquid
Purification	Affinity purified.
Buffer	PBS (pH 7.3), 0.02% Sodium azide and 50% Glycerol.
Preservative	0.02% Sodium azide
Stabilizer	50% Glycerol
Storage instruction	For continuous use, store undiluted antibody at 2-8°C for up to a week. For long-term storage, aliquot and store at -20°C. Storage in frost free freezers is not recommended. Avoid repeated freeze/thaw cycles. Suggest spin the vial prior to opening. The antibody solution should be gently mixed before use.
Note	For laboratory research only, not for drug, diagnostic or other use.

Bioinformation

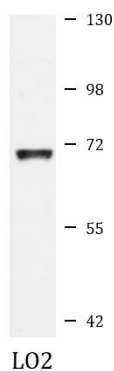
Gene Symbol	EPN2
Gene Full Name	epsin 2
Background	This gene encodes a protein which interacts with clathrin and adaptor-related protein complex 2, alpha 1 subunit. The protein is found in a brain-derived clathrin-coated vesicle fraction and localizes to the peri-Golgi region and the cell periphery. The protein is thought to be involved in clathrin-mediated endocytosis. Alternate splicing of this gene results in multiple transcript variants encoding different isoforms. [provided by RefSeq, Jul 2008]
Function	Plays a role in the formation of clathrin-coated invaginations and endocytosis. [UniProt]
Calculated Mw	68 kDa
PTM	Ubiquitinated. [UniProt]
Cellular Localization	Cytoplasm. Cytoplasmic vesicle, clathrin-coated vesicle. Note=In punctate structures throughout the cell, associated with clathrin-coated vesicles, and particularly concentrated in the region of the Golgi complex. [UniProt]

Images



ARG42848 anti-Epsin 2 antibody IHC-P image

Immunohistochemistry: Paraffin-embedded Human colon carcinoma tissue stained with ARG42848 anti-Epsin 2 antibody at 1:100 dilution.



ARG42848 anti-Epsin 2 antibody WB image

Western blot: 25 µg of LO2 cell lysate stained with ARG42848 anti-Epsin 2 antibody at 1:1000 dilution.