

## ARG42906 anti-INMT / TEMT antibody

Package: 100 µl  
Store at: -20°C

### Summary

Product Description	Rabbit Polyclonal antibody recognizes INMT / TEMT
Tested Reactivity	Hu, Ms
Tested Application	ICC/IF, WB
Host	Rabbit
Clonality	Polyclonal
Isotype	IgG
Target Name	INMT / TEMT
Species	Human
Immunogen	Recombinant fusion protein corresponding to aa. 1-263 of Human INMT / TEMT (NP_006765.4).
Conjugation	Un-conjugated
Alternate Names	Thioether S-methyltransferase; TEMT; Indolamine N-methyltransferase; EC 2.1.1.96; Indolethylamine N-methyltransferase; Aromatic alkylamine N-methyltransferase; Arylamine N-methyltransferase; Amine N-methyltransferase; EC 2.1.1.49

### Application Instructions

Application table	Application	Dilution
	ICC/IF	1:50 - 1:200
	WB	1:500 - 1:2000
Application Note	* The dilutions indicate recommended starting dilutions and the optimal dilutions or concentrations should be determined by the scientist.	
Positive Control	Mouse lung	
Observed Size	~ 30 kDa	

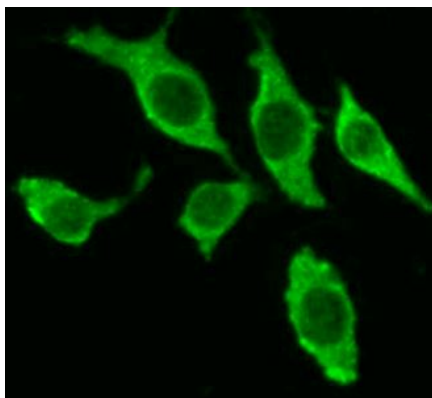
### Properties

Form	Liquid
Purification	Affinity purified.
Buffer	PBS (pH 7.3), 0.02% Sodium azide and 50% Glycerol.
Preservative	0.02% Sodium azide
Stabilizer	50% Glycerol
Storage instruction	For continuous use, store undiluted antibody at 2-8°C for up to a week. For long-term storage, aliquot and store at -20°C. Storage in frost free freezers is not recommended. Avoid repeated freeze/thaw cycles. Suggest spin the vial prior to opening. The antibody solution should be gently mixed before use.

## Bioinformation

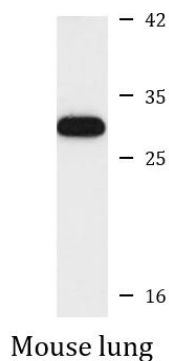
Gene Symbol	INMT
Gene Full Name	indolethylamine N-methyltransferase
Background	N-methylation of endogenous and xenobiotic compounds is a major method by which they are degraded. This gene encodes an enzyme that N-methylates indoles such as tryptamine. Alternative splicing results in multiple transcript variants. Read-through transcription also exists between this gene and the downstream MINDY4 (aka FAM188B) gene. In rodents and other mammals such as cetartiodactyla this gene is in the opposite orientation compared to its orientation in human and other primates and this gene appears to have been lost in carnivora and chiroptera. [provided by RefSeq, Jul 2019]
Function	Functions as thioether S-methyltransferase and is active with a variety of thioethers and the corresponding selenium and tellurium compounds, including 3-methylthiopropionaldehyde, dimethyl selenide, dimethyl telluride, 2-methylthioethylamine, 2-methylthioethanol, methyl-n-propyl sulfide and diethyl sulfide. Plays an important role in the detoxification of selenium compounds (By similarity). Catalyzes the N-methylation of tryptamine and structurally related compounds. [UniProt]
Calculated Mw	29 kDa
Cellular Localization	Cytoplasm. [UniProt]

## Images



ARG42906 anti-INMT / TEMT antibody ICC/IF image

Immunofluorescence: L929 cells stained with ARG42906 anti-INMT / TEMT antibody at 1:100 dilution.



ARG42906 anti-INMT / TEMT antibody WB image

Western blot: 25 µg of Mouse lung lysate stained with ARG42906 anti-INMT / TEMT antibody at 1:3000 dilution.