

## ARG42918 anti-SARS-CoV-2 Spike protein antibody

Package: 100 µl  
Store at: -20°C

### Summary

Product Description	Rabbit Polyclonal antibody recognizes SARS-CoV-2 Spike protein
Tested Reactivity	Virus
Tested Application	ICC/IF, WB
Host	Rabbit
Clonality	Polyclonal
Isotype	IgG
Target Name	SARS-CoV-2 Spike protein
Species	Virus
Immunogen	SARS-CoV-2 Spike protein
Conjugation	Un-conjugated

### Application Instructions

Application table	Application	Dilution
	ICC/IF	1:500 - 1:1000
	WB	1:5000 - 1:18000

**Application Note** \* The dilutions indicate recommended starting dilutions and the optimal dilutions or concentrations should be determined by the scientist.

### Properties

Form	Liquid
Purification	Affinity purification.
Buffer	100 mM Tris Glycine (pH 7.0), 0.025% Proclin 300 and 20% Glycerol.
Preservative	0.025% Proclin 300
Stabilizer	20% Glycerol
Concentration	1.51 mg/ml
Storage instruction	For continuous use, store undiluted antibody at 2-8°C for up to a week. For long-term storage, aliquot and store at -20°C. Storage in frost free freezers is not recommended. Avoid repeated freeze/thaw cycles. Suggest spin the vial prior to opening. The antibody solution should be gently mixed before use.
Note	For laboratory research only, not for drug, diagnostic or other use.

### Bioinformation

Highlight

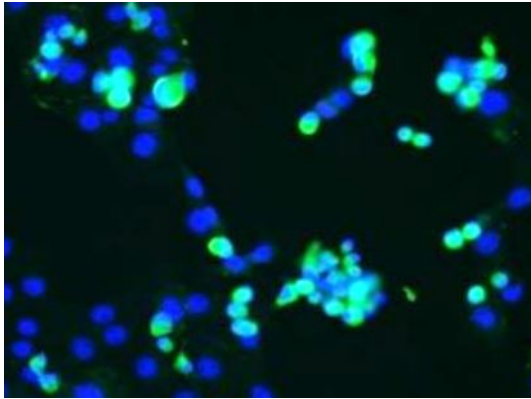
Related products:

[SARS-CoV antibodies](#); [SARS-CoV ELISA Kits](#); [SARS-CoV recombinant proteins](#); [Anti-Rabbit IgG secondary antibodies](#);

Related news:

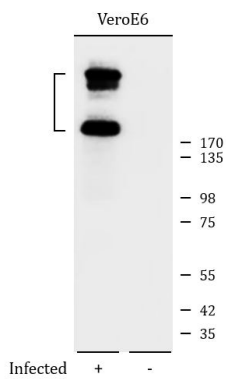
[HMGB1, a biomarker and therapeutic target in COVID-19](#)

Images



ARG42918 anti-SARS-CoV-2 Spike protein antibody ICC/IF image

Immunofluorescence: SARS-CoV-2 infected cells were stained with ARG42918 anti-SARS-CoV-2 Spike protein antibody (green) at 1:500 dilution and 4°C. DAPI (blue) for nuclear staining.



ARG42918 anti-SARS-CoV-2 Spike protein antibody WB image

Western blot: SARS-CoV-2 infected (left) and uninfected (right) VeroE6 cells. 30 ug of cell lysates were stained with ARG42918 anti-SARS-CoV-2 Spike protein antibody at 1:5000 dilution.