

ARG42948 anti-Relaxin 1 antibody

Package: 50 µg
Store at: -20°C

Summary

Product Description	Rabbit Polyclonal antibody recognizes Relaxin 1
Tested Reactivity	Hu
Tested Application	IHC-P
Host	Rabbit
Clonality	Polyclonal
Isotype	IgG
Target Name	Relaxin 1
Species	Human
Immunogen	Synthetic peptide corresponding to a sequence of Human Relaxin 1. (VAAKWKDDVIKLCGRELVRQAICGMSTWS)
Conjugation	Un-conjugated
Alternate Names	bA12D24.3.1; bA12D24.3.2; Prorelaxin H1; RLXH1; H1; H1RLX

Application Instructions

Application table	Application	Dilution
	IHC-P	1:200 - 1:1000
Application Note	IHC-P: Antigen Retrieval: Heat mediation was performed in Citrate buffer (pH 6.0) for 20 min. * The dilutions indicate recommended starting dilutions and the optimal dilutions or concentrations should be determined by the scientist.	

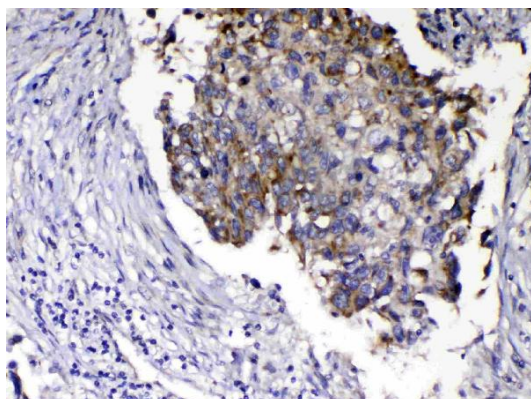
Properties

Form	Liquid
Purification	Affinity purification with immunogen.
Buffer	0.2% Na ₂ HPO ₄ , 0.9% NaCl, 0.05% Sodium azide and 4% Trehalose.
Preservative	0.05% Sodium azide
Stabilizer	4% Trehalose
Concentration	0.5 mg/ml
Storage instruction	For continuous use, store undiluted antibody at 2-8°C for up to a week. For long-term storage, aliquot and store at -20°C or below. Storage in frost free freezers is not recommended. Avoid repeated freeze/thaw cycles. Suggest spin the vial prior to opening. The antibody solution should be gently mixed before use.
Note	For laboratory research only, not for drug, diagnostic or other use.

Bioinformation

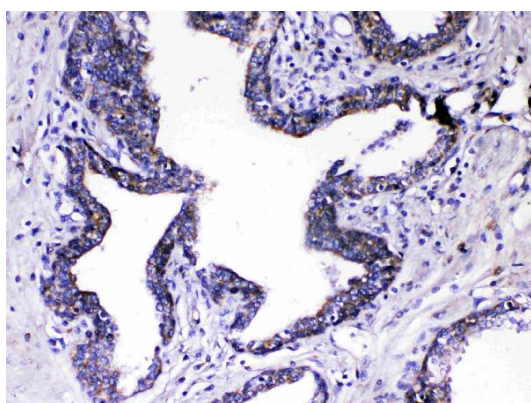
Gene Symbol	RLN1
Gene Full Name	relaxin 1
Background	Relaxins are known endocrine and autocrine/paracrine hormones, belonging to the insulin gene superfamily. In humans there are three non-allelic relaxin genes, RLN1, RLN2 and RLN3, where RLN1 and RLN2 share high sequence homology. The protein encoded by this gene is synthesized as a single-chain polypeptide but the active form consists of an A chain and a B chain linked by disulfide bonds. Relaxin is produced by the ovary, and targets the mammalian reproductive system to ripen the cervix, elongate the pubic symphysis and inhibit uterine contraction. It may have additional roles in enhancing sperm motility, regulating blood pressure, controlling heart rate and releasing oxytocin and vasopressin. [provided by RefSeq, Jan 2013]
Function	Relaxin is an ovarian hormone that acts with estrogen to produce dilatation of the birth canal in many mammals. May be involved in remodeling of connective tissues during pregnancy, promoting growth of pubic ligaments and ripening of the cervix. [UniProt]
Calculated Mw	21 kDa
Cellular Localization	Secreted. [UniProt]

Images



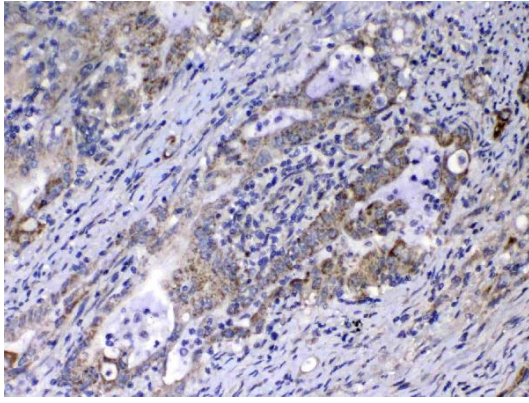
ARG42948 anti-Relaxin 1 antibody IHC-P image

Immunohistochemistry: Paraffin-embedded Human lung cancer tissue. Antigen Retrieval: Heat mediation was performed in Citrate buffer (pH 6.0) for 20 min. The tissue section was blocked with 10% goat serum. The tissue section was then stained with ARG42948 anti-Relaxin 1 antibody at 1 µg/ml dilution, overnight at 4°C.



ARG42948 anti-Relaxin 1 antibody IHC-P image

Immunohistochemistry: Paraffin-embedded Human prostatic cancer tissue. Antigen Retrieval: Heat mediation was performed in Citrate buffer (pH 6.0) for 20 min. The tissue section was blocked with 10% goat serum. The tissue section was then stained with ARG42948 anti-Relaxin 1 antibody at 1 µg/ml dilution, overnight at 4°C.



ARG42948 anti-Relaxin 1 antibody IHC-P image

Immunohistochemistry: Paraffin-embedded Human colon cancer tissue. Antigen Retrieval: Heat mediation was performed in Citrate buffer (pH 6.0) for 20 min. The tissue section was blocked with 10% goat serum. The tissue section was then stained with ARG42948 anti-Relaxin 1 antibody at 1 μ g/ml dilution, overnight at 4°C.