

ARG42949 anti-Presenilin 2 / PS2 antibody

Package: 50 µg
Store at: -20°C

Summary

Product Description	Rabbit Polyclonal antibody recognizes Presenilin 2 / PS2
Tested Reactivity	Hu, Rat
Tested Application	IHC-P, WB
Host	Rabbit
Clonality	Polyclonal
Isotype	IgG
Target Name	Presenilin 2 / PS2
Species	Human
Immunogen	Synthetic peptide corresponding to aa. 39-51 of Human Presenilin 2 / PS2. (EDGENTAQWRSQE)
Conjugation	Un-conjugated
Alternate Names	AD4; AD5; EC 3.4.23.-; STM2; STM-2; AD3LP; Presenilin-2; CMD1V; PS2; AD3L; E5-1; PS-2

Application Instructions

Application table	Application	Dilution
	IHC-P	1:200 - 1:1000
	WB	1:500 - 1:2000
Application Note	* The dilutions indicate recommended starting dilutions and the optimal dilutions or concentrations should be determined by the scientist.	
Observed Size	~ 50 kDa	

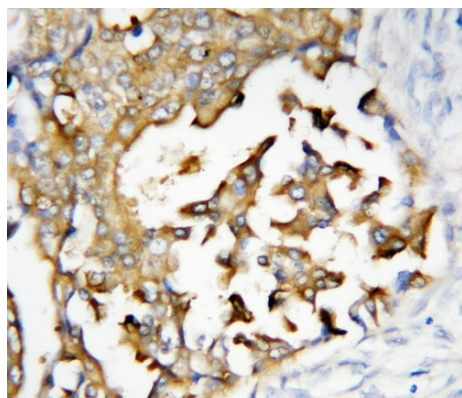
Properties

Form	Liquid
Purification	Affinity purification with immunogen.
Buffer	0.2% Na ₂ HPO ₄ , 0.9% NaCl, 0.05% Thimerosal, 0.05% Sodium azide and 5% BSA.
Preservative	0.05% Thimerosal and 0.05% Sodium azide
Stabilizer	5% BSA
Concentration	0.5 mg/ml
Storage instruction	For continuous use, store undiluted antibody at 2-8°C for up to a week. For long-term storage, aliquot and store at -20°C or below. Storage in frost free freezers is not recommended. Avoid repeated freeze/thaw cycles. Suggest spin the vial prior to opening. The antibody solution should be gently mixed before use.
Note	For laboratory research only, not for drug, diagnostic or other use.

Bioinformation

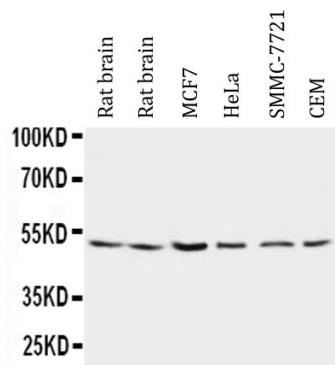
Gene Symbol	PSEN2
Gene Full Name	presenilin 2
Background	Alzheimer's disease (AD) patients with an inherited form of the disease carry mutations in the presenilin proteins (PSEN1 or PSEN2) or the amyloid precursor protein (APP). These disease-linked mutations result in increased production of the longer form of amyloid-beta (main component of amyloid deposits found in AD brains). Presenilins are postulated to regulate APP processing through their effects on gamma-secretase, an enzyme that cleaves APP. Also, it is thought that the presenilins are involved in the cleavage of the Notch receptor such that, they either directly regulate gamma-secretase activity, or themselves act as protease enzymes. Two alternatively spliced transcript variants encoding different isoforms of PSEN2 have been identified. [provided by RefSeq, Jul 2008]
Function	Probable catalytic subunit of the gamma-secretase complex, an endoprotease complex that catalyzes the intramembrane cleavage of integral membrane proteins such as Notch receptors and APP (amyloid-beta precursor protein). Requires the other members of the gamma-secretase complex to have a protease activity. May play a role in intracellular signaling and gene expression or in linking chromatin to the nuclear membrane. May function in the cytoplasmic partitioning of proteins. The holoprotein functions as a calcium-leak channel that allows the passive movement of calcium from endoplasmic reticulum to cytosol and is involved in calcium homeostasis (PubMed:16959576). Is a regulator of mitochondrion-endoplasmic reticulum membrane tethering and modulates calcium ions shuttling between ER and mitochondria (PubMed:21285369). [UniProt]
Calculated Mw	50 kDa
PTM	Heterogeneous proteolytic processing generates N-terminal and C-terminal fragments. Phosphorylated on serine residues. [UniProt]
Cellular Localization	Endoplasmic reticulum membrane; Multi-pass membrane protein. Golgi apparatus membrane; Multi-pass membrane protein. [UniProt]

Images



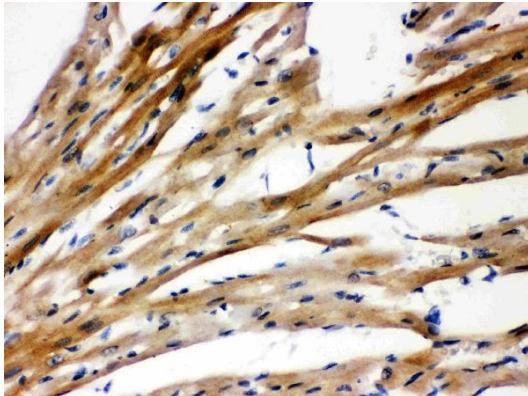
ARG42949 anti-Presenilin 2 / PS2 antibody IHC-P image

Immunohistochemistry: Paraffin-embedded Human mammary cancer tissue stained with ARG42949 anti-Presenilin 2 / PS2 antibody.



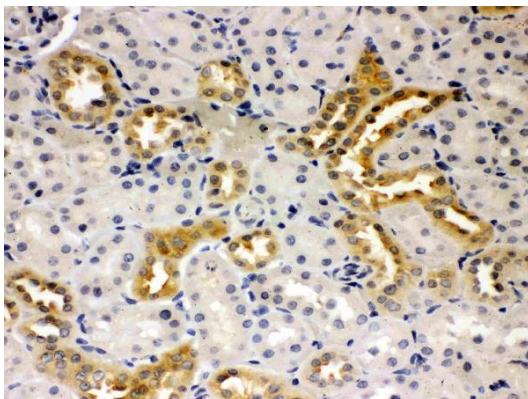
ARG42949 anti-Presenilin 2 / PS2 antibody WB image

Western blot: Rat brain (first two lanes), MCF7, HeLa, SMMC-7721 and CEM cell lysates stained with ARG42949 anti-Presenilin 2 / PS2 antibody.



ARG42949 anti-Presenilin 2 / PS2 antibody IHC-P image

Immunohistochemistry: Paraffin-embedded Rat cardiac muscle tissue stained with ARG42949 anti-Presenilin 2 / PS2 antibody.



ARG42949 anti-Presenilin 2 / PS2 antibody IHC-P image

Immunohistochemistry: Paraffin-embedded Rat kidney tissue stained with ARG42949 anti-Presenilin 2 / PS2 antibody.