

## ARG42951 anti-SSR3 antibody

Package: 50 µg  
Store at: -20°C

### Summary

Product Description	Rabbit Polyclonal antibody recognizes SSR3
Tested Reactivity	Hu, Ms, Rat
Tested Application	ICC/IF, IHC-P, WB
Host	Rabbit
Clonality	Polyclonal
Isotype	IgG
Target Name	SSR3
Species	Human
Immunogen	Synthetic peptide corresponding to aa. 8-23 of Human SSR3. (KQQSEEDLLLQDFSRN)
Conjugation	Un-conjugated
Alternate Names	TRAPG; Translocon-associated protein subunit gamma; Signal sequence receptor subunit gamma; TRAP-gamma; SSR-gamma

### Application Instructions

Application table	Application	Dilution
	ICC/IF	1:200 - 1:1000
	IHC-P	1:200 - 1:1000
	WB	1:500 - 1:2000
Application Note	IHC-P: Antigen Retrieval: Heat mediation was performed in Citrate buffer (pH 6.0) for 20 min. * The dilutions indicate recommended starting dilutions and the optimal dilutions or concentrations should be determined by the scientist.	
Observed Size	~ 21 kDa	

### Properties

Form	Liquid
Purification	Affinity purification with immunogen.
Buffer	0.2% Na <sub>2</sub> HPO <sub>4</sub> , 0.9% NaCl, 0.05% Thimerosal, 0.05% Sodium azide and 5% BSA.
Preservative	0.05% Thimerosal and 0.05% Sodium azide
Stabilizer	5% BSA
Concentration	0.5 mg/ml
Storage instruction	For continuous use, store undiluted antibody at 2-8°C for up to a week. For long-term storage, aliquot and store at -20°C or below. Storage in frost free freezers is not recommended. Avoid repeated freeze/thaw cycles. Suggest spin the vial prior to opening. The antibody solution should be gently mixed

before use.

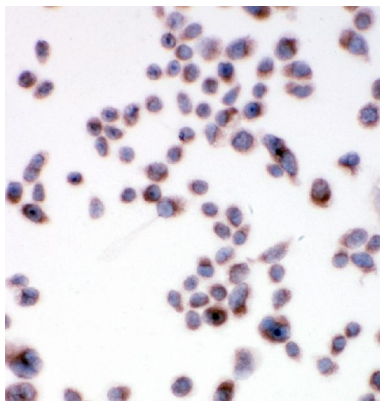
Note

For laboratory research only, not for drug, diagnostic or other use.

## Bioinformation

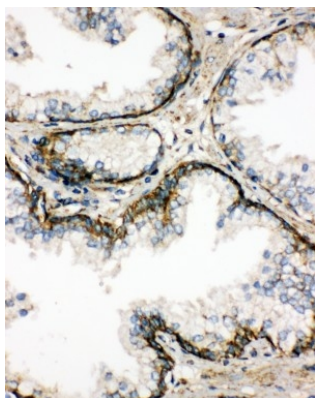
Gene Symbol	SSR3
Gene Full Name	signal sequence receptor, gamma (translocon-associated protein gamma)
Background	The signal sequence receptor (SSR) is a glycosylated endoplasmic reticulum (ER) membrane receptor associated with protein translocation across the ER membrane. The SSR is comprised of four membrane proteins/subunits: alpha, beta, gamma, and delta. The first two are glycosylated subunits and the latter two are non-glycosylated subunits. This gene encodes the gamma subunit, which is predicted to span the membrane four times. [provided by RefSeq, Aug 2010]
Function	TRAP proteins are part of a complex whose function is to bind calcium to the ER membrane and thereby regulate the retention of ER resident proteins. [UniProt]
Calculated Mw	21 kDa
Cellular Localization	Endoplasmic reticulum membrane; Multi-pass membrane protein. [UniProt]

## Images



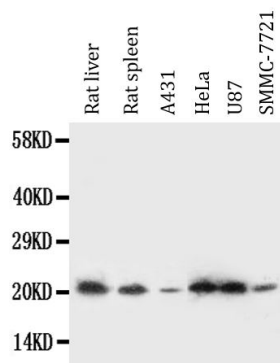
ARG42951 anti-SSR3 antibody ICC image

Immunocytochemistry: HeLa cells were blocked with 10% goat serum and then stained with ARG42951 anti-SSR3 antibody at 1 µg/ml dilution, overnight at 4°C.



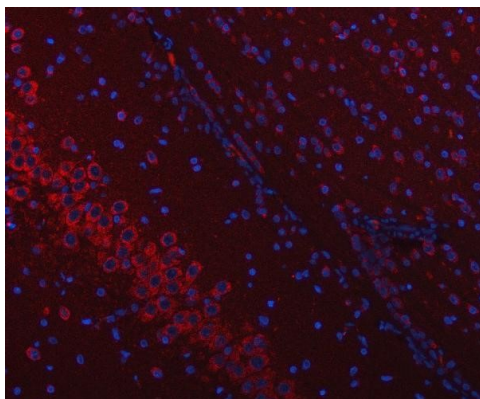
ARG42951 anti-SSR3 antibody IHC-P image

Immunohistochemistry: Paraffin-embedded Human prostatic cancer tissue stained with ARG42951 anti-SSR3 antibody.



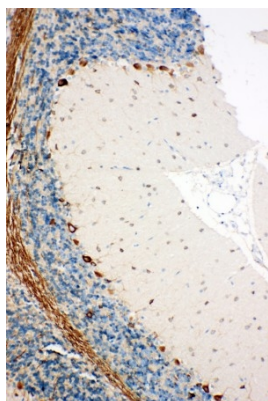
ARG42951 anti-SSR3 antibody WB image

Western blot: 50 µg of Rat liver, 50 µg of Rat spleen, 40 µg of A431, 40 µg of HeLa, 40 µg of U87 and 40 µg of SMMC-7721 whole cell lysates stained with ARG42951 anti-SSR3 antibody at 0.5 µg/ml dilution.



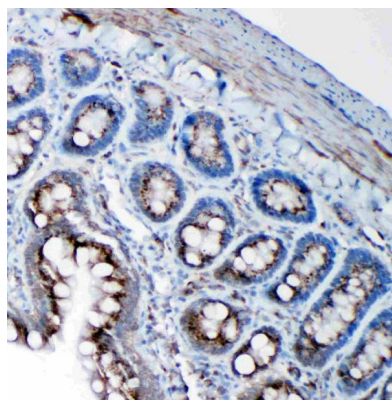
ARG42951 anti-SSR3 antibody IHC-P image

Immunohistochemistry: Mouse brain tissue stained with ARG42951 anti-SSR3 antibody at 2 µg/mL dilution.



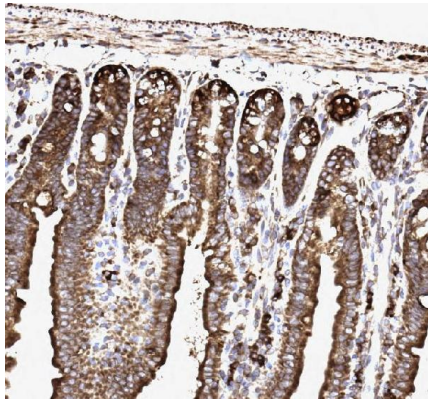
ARG42951 anti-SSR3 antibody IHC-P image

Immunohistochemistry: Paraffin-embedded Rat brain tissue stained with ARG42951 anti-SSR3 antibody.



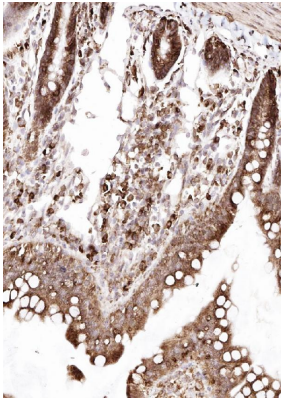
ARG42951 anti-SSR3 antibody IHC-P image

Immunohistochemistry: Paraffin-embedded Rat intestine tissue stained with ARG42951 anti-SSR3 antibody.



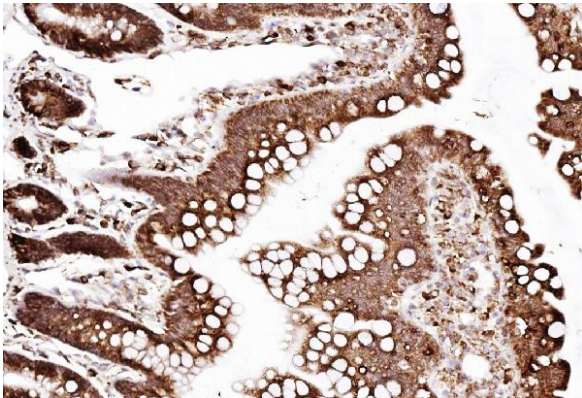
ARG42951 anti-SSR3 antibody IHC-P image

Immunohistochemistry: Paraffin-embedded Mouse intestine tissue. Antigen Retrieval: Heat mediation was performed in Citrate buffer (pH 6.0) for 20 min. The tissue section was blocked with 10% goat serum. The tissue section was then stained with ARG42951 anti-SSR3 antibody at 1 µg/ml dilution, overnight at 4°C.



ARG42951 anti-SSR3 antibody IHC-P image

Immunohistochemistry: Paraffin-embedded Rat intestine tissue. Antigen Retrieval: Heat mediation was performed in Citrate buffer (pH 6.0) for 20 min. The tissue section was blocked with 10% goat serum. The tissue section was then stained with ARG42951 anti-SSR3 antibody at 1 µg/ml dilution, overnight at 4°C.



ARG42951 anti-SSR3 antibody IHC-P image

Immunohistochemistry: Paraffin-embedded Rat intestine tissue. Antigen Retrieval: Heat mediation was performed in Citrate buffer (pH 6.0) for 20 min. The tissue section was blocked with 10% goat serum. The tissue section was then stained with ARG42951 anti-SSR3 antibody at 1 µg/ml dilution, overnight at 4°C.