

## ARG42962 anti-RRBP1 antibody

Package: 50 µg  
Store at: -20°C

### Summary

Product Description	Rabbit Polyclonal antibody recognizes RRBP1
Tested Reactivity	Hu
Tested Application	FACS, ICC/IF, IHC-P, WB
Host	Rabbit
Clonality	Polyclonal
Isotype	IgG
Target Name	RRBP1
Species	Human
Immunogen	Synthetic peptide corresponding to a sequence of Human RRBP1. (EKEKKLTSDLGRAATRLQELLKTTQEQLAREKDTVKKLQEQLEKAED)
Conjugation	Un-conjugated
Alternate Names	Ribosome-binding protein 1; ES130; Ribosome receptor protein; hES; ES/130-related protein; ES/130; 180 kDa ribosome receptor homolog; RRp

### Application Instructions

Application table	Application	Dilution
	FACS	1:150 - 1:500
	ICC/IF	1:200 - 1:1000
	IHC-P	1:200 - 1:1000
	WB	1:500 - 1:2000
Application Note	IHC-P: Antigen Retrieval: Heat mediation was performed in Citrate buffer (pH 6.0) for 20 min. * The dilutions indicate recommended starting dilutions and the optimal dilutions or concentrations should be determined by the scientist.	
Observed Size	~ 190 kDa	

### Properties

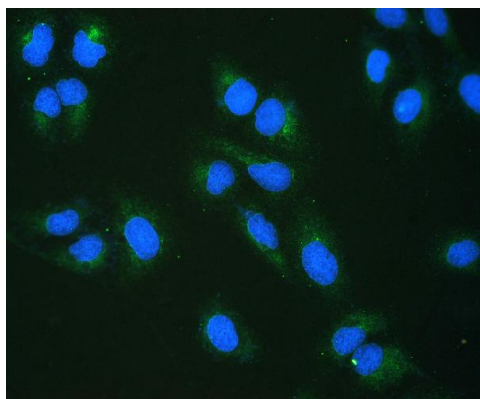
Form	Liquid
Purification	Affinity purification with immunogen.
Buffer	0.2% Na <sub>2</sub> HPO <sub>4</sub> , 0.9% NaCl, 0.05% Sodium azide and 4% Trehalose.
Preservative	0.05% Sodium azide
Stabilizer	4% Trehalose
Concentration	0.5 mg/ml

Storage instruction	For continuous use, store undiluted antibody at 2-8°C for up to a week. For long-term storage, aliquot and store at -20°C or below. Storage in frost free freezers is not recommended. Avoid repeated freeze/thaw cycles. Suggest spin the vial prior to opening. The antibody solution should be gently mixed before use.
Note	For laboratory research only, not for drug, diagnostic or other use.

## Bioinformation

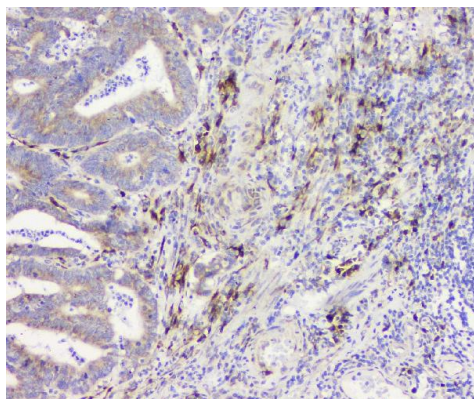
Gene Symbol	RRBP1
Gene Full Name	ribosome binding protein 1
Background	This gene encodes a ribosome-binding protein of the endoplasmic reticulum (ER) membrane. Studies suggest that this gene plays a role in ER proliferation, secretory pathways and secretory cell differentiation, and mediation of ER-microtubule interactions. Alternative splicing has been observed and protein isoforms are characterized by regions of N-terminal decapeptide and C-terminal heptad repeats. Splicing of the tandem repeats results in variations in ribosome-binding affinity and secretory function. The full-length nature of variants which differ in repeat length has not been determined. Pseudogenes of this gene have been identified on chromosomes 3 and 7, and RRBP1 has been excluded as a candidate gene in the cause of Alagille syndrome, the result of a mutation in a nearby gene on chromosome 20p12. [provided by RefSeq, Apr 2012]
Function	Acts as a ribosome receptor and mediates interaction between the ribosome and the endoplasmic reticulum membrane. [UniProt]
Calculated Mw	152 kDa
Cellular Localization	Endoplasmic reticulum membrane; Single-pass type III membrane protein. [UniProt]

## Images



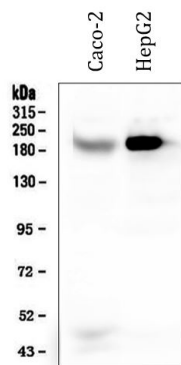
ARG42962 anti-RRBP1 antibody ICC/IF image

Immunofluorescence: U2OS cells were blocked with 10% goat serum and then stained with ARG42962 anti-RRBP1 antibody (green) at 2 µg/ml dilution, overnight at 4°C. DAPI (blue) for nuclear staining.



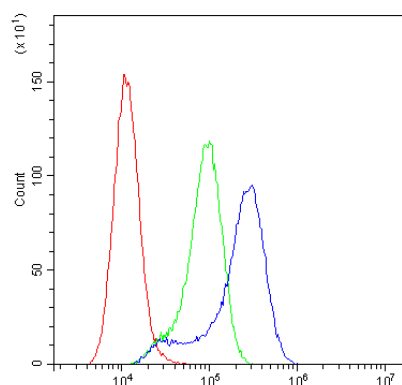
ARG42962 anti-RRBP1 antibody IHC-P image

Immunohistochemistry: Paraffin-embedded Human intestinal cancer tissue. Antigen Retrieval: Heat mediation was performed in Citrate buffer (pH 6.0) for 20 min. The tissue section was blocked with 10% goat serum. The tissue section was then stained with ARG42962 anti-RRBP1 antibody at 1 µg/ml dilution, overnight at 4°C.



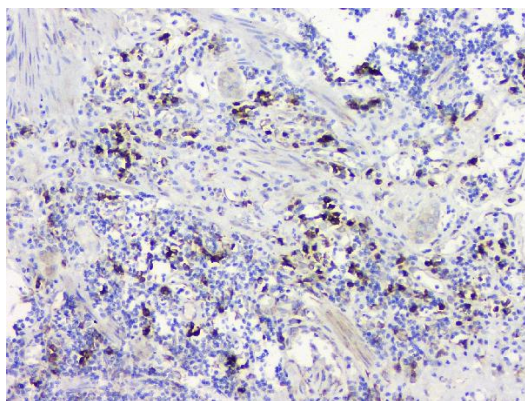
ARG42962 anti-RRBP1 antibody WB image

Western blot: 50  $\mu$ g of sample under reducing conditions. Caco-2 and HepG2 whole cell lysates stained with ARG42962 anti-RRBP1 antibody at 0.5  $\mu$ g/ml dilution, overnight at 4°C.



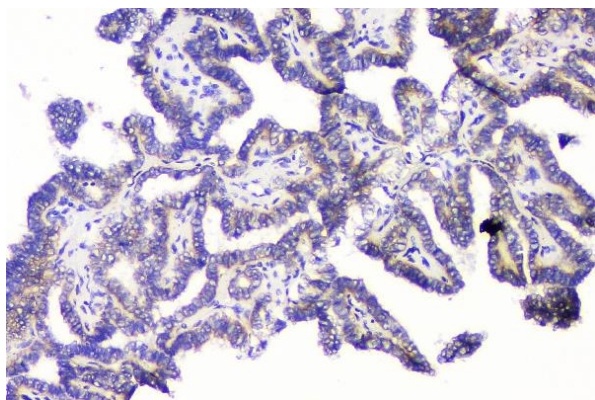
ARG42962 anti-RRBP1 antibody FACS image

Flow Cytometry: A549 cells were blocked with 10% normal goat serum and then stained with ARG42962 anti-RRBP1 antibody (blue) at 1  $\mu$ g/ $10^6$  cells for 30 min at 20°C, followed by incubation with DyLight®488 labelled secondary antibody. Isotype control antibody (green) was Rabbit IgG (1  $\mu$ g/ $10^6$  cells) used under the same conditions. Unlabelled sample (red) was also used as a control.



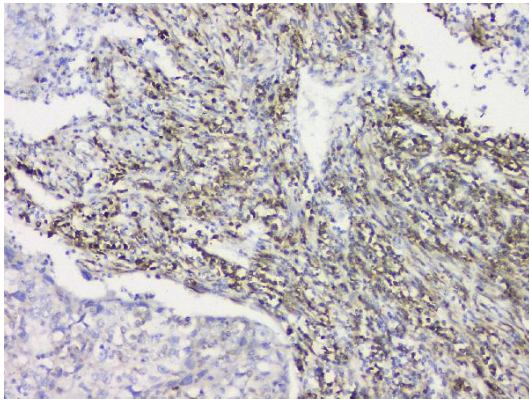
ARG42962 anti-RRBP1 antibody IHC-P image

Immunohistochemistry: Paraffin-embedded Human intestinal cancer tissue. Antigen Retrieval: Heat mediation was performed in Citrate buffer (pH 6.0) for 20 min. The tissue section was blocked with 10% goat serum. The tissue section was then stained with ARG42962 anti-RRBP1 antibody at 1  $\mu$ g/ml dilution, overnight at 4°C.



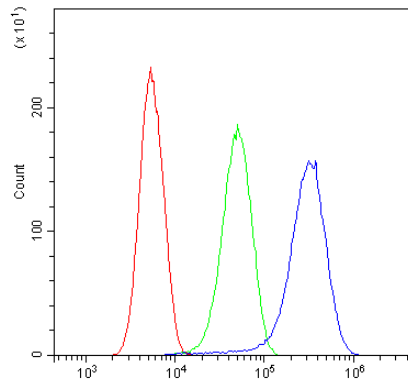
ARG42962 anti-RRBP1 antibody IHC-P image

Immunohistochemistry: Paraffin-embedded Human thyroid cancer tissue. Antigen Retrieval: Heat mediation was performed in Citrate buffer (pH 6.0) for 20 min. The tissue section was blocked with 10% goat serum. The tissue section was then stained with ARG42962 anti-RRBP1 antibody at 1  $\mu$ g/ml dilution, overnight at 4°C.



#### ARG42962 anti-RRBP1 antibody IHC-P image

Immunohistochemistry: Paraffin-embedded Human lung cancer tissue. Antigen Retrieval: Heat mediation was performed in Citrate buffer (pH 6.0) for 20 min. The tissue section was blocked with 10% goat serum. The tissue section was then stained with ARG42962 anti-RRBP1 antibody at 1 µg/ml dilution, overnight at 4°C.



#### ARG42962 anti-RRBP1 antibody FACS image

Flow Cytometry: SiHa cells were blocked with 10% normal goat serum and then stained with ARG42962 anti-RRBP1 antibody (blue) at 1 µg/10<sup>6</sup> cells for 30 min at 20°C, followed by incubation with DyLight<sup>®</sup>488 labelled secondary antibody. Isotype control antibody (green) was Rabbit IgG (1 µg/10<sup>6</sup> cells) used under the same conditions. Unlabelled sample (red) was also used as a control.