

ARG42973 anti-LHX1 / LIM1 antibody

Package: 50 µg
Store at: -20°C

Summary

Product Description	Rabbit Polyclonal antibody recognizes LHX1 / LIM1
Tested Reactivity	Hu, Ms
Tested Application	FACS, IHC-P, WB
Host	Rabbit
Clonality	Polyclonal
Isotype	IgG
Target Name	LHX1 / LIM1
Species	Human
Immunogen	Recombinant protein corresponding to M1-S317 of Human LHX1 / LIM1.
Conjugation	Un-conjugated
Alternate Names	LIM/homeobox protein Lhx1; Homeobox protein Lim-1; hLim-1; LIM1; LIM-1; LIM homeobox protein 1

Application Instructions

Application table	Application	Dilution
	FACS	1:150 - 1:500
	IHC-P	1:200 - 1:1000
	WB	1:500 - 1:2000
Application Note	IHC-P: Antigen Retrieval: Heat mediation was performed in EDTA buffer (pH 8.0). * The dilutions indicate recommended starting dilutions and the optimal dilutions or concentrations should be determined by the scientist.	
Observed Size	~ 44 kDa	

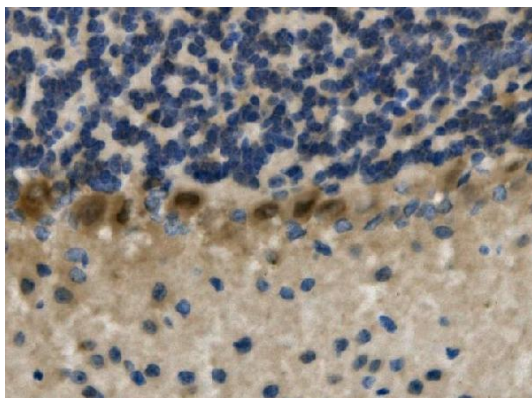
Properties

Form	Liquid
Purification	Affinity purification with immunogen.
Buffer	0.2% Na2HPO4, 0.9% NaCl, 0.05% Sodium azide and 4% Trehalose.
Preservative	0.05% Sodium azide
Stabilizer	4% Trehalose
Concentration	0.5 mg/ml
Storage instruction	For continuous use, store undiluted antibody at 2-8°C for up to a week. For long-term storage, aliquot and store at -20°C or below. Storage in frost free freezers is not recommended. Avoid repeated freeze/thaw cycles. Suggest spin the vial prior to opening. The antibody solution should be gently mixed before use.

Bioinformation

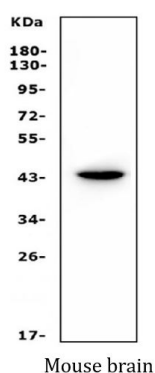
Gene Symbol	LHX1
Gene Full Name	LIM homeobox 1
Background	This gene encodes a member of a large protein family which contains the LIM domain, a unique cysteine-rich zinc-binding domain. The encoded protein is a transcription factor important for the development of the renal and urogenital systems. This gene is a candidate for Mayer-Rokitansky-Kuster-Hauser syndrome, a disorder characterized by anomalies in the female genital tract. [provided by RefSeq, Dec 2010]
Function	Potential transcription factor. May play a role in early mesoderm formation and later in lateral mesoderm differentiation and neurogenesis. [UniProt]
Calculated Mw	45 kDa
Cellular Localization	Nucleus. [UniProt]

Images



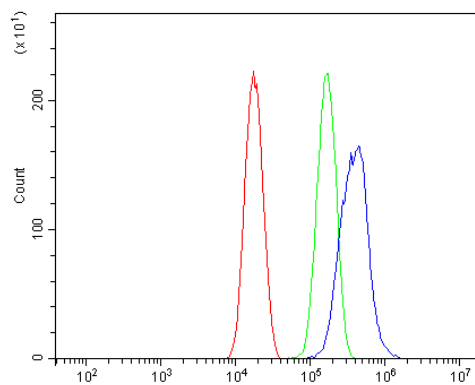
ARG42973 anti-LHX1 / LIM1 antibody IHC-P image

Immunohistochemistry: Paraffin-embedded Mouse brain tissue. Antigen Retrieval: Heat mediation was performed in EDTA buffer (pH 8.0). The tissue section was blocked with 10% goat serum. The tissue section was then stained with ARG42973 anti-LHX1 / LIM1 antibody at 1 µg/ml dilution, overnight at 4°C.



ARG42973 anti-LHX1 / LIM1 antibody WB image

Western blot: 50 µg of sample under reducing conditions. Mouse brain lysate stained with ARG42973 anti-LHX1 / LIM1 antibody at 0.5 µg/ml dilution, overnight at 4°C.



ARG42973 anti-LHX1 / LIM1 antibody FACS image

Flow Cytometry: PC-3 cells were blocked with 10% normal goat serum and then stained with ARG42973 anti-LHX1 / LIM1 antibody (blue) at $1 \mu\text{g}/10^6$ cells for 30 min at 20°C , followed by incubation with DyLight®488 labelled secondary antibody. Isotype control antibody (green) was Rabbit IgG ($1 \mu\text{g}/10^6$ cells) used under the same conditions. Unlabelled sample (red) was also used as a control.