

ARG42982
anti-KCTD9 antibodyPackage: 100 µl
Store at: -20°C**Summary**

Product Description	Rabbit Polyclonal antibody recognizes KCTD9
Tested Reactivity	Hu
Tested Application	ICC/IF, WB
Host	Rabbit
Clonality	Polyclonal
Isotype	IgG
Target Name	KCTD9
Species	Human
Immunogen	Synthetic peptide of Human KCTD9.
Conjugation	Un-conjugated
Alternate Names	BTB/POZ domain-containing protein KCTD9; BTBD27

Application Instructions

Application table	Application	Dilution
	ICC/IF	1:20
	WB	1:2000 - 1:10000
Application Note	* The dilutions indicate recommended starting dilutions and the optimal dilutions or concentrations should be determined by the scientist.	
Positive Control	HeLa	
Observed Size	~ 43 kDa	

Properties

Form	Liquid
Purification	Affinity purified.
Buffer	50 mM Tris-Glycine (pH 7.4), 150 mM NaCl, 0.01% Sodium azide, 40% Glycerol and 0.05% BSA.
Preservative	0.01% Sodium azide
Stabilizer	40% Glycerol and 0.05% BSA
Concentration	Batch dependent
Storage instruction	For continuous use, store undiluted antibody at 2-8°C for up to a week. For long-term storage, aliquot and store at -20°C. Storage in frost free freezers is not recommended. Avoid repeated freeze/thaw cycles. Suggest spin the vial prior to opening. The antibody solution should be gently mixed before use.

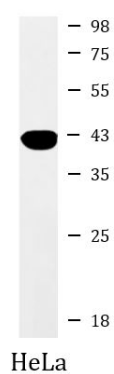
Note

For laboratory research only, not for drug, diagnostic or other use.

Bioinformation

Gene Symbol	KCTD9
Gene Full Name	potassium channel tetramerization domain containing 9
Function	Substrate-specific adapter of a BCR (BTB-CUL3-RBX1) E3 ubiquitin-protein ligase complex, which mediates the ubiquitination of target proteins, leading to their degradation by the proteasome. [UniProt]
Calculated Mw	43 kDa

Images



ARG42982 anti-KCTD9 antibody WB image

Western blot: HeLa cell lysate stained with ARG42982 anti-KCTD9 antibody at 1:1000 dilution.