

ARG42986 anti-PLSCR3 antibody

Package: 100 µl
Store at: -20°C

Summary

Product Description	Rabbit Polyclonal antibody recognizes PLSCR3
Tested Reactivity	Hu, Ms, Rat
Tested Application	WB
Host	Rabbit
Clonality	Polyclonal
Isotype	IgG
Target Name	PLSCR3
Species	Human
Immunogen	Synthetic peptide of Human PLSCR3.
Conjugation	Un-conjugated
Alternate Names	Phospholipid scramblase 3; Ca; PL scramblase 3; 2+

Application Instructions

Application table	<table> <tr> <th>Application</th><th>Dilution</th></tr> <tr> <td>WB</td><td>1:1000 - 1:5000</td></tr> </table>	Application	Dilution	WB	1:1000 - 1:5000
Application	Dilution				
WB	1:1000 - 1:5000				
Application Note	* The dilutions indicate recommended starting dilutions and the optimal dilutions or concentrations should be determined by the scientist.				
Positive Control	K562				
Observed Size	~ 32 kDa				

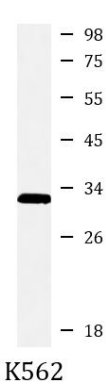
Properties

Form	Liquid
Purification	Affinity purified.
Buffer	50 mM Tris-Glycine (pH 7.4), 150 mM NaCl, 0.01% Sodium azide, 40% Glycerol and 0.05% BSA.
Preservative	0.01% Sodium azide
Stabilizer	40% Glycerol and 0.05% BSA
Concentration	Batch dependent
Storage instruction	For continuous use, store undiluted antibody at 2-8°C for up to a week. For long-term storage, aliquot and store at -20°C. Storage in frost free freezers is not recommended. Avoid repeated freeze/thaw cycles. Suggest spin the vial prior to opening. The antibody solution should be gently mixed before use.
Note	For laboratory research only, not for drug, diagnostic or other use.

Bioinformation

Gene Symbol	PLSCR3
Gene Full Name	phospholipid scramblase 3
Function	May mediate accelerated ATP-independent bidirectional transbilayer migration of phospholipids upon binding calcium ions that results in a loss of phospholipid asymmetry in the plasma membrane. May play a central role in the initiation of fibrin clot formation, in the activation of mast cells and in the recognition of apoptotic and injured cells by the reticuloendothelial system. Seems to play a role in apoptosis, through translocation of cardiolipin from the inner to the outer mitochondrial membrane which promotes BID recruitment and enhances tBid-induced mitochondrial damages. [UniProt]
Calculated Mw	32 kDa
PTM	Phosphorylation at Thr-21 by PKC/PRKCD upon apoptotic stimuli enhances flip-flop activity. [UniProt]
Cellular Localization	Mitochondrion membrane; Single-pass type II membrane protein. [UniProt]

Images



ARG42986 anti-PLSCR3 antibody WB image

Western blot: K562 cell lysate stained with ARG42986 anti-PLSCR3 antibody at 1:1000 dilution.