

ARG43028 anti-KIF5B / Kinesin Heavy Chain antibody

Package: 100 µl
Store at: -20°C

Summary

Product Description	Rabbit Polyclonal antibody recognizes KIF5B / Kinesin Heavy Chain
Tested Reactivity	Hu, Ms, Rat
Tested Application	ICC/IF, IHC-P, WB
Host	Rabbit
Clonality	Polyclonal
Isotype	IgG
Target Name	KIF5B / Kinesin Heavy Chain
Species	Human
Immunogen	Recombinant fusion protein corresponding to aa. 650-770 of Human KIF5B / Kinesin Heavy Chain (NP_004512.1).
Conjugation	Un-conjugated
Alternate Names	HEL-S-61; Kinesin-1 heavy chain; Conventional kinesin heavy chain; KINH; KNS1; Ubiquitous kinesin heavy chain; UKHC; KNS

Application Instructions

Application table	Application	Dilution
	ICC/IF	1:50 - 1:200
	IHC-P	1:50 - 1:200
	WB	1:500 - 1:2000
Application Note	* The dilutions indicate recommended starting dilutions and the optimal dilutions or concentrations should be determined by the scientist.	
Positive Control	HeLa	

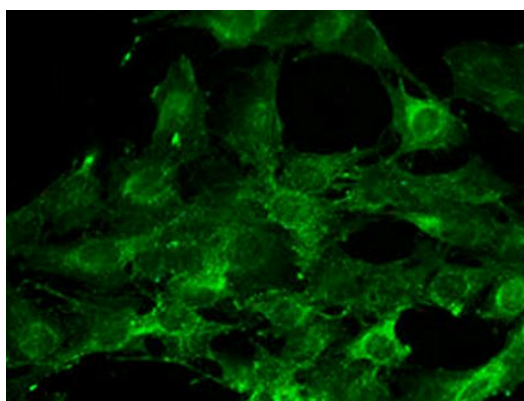
Properties

Form	Liquid
Purification	Affinity purified.
Buffer	PBS (pH 7.3), 0.02% Sodium azide and 50% Glycerol.
Preservative	0.02% Sodium azide
Stabilizer	50% Glycerol
Storage instruction	For continuous use, store undiluted antibody at 2-8°C for up to a week. For long-term storage, aliquot and store at -20°C. Storage in frost free freezers is not recommended. Avoid repeated freeze/thaw cycles. Suggest spin the vial prior to opening. The antibody solution should be gently mixed before use.

Bioinformation

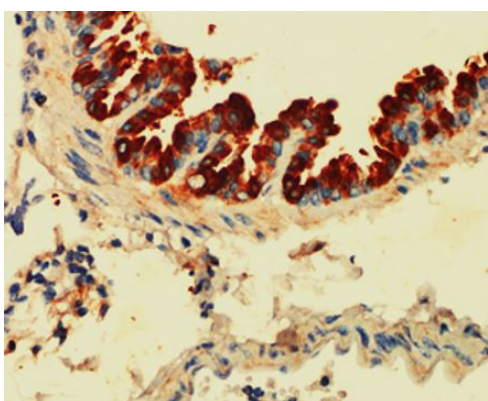
Gene Symbol	KIF5B
Gene Full Name	kinesin family member 5B
Function	Microtubule-dependent motor required for normal distribution of mitochondria and lysosomes. Can induce formation of neurite-like membrane protrusions in non-neuronal cells in a ZFYVE27-dependent manner (By similarity). Regulates centrosome and nuclear positioning during mitotic entry. During the G2 phase of the cell cycle in a BICD2-dependent manner, antagonizes dynein function and drives the separation of nuclei and centrosomes (PubMed:20386726). Required for anterograde axonal transportation of MAPK8IP3/JIP3 which is essential for MAPK8IP3/JIP3 function in axon elongation (By similarity). [UniProt]
Calculated Mw	110 kDa
Cellular Localization	Cytoplasm, cytoskeleton. Note=Uniformly distributed between soma and neurites in hippocampal neurons. [UniProt]

Images



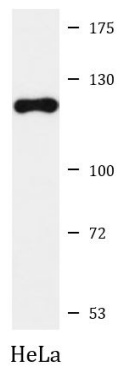
ARG43028 anti-KIF5B / Kinesin Heavy Chain antibody ICC/IF image

Immunofluorescence: C6 cells stained with ARG43028 anti-KIF5B / Kinesin Heavy Chain antibody at 1:100 dilution.



ARG43028 anti-KIF5B / Kinesin Heavy Chain antibody IHC-P image

Immunohistochemistry: Paraffin-embedded Mouse lung tissue stained with ARG43028 anti-KIF5B / Kinesin Heavy Chain antibody at 1:200 dilution.



ARG43028 anti-KIF5B / Kinesin Heavy Chain antibody WB image

Western blot: 25 µg of HeLa cell lysate stained with ARG43028 anti-KIF5B / Kinesin Heavy Chain antibody at 1:1000 dilution.