

## ARG43041 anti-Leupaxin antibody

Package: 50 µg  
Store at: -20°C

### Summary

Product Description	Rabbit Polyclonal antibody recognizes Leupaxin
Tested Reactivity	Hu, Ms, Rat
Tested Application	IHC-P, WB
Host	Rabbit
Clonality	Polyclonal
Isotype	IgG
Target Name	Leupaxin
Species	Human
Immunogen	Synthetic peptide corresponding to aa. 115-129 of Human Leupaxin. (KKHLDPKQDHKASLD)
Conjugation	Un-conjugated
Alternate Names	LDPL; Leupaxin

### Application Instructions

Application table	Application	Dilution
	IHC-P	1:200 - 1:1000
	WB	1:500 - 1:2000
Application Note	IHC-P: Antigen Retrieval: Heat mediation was performed in Citrate buffer (pH 6.0) for 20 min. * The dilutions indicate recommended starting dilutions and the optimal dilutions or concentrations should be determined by the scientist.	

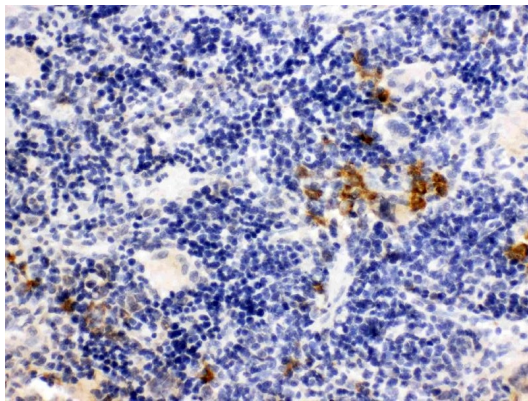
### Properties

Form	Liquid
Purification	Affinity purification with immunogen.
Buffer	0.2% Na <sub>2</sub> HPO <sub>4</sub> , 0.9% NaCl, 0.05% Thimerosal, 0.05% Sodium azide and 5% BSA.
Preservative	0.05% Thimerosal and 0.05% Sodium azide
Stabilizer	5% BSA
Concentration	0.5 mg/ml
Storage instruction	For continuous use, store undiluted antibody at 2-8°C for up to a week. For long-term storage, aliquot and store at -20°C or below. Storage in frost free freezers is not recommended. Avoid repeated freeze/thaw cycles. Suggest spin the vial prior to opening. The antibody solution should be gently mixed before use.
Note	For laboratory research only, not for drug, diagnostic or other use.

Bioinformation

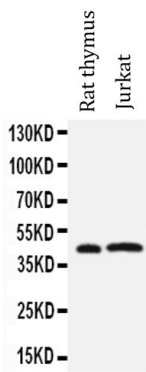
Gene Symbol	LPXN
Gene Full Name	leupaxin
Background	The product encoded by this gene is preferentially expressed in hematopoietic cells and belongs to the paxillin protein family. Similar to other members of this focal-adhesion-associated adaptor-protein family, it has four leucine-rich LD-motifs in the N-terminus and four LIM domains in the C-terminus. It may function in cell type-specific signaling by associating with PYK2, a member of focal adhesion kinase family. As a substrate for a tyrosine kinase in lymphoid cells, this protein may also function in, and be regulated by, tyrosine kinase activity. Alternative splicing results in multiple transcript variants encoding distinct isoforms. [provided by RefSeq, Jan 2009]
Function	Transcriptional coactivator for androgen receptor (AR) and serum response factor (SRF). Contributes to the regulation of cell adhesion, spreading and cell migration and acts as a negative regulator in integrin-mediated cell adhesion events. Suppresses the integrin-induced tyrosine phosphorylation of paxillin (PXN). May play a critical role as an adapter protein in the formation of the adhesion zone in osteoclasts. Negatively regulates B-cell antigen receptor (BCR) signaling. [UniProt]
Calculated Mw	43 kDa
PTM	Phosphorylated on tyrosine residues. Phosphorylation on Tyr-72 is important for its inhibitory function. Bombesin stimulates phosphorylation on Tyr-22, Tyr-62 and Tyr-72. [UniProt]
Cellular Localization	Cytoplasm. Cell junction, focal adhesion. Nucleus. Cytoplasm, perinuclear region. Cell projection, podosome. Cell membrane. Note=Shuttles between the cytoplasm and nucleus. Recruited to the cell membrane following B-cell antigen receptor (BCR) cross-linking in B-cells. Enhanced focal adhesion kinase activity (PTK2/FAK) attenuates its nuclear accumulation and limits its ability to enhance serum response factor (SRF)-dependent gene transcription. [UniProt]

Images



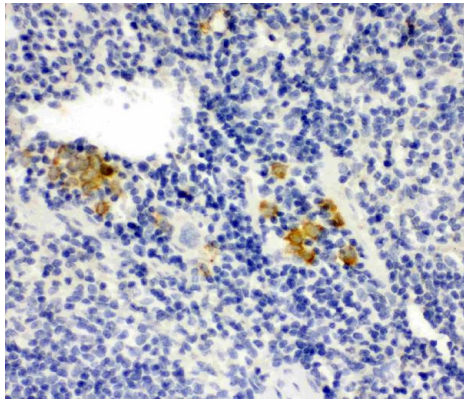
ARG43041 anti-Leupaxin antibody IHC-P image

Immunohistochemistry: Paraffin-embedded Rat spleen tissue stained with ARG43041 anti-Leupaxin antibody.



ARG43041 anti-Leupaxin antibody WB image

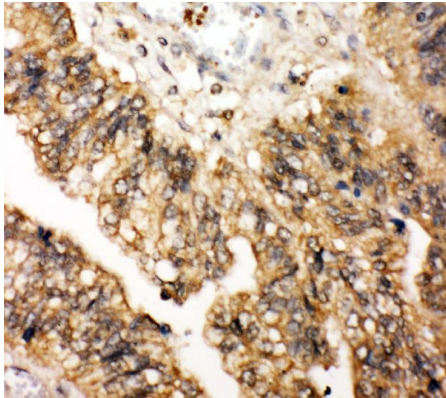
Western blot: Rat thymus and Jurkat cell lysates stained with ARG43041 anti-Leupaxin antibody.



ARG43041 anti-Leupaxin antibody IHC-P image

Immunohistochemistry: Paraffin-embedded Mouse spleen tissue stained with ARG43041 anti-Leupaxin antibody.

---



ARG43041 anti-Leupaxin antibody IHC-P image

Immunohistochemistry: Paraffin-embedded Human intestinal cancer tissue. Antigen Retrieval: Heat mediation was performed in Citrate buffer (pH 6.0) for 20 min. The tissue section was blocked with 10% goat serum. The tissue section was then stained with ARG43041 anti-Leupaxin antibody at 1 µg/ml dilution, overnight at 4°C.

---