

## ARG43047 anti-LRIG1 antibody

Package: 50 µg  
Store at: -20°C

### Summary

Product Description	Rabbit Polyclonal antibody recognizes LRIG1
Tested Reactivity	Hu
Tested Application	IHC-P, WB
Host	Rabbit
Clonality	Polyclonal
Isotype	IgG
Target Name	LRIG1
Species	Mouse
Immunogen	Synthetic peptide corresponding to a sequence of mouse LRIG1. (AKRAFSGLESLEHLNLGENAIRSVQFDAFAKMKNLKELYI)
Conjugation	Un-conjugated
Alternate Names	LIG-1; LRIG1; Leucine-rich repeats and immunoglobulin-like domains protein 1

### Application Instructions

Application table	Application	Dilution
	IHC-P	1:200 - 1:1000
	WB	1:500 - 1:2000
Application Note	IHC-P: Antigen Retrieval: Heat mediation was performed in Citrate buffer (pH 6.0) for 20 min. * The dilutions indicate recommended starting dilutions and the optimal dilutions or concentrations should be determined by the scientist.	

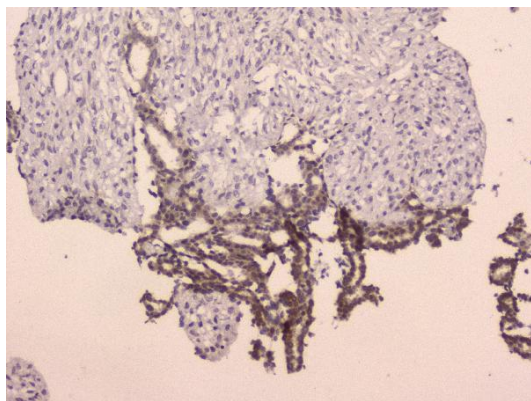
### Properties

Form	Liquid
Purification	Affinity purification with immunogen.
Buffer	0.2% Na <sub>2</sub> HPO <sub>4</sub> , 0.9% NaCl, 0.05% Sodium azide and 4% Trehalose.
Preservative	0.05% Sodium azide
Stabilizer	4% Trehalose
Concentration	0.5 mg/ml
Storage instruction	For continuous use, store undiluted antibody at 2-8°C for up to a week. For long-term storage, aliquot and store at -20°C or below. Storage in frost free freezers is not recommended. Avoid repeated freeze/thaw cycles. Suggest spin the vial prior to opening. The antibody solution should be gently mixed before use.
Note	For laboratory research only, not for drug, diagnostic or other use.

## Bioinformation

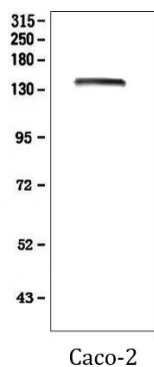
Gene Symbol	LRIG1
Gene Full Name	leucine-rich repeats and immunoglobulin-like domains 1
Function	Acts as a feedback negative regulator of signaling by receptor tyrosine kinases, through a mechanism that involves enhancement of receptor ubiquitination and accelerated intracellular degradation. [UniProt]
Calculated Mw	119 kDa
Cellular Localization	Cell membrane; Single-pass type I membrane protein. [UniProt]

## Images



ARG43047 anti-LRIG1 antibody IHC-P image

Immunohistochemistry: Paraffin-embedded Human mammary cancer tissue. Antigen Retrieval: Heat mediation was performed in Citrate buffer (pH 6.0) for 20 min. The tissue section was blocked with 10% goat serum. The tissue section was then stained with ARG43047 anti-LRIG1 antibody at 2 µg/ml dilution, overnight at 4°C.



ARG43047 anti-LRIG1 antibody WB image

Western blot: 50 µg of sample under reducing conditions. Caco-2 whole cell lysate stained with ARG43047 anti-LRIG1 antibody at 0.5 µg/ml dilution, overnight at 4°C.