

ARG43085 anti-CaMKK alpha antibody

Package: 50 µg
Store at: -20°C

Summary

Product Description	Rabbit Polyclonal antibody recognizes CaMKK alpha
Tested Reactivity	Ms, Rat
Tested Application	IHC-P, WB
Host	Rabbit
Clonality	Polyclonal
Isotype	IgG
Target Name	CaMKK alpha
Species	Mouse
Immunogen	Synthetic peptide corresponding to aa. 10-31 of Mouse CaMKK alpha. (QDPRAELVDRVAAINVAHLEEA)
Conjugation	Un-conjugated
Alternate Names	CaMKK alpha; CAMKKA; Calcium/calmodulin-dependent protein kinase kinase 1; CaM-KK 1; CaM-kinase kinase alpha; CaM-KK alpha; EC 2.7.11.17; CaM-kinase kinase 1; Calcium/calmodulin-dependent protein kinase kinase 1; CaM-kinase IV kinase; CaMKK 1

Application Instructions

Application table	Application	Dilution
	IHC-P	1:200 - 1:1000
	WB	1:500 - 1:2000
Application Note	* The dilutions indicate recommended starting dilutions and the optimal dilutions or concentrations should be determined by the scientist.	
Positive Control	Rat brain and Mouse brain	
Observed Size	~ 56 kDa	

Properties

Form	Liquid
Purification	Affinity purification with immunogen.
Buffer	0.2% Na2HPO4, 0.9% NaCl, 0.05% Thimerosal, 0.05% Sodium azide and 5% BSA.
Preservative	0.05% Thimerosal and 0.05% Sodium azide
Stabilizer	5% BSA
Concentration	0.5 mg/ml
Storage instruction	For continuous use, store undiluted antibody at 2-8°C for up to a week. For long-term storage, aliquot and store at -20°C or below. Storage in frost free freezers is not recommended. Avoid repeated freeze/thaw cycles. Suggest spin the vial prior to opening. The antibody solution should be gently mixed

before use.

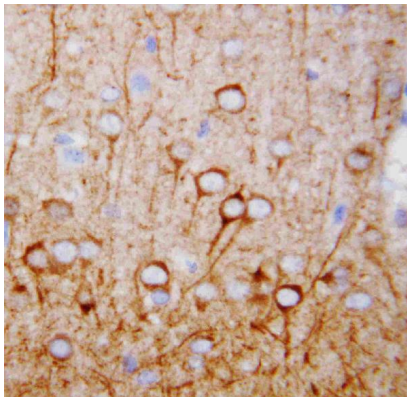
Note

For laboratory research only, not for drug, diagnostic or other use.

Bioinformation

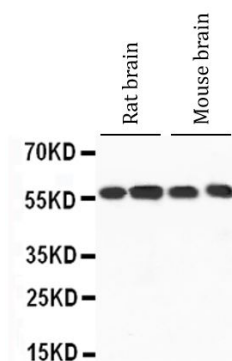
Gene Symbol	CAMKK1
Gene Full Name	calcium/calmodulin-dependent protein kinase kinase 1, alpha
Background	The product of this gene belongs to the Serine/Threonine protein kinase family, and to the Ca(2+)/calmodulin-dependent protein kinase subfamily. This protein plays a role in the calcium/calmodulin-dependent (CaM) kinase cascade. Three transcript variants encoding two distinct isoforms have been identified for this gene. [provided by RefSeq, Jul 2008]
Function	Calcium/calmodulin-dependent protein kinase that belongs to a proposed calcium-triggered signaling cascade involved in a number of cellular processes. Phosphorylates CAMK1, CAMK1D, CAMK1G and CAMK4. Involved in regulating cell apoptosis. Promotes cell survival by phosphorylating AKT1/PKB that inhibits pro-apoptotic BAD/Bcl2-antagonist of cell death. [UniProt]
Calculated Mw	56 kDa
PTM	Appears to be autophosphorylated in a Ca(2+)/calmodulin-dependent manner. Phosphorylated at multiple sites by PRCAKA/PKA. Phosphorylation of Ser-458 is blocked upon binding to Ca(2+)/calmodulin. In vitro, phosphorylated by CAMK1 and CAMK4 (By similarity). [UniProt]
Cellular Localization	Cytoplasm. Nucleus. [UniProt]

Images



ARG43085 anti-CaMKK alpha antibody IHC-P image

Immunohistochemistry: Paraffin-embedded Rat brain tissue stained with ARG43085 anti-CaMKK alpha antibody.



ARG43085 anti-CaMKK alpha antibody WB image

Western blot: Rat brain (Lane 1, 2) and Mouse brain (Lane 3, 4) lysates stained with ARG43085 anti-CaMKK alpha antibody.