

## ARG43097 anti-SLC2A8 / GLUT8 antibody

Package: 50 µg  
Store at: -20°C

### Summary

Product Description	Rabbit Polyclonal antibody recognizes SLC2A8 / GLUT8
Tested Reactivity	Hu, Rat
Predict Reactivity	Ms, Hm
Tested Application	IHC-P, WB
Host	Rabbit
Clonality	Polyclonal
Isotype	IgG
Target Name	SLC2A8 / GLUT8
Species	Mouse
Immunogen	Synthetic peptide corresponding to aa. 461-477 of Mouse SLC2A8 / GLUT8. (ETKGRTEQVTAHFEGR)
Conjugation	Un-conjugated
Alternate Names	GLUTX1; Solute carrier family 2, facilitated glucose transporter member 8; Glucose transporter type X1; GLUT-8; Glucose transporter type 8; GLUT8

### Application Instructions

Application table	Application	Dilution
	IHC-P	1:200 - 1:1000
	WB	1:500 - 1:2000
Application Note	* The dilutions indicate recommended starting dilutions and the optimal dilutions or concentrations should be determined by the scientist.	
Positive Control	Rat testis and Human placenta	
Observed Size	~ 52 kDa	

### Properties

Form	Liquid
Purification	Affinity purification with immunogen.
Buffer	0.2% Na <sub>2</sub> HPO <sub>4</sub> , 0.9% NaCl, 0.05% Thimerosal, 0.05% Sodium azide and 5% BSA.
Preservative	0.05% Thimerosal and 0.05% Sodium azide
Stabilizer	5% BSA
Concentration	0.5 mg/ml
Storage instruction	For continuous use, store undiluted antibody at 2-8°C for up to a week. For long-term storage, aliquot and store at -20°C or below. Storage in frost free freezers is not recommended. Avoid repeated

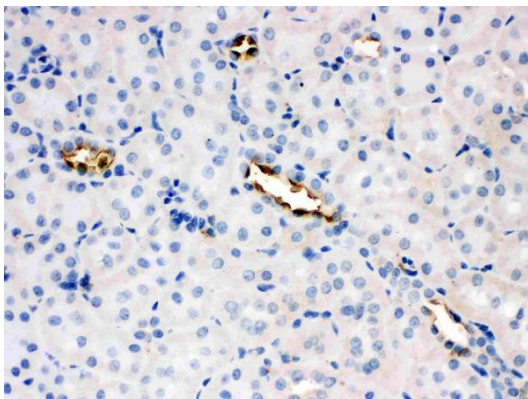
freeze/thaw cycles. Suggest spin the vial prior to opening. The antibody solution should be gently mixed before use.

**Note** For laboratory research only, not for drug, diagnostic or other use.

## Bioinformation

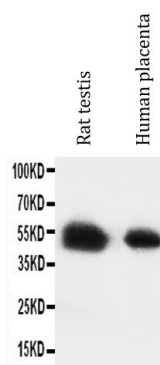
Gene Symbol	SLC2A8
Gene Full Name	solute carrier family 2 (facilitated glucose transporter), member 8
Background	This gene belongs to the solute carrier 2A family, which includes intracellular glucose transporters. Based on sequence comparison, the glucose transporters are grouped into three classes and this gene is a member of class II. The encoded protein, like other members of the family, contains several conserved residues and motifs and 12 transmembrane domains with both amino and carboxyl ends being on the cytosolic side of the membrane. Alternatively spliced transcript variants have been described for this gene. [provided by RefSeq, Nov 2012]
Function	Insulin-regulated facilitative hexose transporter that mediates the transport of glucose and fructose. Also able to mediate the transport of dehydroascorbate. [UniProt]
Calculated Mw	52 kDa
Cellular Localization	Cell membrane; Multi-pass membrane protein. Cytoplasmic vesicle membrane; Multi-pass membrane protein. Note=Principally intracellular. May move between intracellular vesicles and the plasma membrane. The dileucine internalization motif is critical for intracellular sequestration (By similarity). [UniProt]

## Images



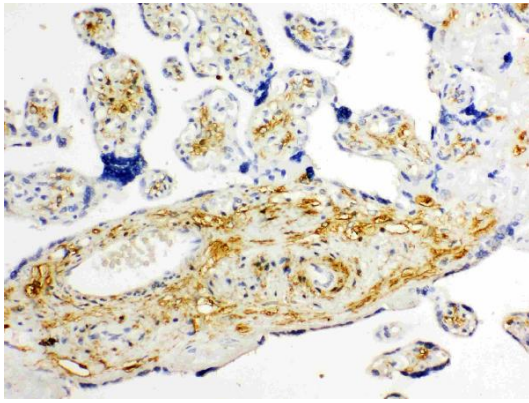
ARG43097 anti-SLC2A8 / GLUT8 antibody IHC-P image

Immunohistochemistry: Paraffin-embedded Rat kidney tissue stained with ARG43097 anti-SLC2A8 / GLUT8 antibody.



ARG43097 anti-SLC2A8 / GLUT8 antibody WB image

Western blot: Rat testis and Human placenta lysates stained with ARG43097 anti-SLC2A8 / GLUT8 antibody.



ARG43097 anti-SLC2A8 / GLUT8 antibody IHC-P image

Immunohistochemistry: Paraffin-embedded Human placenta tissue stained with ARG43097 anti-SLC2A8 / GLUT8 antibody.