

## ARG43165 anti-FRMD6 / Willin antibody

Package: 100 µl  
Store at: -20°C

### Summary

Product Description	Rabbit Polyclonal antibody recognizes FRMD6 / Willin
Tested Reactivity	Hu, Ms, Rat
Tested Application	ICC/IF, IHC-P, WB
Host	Rabbit
Clonality	Polyclonal
Isotype	IgG
Target Name	FRMD6 / Willin
Species	Human
Immunogen	Recombinant fusion protein corresponding to aa. 405-614 of Human FRMD6 / Willin (NP_689543.1).
Conjugation	Un-conjugated
Alternate Names	FERM domain-containing protein 6; Willin; c14_5320; C14orf31; EX1

### Application Instructions

Application table	Application	Dilution
	ICC/IF	1:50 - 1:200
	IHC-P	1:50 - 1:200
	WB	1:1000 - 1:2000
Application Note	* The dilutions indicate recommended starting dilutions and the optimal dilutions or concentrations should be determined by the scientist.	

### Properties

Form	Liquid
Purification	Affinity purified.
Buffer	PBS (pH 7.3), 0.02% Sodium azide and 50% Glycerol.
Preservative	0.02% Sodium azide
Stabilizer	50% Glycerol
Storage instruction	For continuous use, store undiluted antibody at 2-8°C for up to a week. For long-term storage, aliquot and store at -20°C. Storage in frost free freezers is not recommended. Avoid repeated freeze/thaw cycles. Suggest spin the vial prior to opening. The antibody solution should be gently mixed before use.
Note	For laboratory research only, not for drug, diagnostic or other use.

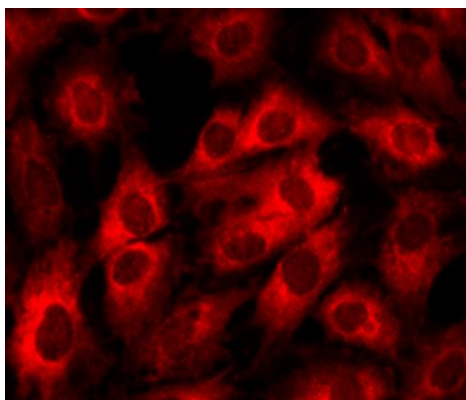
## Bioinformation

---

Gene Symbol	FRMD6
Gene Full Name	FERM domain containing 6
Calculated Mw	72 kDa
Cellular Localization	Cytoplasm. Cell membrane; Peripheral membrane protein; Cytoplasmic side. Note=Can colocalize with actin. [UniProt]

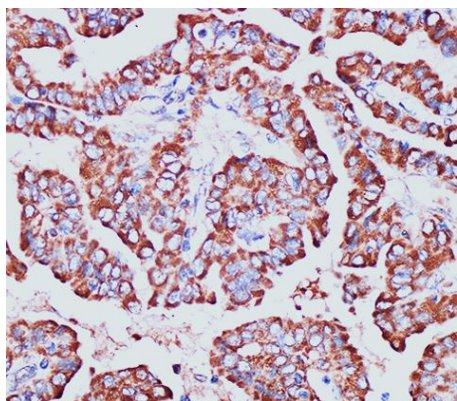
## Images

---



ARG43165 anti-FRMD6 / Willin antibody ICC/IF image

Immunofluorescence: C6 cells stained with ARG43165 anti-FRMD6 / Willin antibody at 1:100 dilution.



ARG43165 anti-FRMD6 / Willin antibody IHC-P image

Immunohistochemistry: Paraffin-embedded Human thyroid cancer tissue stained with ARG43165 anti-FRMD6 / Willin antibody at 1:100 dilution.