

ARG43195 anti-N4BP1 antibody

Package: 50 µl
Store at: -20°C

Summary

Product Description	Rabbit Polyclonal antibody recognizes N4BP1
Tested Reactivity	Hu, Ms, Rat
Tested Application	IHC-P, WB
Host	Rabbit
Clonality	Polyclonal
Isotype	IgG
Target Name	N4BP1
Species	Human
Immunogen	Synthetic peptide corresponding to aa. 391-440 of Human N4BP1.
Conjugation	Un-conjugated
Alternate Names	N4BP1; NEDD4-binding protein 1

Application Instructions

Application table	Application	Dilution
	IHC-P	1:50 - 1:200
	WB	1:500 - 1:1000
Application Note	* The dilutions indicate recommended starting dilutions and the optimal dilutions or concentrations should be determined by the scientist.	
Positive Control	A2780, A549, HEK293, PC12 and AML-12	
Observed Size	~ 125 kDa	

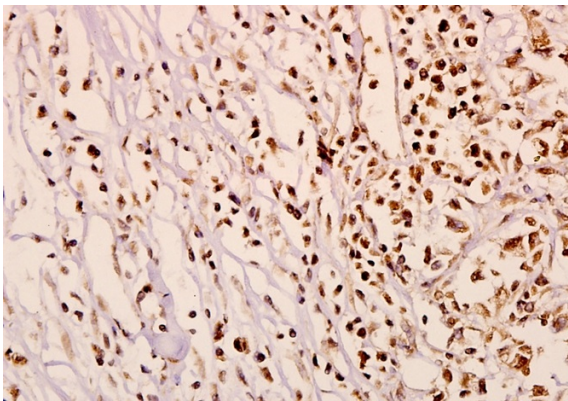
Properties

Form	Liquid
Purification	Affinity purification with immunogen.
Purity	> 95% (by SDS-PAGE)
Buffer	PBS (pH 7.2), 0.02% Sodium azide and 50% Glycerol.
Preservative	0.02% Sodium azide
Stabilizer	50% Glycerol
Concentration	1 mg/ml
Storage instruction	For continuous use, store undiluted antibody at 2-8°C for up to a week. For long-term storage, aliquot and store at -20°C. Storage in frost free freezers is not recommended. Avoid repeated freeze/thaw cycles. Suggest spin the vial prior to opening. The antibody solution should be gently mixed before use.

Bioinformation

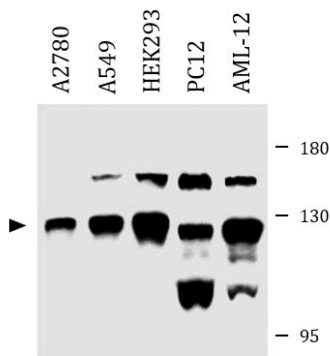
Gene Symbol	N4BP1
Gene Full Name	NEDD4 binding protein 1
Function	Inhibitor of the E3 ubiquitin-protein ligase ITCH. Acts by interacting with the second WW domain of ITCH, leading to compete with ITCH's substrates and impairing ubiquitination of substrates (By similarity). [UniProt]
Calculated Mw	100 kDa
PTM	Monoubiquitinated by NEDD4. Polyubiquitinated, leading to its degradation by the proteasome. Sumoylated with SUMO1, abrogating polyubiquitination and subsequent degradation. Desumoylated by SENP1, leading to accumulation in PML nuclear bodies (By similarity). [UniProt]
Cellular Localization	Nucleus, nucleolus. Nucleus, PML body. Note=Primarily localizes to the nucleolus. Also localizes to the PML nuclear bodies, when desumoylated (By similarity). [UniProt]

Images



ARG43195 anti-N4BP1 antibody IHC-P image

Immunohistochemistry: Paraffin-embedded Human breast carcinoma tissue stained with ARG43195 anti-N4BP1 antibody at 1:50 dilution.



ARG43195 anti-N4BP1 antibody WB image

Western blot: 20 µg of A2780, 20 µg of A549, 20 µg of HEK293, 40 µg of PC12 and 40 µg of AML-12 whole cell lysates stained with ARG43195 anti-N4BP1 antibody at 1:1000 dilution.