

ARG43205 anti-SARS-CoV-2 Envelope protein antibody

Package: 100 µg
Store at: -20°C

Summary

Product Description	Rabbit Polyclonal antibody recognizes SARS-CoV-2 Envelope protein
Tested Reactivity	Virus
Tested Application	ELISA, IHC-P, WB
Specificity	This antibody can detect 2 ng of free peptide at 1 µg/ml in ELISA. It can detect SARS-CoV-2 Envelope recombinant protein by ELISA and WB.
Host	Rabbit
Clonality	Polyclonal
Isotype	IgG
Target Name	SARS-CoV-2 Envelope protein
Species	Virus
Immunogen	A 14-amino acid peptide within the last 50 amino acids of SARS-CoV-2 Envelope protein.
Conjugation	Un-conjugated

Application Instructions

Application table	Application	Dilution
	ELISA	Assay-dependent
	IHC-P	0.5 µg/ml
	WB	1 - 2 µg/ml
Application Note	Direct ELISA: Detection range: 1 - 3000 ng/ml (recombinant protein); 0.3 - 1000 ng/ml (immunogen peptide). IHC-P: Antigen Retrieval: Heat mediation was performed in Citrate buffer (pH 6.0). * The dilutions indicate recommended starting dilutions and the optimal dilutions or concentrations should be determined by the scientist.	

Properties

Form	Liquid
Purification	Affinity purification with immunogen.
Buffer	PBS and 0.02% Sodium azide.
Preservative	0.02% Sodium azide
Concentration	1 mg/ml
Storage instruction	For continuous use, store undiluted antibody at 2-8°C for up to a week. For long-term storage, aliquot and store at -20°C or below. Storage in frost free freezers is not recommended. Avoid repeated freeze/thaw cycles. Suggest spin the vial prior to opening. The antibody solution should be gently mixed before use.

Bioinformation

Highlight

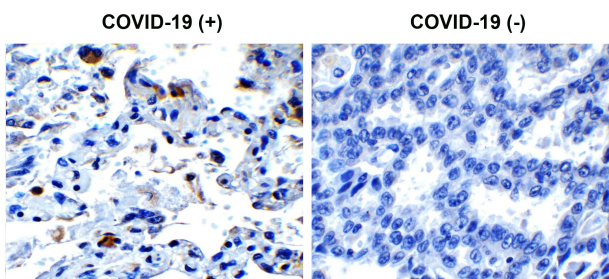
Related products:

[SARS-CoV antibodies](#); [SARS-CoV ELISA Kits](#); [SARS-CoV recombinant proteins](#); [Anti-Rabbit IgG secondary antibodies](#);

Related news:

[HMGB1, a biomarker and therapeutic target in COVID-19](#)

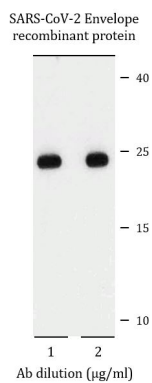
Images



ARG43205 anti-SARS-CoV-2 Envelope protein antibody IHC-P image

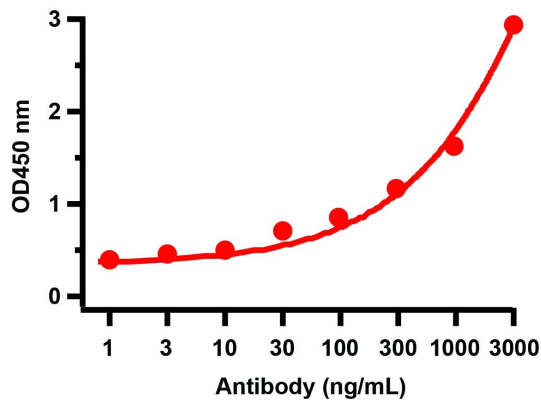
Immunohistochemistry: Paraffin-embedded COVID-19 patient lung tissue. Tissue was fixed with formaldehyde and blocked with 10% serum for 1 hour at RT. Antigen Retrieval: Heat mediation was performed in Citrate buffer (pH 6.0). The tissue section was stained with ARG43205 anti-SARS-CoV-2 Envelope protein antibody at 0.5 ug/ml dilution, overnight at 4°C. Counter stained with Hematoxylin.

Strong signal of SARS-COV-2 envelope protein was observed in macrophage of COVID-19 patient lung, but not in non-COVID-19 patient lung.



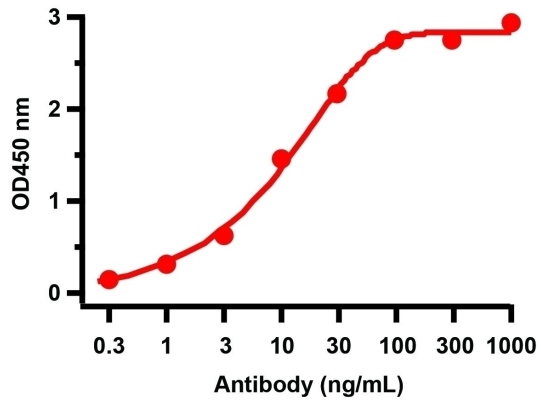
ARG43205 anti-SARS-CoV-2 Envelope protein antibody WB image

Western blot: 50 ng of SARS-CoV-2 Envelope recombinant protein (N-BBP-6xHis tagged) stained with ARG43205 anti-SARS-CoV-2 Envelope protein antibody for 1 hour incubation at RT in 5% NFDN/TBST, at 1 µg/ml (left) or 2 µg/ml (right) dilution.



ARG43205 anti-SARS-CoV-2 Envelope protein antibody ELISA image

Direct ELISA: SARS-CoV-2 Envelope recombinant protein as coating antigen. Samples were stained with ARG43205 anti-SARS-CoV-2 Envelope protein antibody. Detection range: 1 - 3000 ng/ml.



ARG43205 anti-SARS-CoV-2 Envelope protein antibody ELISA image

Direct ELISA: An immunogen peptide as coating antigen. Samples were stained with ARG43205 anti-SARS-CoV-2 Envelope protein antibody. Detection range: 0.3 - 1000 ng/ml.