

ARG43233 anti-FGB / Fibrinogen beta chain antibody [6D12]

Package: 50 µg
Store at: -20°C

Summary

Product Description	Mouse Monoclonal antibody [6D12] recognizes FGB / Fibrinogen beta chain
Tested Reactivity	Hu
Tested Application	IHC-P, WB
Host	Mouse
Clonality	Monoclonal
Clone	6D12
Isotype	IgG2b
Target Name	FGB / Fibrinogen beta chain
Species	Human
Immunogen	Synthetic peptide corresponding to aa. 193-225 of Human FGB / Fibrinogen beta chain. (TNLRVLRSLNLRSKIQLKLESDVSAQMEYCRT)
Conjugation	Un-conjugated
Alternate Names	Fibrinogen beta chain; HEL-S-78p

Application Instructions

Application table	Application	Dilution
	IHC-P	1:200 - 1:1000
	WB	1:500 - 1:2000
Application Note	IHC-P: Antigen Retrieval: Heat mediation was performed in EDTA buffer (pH 8.0). * The dilutions indicate recommended starting dilutions and the optimal dilutions or concentrations should be determined by the scientist.	
Positive Control	HepG2	
Observed Size	~ 55 kDa	

Properties

Form	Liquid
Purification	Affinity purification with immunogen.
Buffer	0.2% Na ₂ HPO ₄ , 0.9% NaCl and 4% Trehalose.
Stabilizer	4% Trehalose
Concentration	0.5 mg/ml
Storage instruction	For continuous use, store undiluted antibody at 2-8°C for up to a week. For long-term storage, aliquot and store at -20°C or below. Storage in frost free freezers is not recommended. Avoid repeated freeze/thaw cycles. Suggest spin the vial prior to opening. The antibody solution should be gently mixed

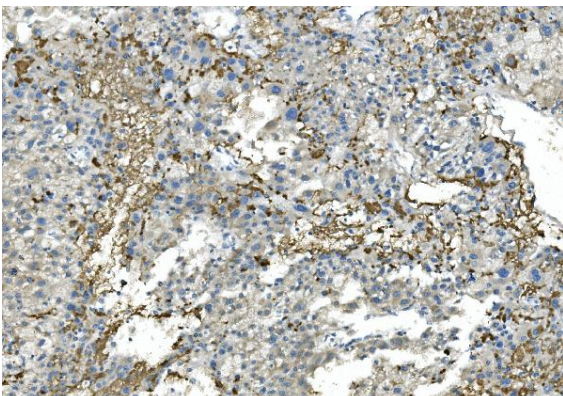
before use.

Note For laboratory research only, not for drug, diagnostic or other use.

Bioinformation

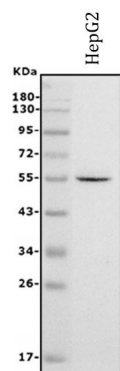
Gene Symbol	FGB
Gene Full Name	fibrinogen beta chain
Background	The protein encoded by this gene is the beta component of fibrinogen, a blood-borne glycoprotein comprised of three pairs of nonidentical polypeptide chains. Following vascular injury, fibrinogen is cleaved by thrombin to form fibrin which is the most abundant component of blood clots. In addition, various cleavage products of fibrinogen and fibrin regulate cell adhesion and spreading, display vasoconstrictor and chemotactic activities, and are mitogens for several cell types. Mutations in this gene lead to several disorders, including afibrinogenemia, dysfibrinogenemia, hypodysfibrinogenemia and thrombotic tendency. Alternatively spliced transcript variants encoding different isoforms have been found for this gene. [provided by RefSeq, Jun 2014]
Function	Cleaved by the protease thrombin to yield monomers which, together with fibrinogen alpha (FGA) and fibrinogen gamma (FGG), polymerize to form an insoluble fibrin matrix. Fibrin has a major function in hemostasis as one of the primary components of blood clots. In addition, functions during the early stages of wound repair to stabilize the lesion and guide cell migration during re-epithelialization. Was originally thought to be essential for platelet aggregation, based on in vitro studies using anticoagulated blood. However subsequent studies have shown that it is not absolutely required for thrombus formation in vivo. Enhances expression of SELP in activated platelets. Maternal fibrinogen is essential for successful pregnancy. Fibrin deposition is also associated with infection, where it protects against IFNG-mediated hemorrhage. May also facilitate the antibacterial immune response via both innate and T-cell mediated pathways. [UniProt]
Calculated Mw	56 kDa
PTM	Conversion of fibrinogen to fibrin is triggered by thrombin, which cleaves fibrinopeptides A and B from alpha and beta chains, and thus exposes the N-terminal polymerization sites responsible for the formation of the soft clot. The soft clot is converted into the hard clot by factor XIIIa which catalyzes the epsilon-(gamma-glutamyl)lysine cross-linking between gamma chains (stronger) and between alpha chains (weaker) of different monomers. [UniProt]
Cellular Localization	Secreted. [UniProt]

Images



ARG43233 anti-FGB / Fibrinogen beta chain antibody [6D12] IHC-P image

Immunohistochemistry: Paraffin-embedded Human liver cancer tissue. Antigen Retrieval: Heat mediation was performed in EDTA buffer (pH 8.0). The tissue section was blocked with 10% goat serum. The tissue section was then stained with ARG43233 anti-FGB / Fibrinogen beta chain antibody [6D12] at 2 µg/ml dilution, overnight at 4°C.



ARG43233 anti-FGB / Fibrinogen beta chain antibody [6D12] WB image

Western blot: 50 µg of sample under reducing conditions. HepG2 whole cell lysates stained with ARG43233 anti-FGB / Fibrinogen beta chain antibody [6D12] at 0.5 µg/ml dilution, overnight at 4°C.