

ARG43236 anti-NLRP10 / NALP10 antibody

Package: 50 µg
Store at: -20°C

Summary

| | |
|---------------------|---|
| Product Description | Rabbit Polyclonal antibody recognizes NLRP10 / NALP10 |
| Tested Reactivity | Hu |
| Tested Application | IHC-P, WB |
| Host | Rabbit |
| Clonality | Polyclonal |
| Isotype | IgG |
| Target Name | NLRP10 / NALP10 |
| Species | Human |
| Immunogen | A 14-amino acid synthetic peptide within the first 50 amino acids of Human NLRP10 / NALP10. |
| Conjugation | Un-conjugated |
| Alternate Names | CLR11.1; PAN5; Nucleotide-binding oligomerization domain protein 8; NALP10; PYNOD; NACHT, LRR and PYD domains-containing protein 10; NOD8 |

Application Instructions

| Application table | Application | Dilution |
|-------------------|--|---------------|
| | IHC-P | 10 - 20 µg/ml |
| | WB | 1 µg/ml |
| Application Note | * The dilutions indicate recommended starting dilutions and the optimal dilutions or concentrations should be determined by the scientist. | |
| Observed Size | ~ 72 kDa | |

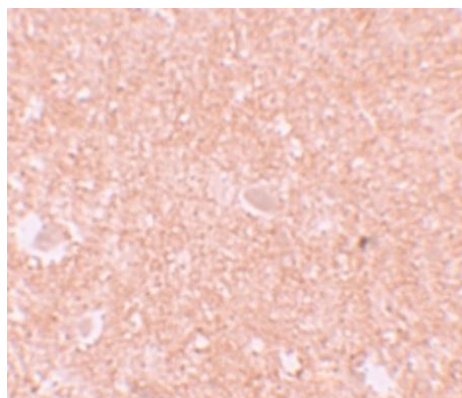
Properties

| | |
|---------------------|--|
| Form | Liquid |
| Purification | Affinity purification with immunogen. |
| Buffer | PBS and 0.02% Sodium azide. |
| Preservative | 0.02% Sodium azide |
| Concentration | 1 mg/ml |
| Storage instruction | For continuous use, store undiluted antibody at 2-8°C for up to a week. For long-term storage, aliquot and store at -20°C or below. Storage in frost free freezers is not recommended. Avoid repeated freeze/thaw cycles. Suggest spin the vial prior to opening. The antibody solution should be gently mixed before use. |
| Note | For laboratory research only, not for drug, diagnostic or other use. |

Bioinformation

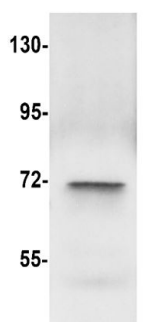
| | |
|-----------------------|--|
| Gene Symbol | NLRP10 |
| Gene Full Name | NLR family, pyrin domain containing 10 |
| Background | Members of the NALP protein family typically contain a NACHT domain, a NACHT-associated domain (NAD), a C-terminal leucine-rich repeat (LRR) region, and an N-terminal pyrin domain (PYD). The protein encoded by this gene belongs to the NALP protein family despite lacking the LRR region. This protein likely plays a regulatory role in the innate immune system. The protein belongs to the signal-induced multiprotein complex, the inflammasome, that activates the pro-inflammatory caspases, caspase-1 and caspase-5. Other experiments indicate that this gene acts as a multifunctional negative regulator of inflammation and apoptosis. [provided by RefSeq, Jul 2008] |
| Function | Inhibits autoprocessing of CASP1, CASP1-dependent IL1B secretion, PYCARD aggregation and PYCARD-mediated apoptosis but not apoptosis induced by FAS or BID (PubMed:15096476). Displays anti-inflammatory activity (PubMed:20393137). Required for immunity against C.albicans infection (By similarity). Involved in the innate immune response by contributing to proinflammatory cytokine release in response to invasive bacterial infection (PubMed:22672233). Contributes to T-cell-mediated inflammatory responses in the skin (By similarity). Plays a role in protection against periodontitis through its involvement in induction of IL1A via ERK activation in oral epithelial cells infected with periodontal pathogens (PubMed:28766990). Exhibits both ATPase and GTPase activities (PubMed:23861819). [UniProt] |
| Calculated Mw | 75 kDa |
| Cellular Localization | Cytoplasm. Cell membrane; Peripheral membrane protein. Note=Cytoplasmic protein which is recruited to the cell membrane by NOD1 following invasive bacterial infection. [UniProt] |

Images



ARG43236 anti-NLRP10 / NALP10 antibody IHC-P image

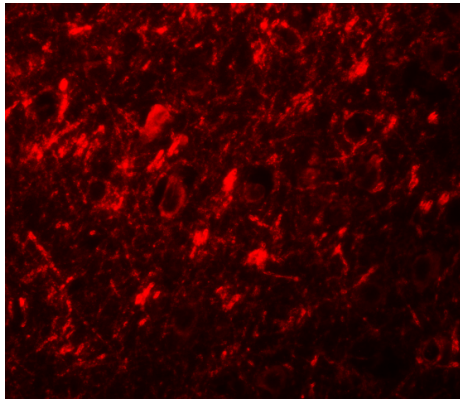
Immunohistochemistry: Paraffin-embedded Human brain tissue stained with ARG43236 anti-NLRP10 / NALP10 antibody at 10 µg/ml dilution.



Human brain

ARG43236 anti-NLRP10 / NALP10 antibody WB image

Western blot: Human brain lysate stained with ARG43236 anti-NLRP10 / NALP10 antibody at 1 µg/ml dilution.



ARG43236 anti-NLRP10 / NALP10 antibody IHC-P image

Immunohistochemistry: Paraffin-embedded Human brain tissue stained with ARG43236 anti-NLRP10 / NALP10 antibody at 20 µg/ml dilution.