

## ARG43239 anti-KIF21B antibody

Package: 100 µl  
Store at: -20°C

### Summary

Product Description	Rabbit Polyclonal antibody recognizes KIF21B
Tested Reactivity	Hu, Ms
Predict Reactivity	Rat
Tested Application	IHC-P, WB
Host	Rabbit
Clonality	Polyclonal
Isotype	IgG
Target Name	KIF21B
Species	Human
Immunogen	Synthetic peptide of Human KIF21B.
Conjugation	Un-conjugated
Alternate Names	Kinesin-like protein KIF21B

### Application Instructions

Application table	Application	Dilution
	IHC-P	1:30 - 1:150
	WB	1:500 - 1:2000
Application Note	* The dilutions indicate recommended starting dilutions and the optimal dilutions or concentrations should be determined by the scientist.	
Positive Control	WB: Mouse brain IHC-P: Human colorectal cancer tissue	

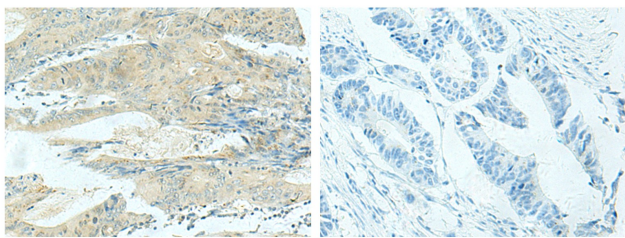
### Properties

Form	Liquid
Purification	Affinity purification with immunogen.
Buffer	PBS (pH 7.4), 0.05% Sodium azide and 40% Glycerol.
Preservative	0.05% Sodium azide
Stabilizer	40% Glycerol
Storage instruction	For continuous use, store undiluted antibody at 2-8°C for up to a week. For long-term storage, aliquot and store at -20°C. Storage in frost free freezers is not recommended. Avoid repeated freeze/thaw cycles. Suggest spin the vial prior to opening. The antibody solution should be gently mixed before use.
Note	For laboratory research only, not for drug, diagnostic or other use.

Bioinformation

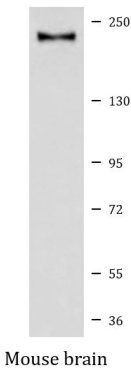
Gene Symbol	KIF21B
Gene Full Name	kinesin family member 21B
Background	This gene encodes a member of the kinesin superfamily. Kinesins are ATP-dependent microtubule-based motor proteins that are involved in the intracellular transport of membranous organelles. Single nucleotide polymorphisms in this gene are associated with inflammatory bowel disease and multiple sclerosis. Alternatively spliced transcript variants encoding multiple isoforms have been observed for this gene. [provided by RefSeq, Nov 2011]
Function	Plus-end directed microtubule-dependent motor protein which displays processive activity. Is involved in regulation of microtubule dynamics, synapse function and neuronal morphology, including dendritic tree branching and spine formation. Plays a role in learning and memory. Involved in delivery of gamma-aminobutyric acid (GABA(A)) receptor to cell surface. [UniProt]
Calculated Mw	183 kDa
Cellular Localization	Cytoplasm, cytoskeleton. Cell projection, dendrite. Cell projection, growth cone. Cell projection, axon. Cytoplasmic vesicle. [UniProt]

Images



ARG43239 anti-KIF21B antibody IHC-P image

Immunohistochemistry: Paraffin-embedded Human colorectal cancer tissue stained with ARG43239 anti-KIF21B antibody (left) at 1:40 dilution, or the same antibody pre-incubated with synthetic peptide (right). (Original magnification: X200).



ARG43239 anti-KIF21B antibody WB image

Western blot: 40 µg of Mouse brain lysate stained with ARG43239 anti-KIF21B antibody at 1:1000 dilution.