

ARG43276 anti-ARL8B antibody

Package: 50 µg
Store at: -20°C

Summary

Product Description	Rabbit Polyclonal antibody recognizes ARL8B
Tested Reactivity	Hu, Ms
Tested Application	IHC-P, WB
Host	Rabbit
Clonality	Polyclonal
Isotype	IgG
Target Name	ARL8B
Species	Human
Immunogen	Recombinant protein corresponding to aa. 20-186 of Human ARL8B.
Conjugation	Un-conjugated
Alternate Names	Novel small G protein indispensable for equal chromosome segregation 1; ARL10C; ADP-ribosylation factor-like protein 8B; Gie1; ADP-ribosylation factor-like protein 10C

Application Instructions

Application table	Application	Dilution
	IHC-P	1:100
	WB	4 µg/ml
Application Note	* The dilutions indicate recommended starting dilutions and the optimal dilutions or concentrations should be determined by the scientist.	
Positive Control	Mouse brain, NIH/3T3 and Jurkat	
Observed Size	~ 22 kDa	

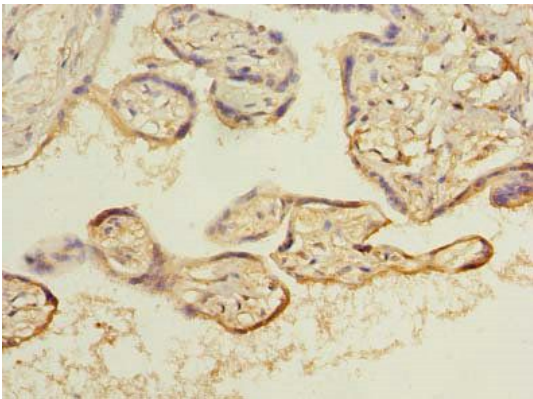
Properties

Form	Liquid
Purification	Caprylic acid ammonium sulfate precipitation purified.
Buffer	0.01 M PBS (pH 7.4), 0.03% Proclin 300 and 50% Glycerol.
Preservative	0.03% Proclin 300
Stabilizer	50% Glycerol
Storage instruction	For continuous use, store undiluted antibody at 2-8°C for up to a week. For long-term storage, aliquot and store at -20°C. Storage in frost free freezers is not recommended. Avoid repeated freeze/thaw cycles. Suggest spin the vial prior to opening. The antibody solution should be gently mixed before use.
Note	For laboratory research only, not for drug, diagnostic or other use.

Bioinformation

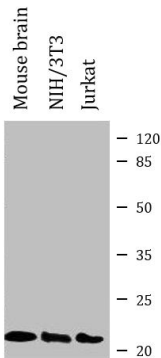
Gene Symbol	ARL8B
Gene Full Name	ADP-ribosylation factor-like 8B
Function	Plays a role in lysosome motility (PubMed:16537643, PubMed:25898167). In neurons, mediates the anterograde axonal long-range transport of presynaptic lysosome-related vesicles required for presynaptic biogenesis and synaptic function (By similarity). May play a role in chromosome segregation (PubMed:15331635). [UniProt]
Calculated Mw	22 kDa
Cellular Localization	Late endosome membrane. Lysosome membrane. Cytoplasm, cytoskeleton, spindle. Note=Localizes with microtubules at the spindle mid-zone during mitosis. [UniProt]

Images



ARG43276 anti-ARL8B antibody IHC-P image

Immunohistochemistry: Paraffin-embedded Human placenta tissue stained with ARG43276 anti-ARL8B antibody at 1:100 dilution.



ARG43276 anti-ARL8B antibody WB image

Western blot: Mouse brain, NIH/3T3 and Jurkat whole cell lysates stained with ARG43276 anti-ARL8B antibody at 4 µg/ml dilution.