

ARG43321 anti-Siglec 15 antibody

Package: 100 µl
Store at: -20°C

Summary

Product Description	Rabbit Polyclonal antibody recognizes Siglec 15
Tested Reactivity	Hu, Rat
Tested Application	ICC/IF, IHC-P, WB
Host	Rabbit
Clonality	Polyclonal
Isotype	IgG
Target Name	Siglec 15
Species	Human
Immunogen	Recombinant protein of Human Siglec 15.
Conjugation	Un-conjugated
Alternate Names	HsT1361; CD33 antigen-like 3; SIGLEC-15; CD33L3; Sialic acid-binding Ig-like lectin 15; Siglec-15

Application Instructions

Application table	Application	Dilution
	ICC/IF	1:50 - 1:200
	IHC-P	1:50 - 1:200
	WB	1:500 - 1:2000
Application Note	* The dilutions indicate recommended starting dilutions and the optimal dilutions or concentrations should be determined by the scientist.	
Positive Control	HepG2	
Observed Size	~ 38 kDa	

Properties

Form	Liquid
Purification	Affinity purified.
Buffer	PBS (pH 7.3), 0.02% Sodium azide and 50% Glycerol.
Preservative	0.02% Sodium azide
Stabilizer	50% Glycerol
Storage instruction	For continuous use, store undiluted antibody at 2-8°C for up to a week. For long-term storage, aliquot and store at -20°C. Storage in frost free freezers is not recommended. Avoid repeated freeze/thaw cycles. Suggest spin the vial prior to opening. The antibody solution should be gently mixed before use.

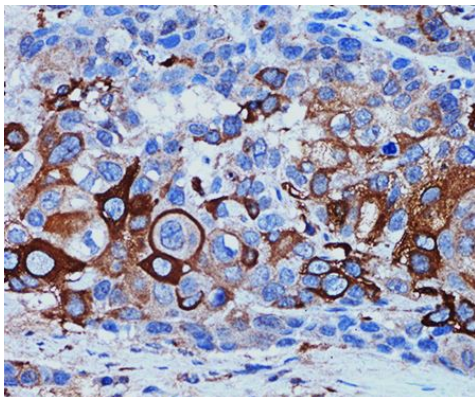
Note

For laboratory research only, not for drug, diagnostic or other use.

Bioinformation

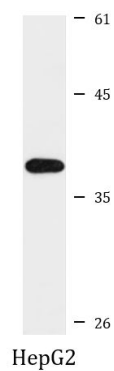
Gene Symbol	SIGLEC15
Gene Full Name	sialic acid binding Ig-like lectin 15
Function	Binds sialylated glycoproteins. [UniProt]
Calculated Mw	36 kDa
Cellular Localization	Membrane; Single-pass type I membrane protein. [UniProt]

Images



ARG43321 anti-Siglec 15 antibody IHC-P image

Immunohistochemistry: Paraffin-embedded Human esophageal cancer tissue stained with ARG43321 anti-Siglec 15 antibody at 1:100 dilution.



ARG43321 anti-Siglec 15 antibody WB image

Western blot: 25 µg of HepG2 cell lysate stained with ARG43321 anti-Siglec 15 antibody at 1:1000 dilution.