

**ARG43351**  
anti-SARS-CoV-2 NSP8 antibodyPackage: 100 µg  
Store at: -20°C

### Summary

Product Description	Rabbit Polyclonal antibody recognizes SARS-CoV-2 NSP8
Tested Reactivity	Virus
Tested Application	ELISA, WB
Host	Rabbit
Clonality	Polyclonal
Isotype	IgG
Target Name	SARS-CoV-2 NSP8
Species	Virus
Immunogen	A 14-amino acid synthetic peptide within aa. 40-90 of SARS-CoV-2 NSP8.
Conjugation	Un-conjugated

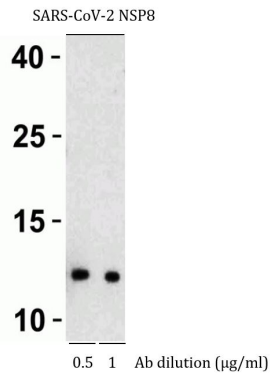
### Application Instructions

Application table	Application	Dilution
	ELISA	Assay-dependent
	WB	0.5 µg/ml

**Application Note** \* The dilutions indicate recommended starting dilutions and the optimal dilutions or concentrations should be determined by the scientist.

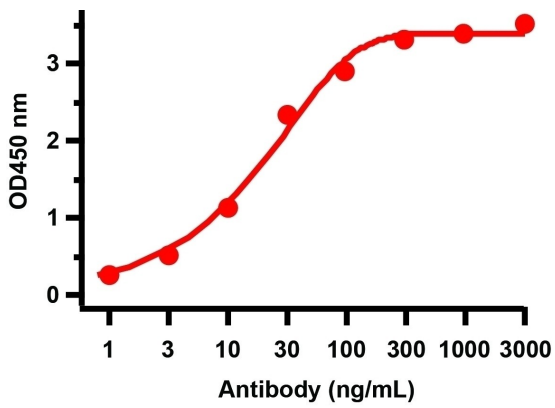
### Properties

Form	Liquid
Purification	Affinity purification with immunogen.
Buffer	PBS and 0.02% Sodium azide.
Preservative	0.02% Sodium azide
Concentration	1 mg/ml
Storage instruction	For continuous use, store undiluted antibody at 2-8°C for up to a week. For long-term storage, aliquot and store at -20°C or below. Storage in frost free freezers is not recommended. Avoid repeated freeze/thaw cycles. Suggest spin the vial prior to opening. The antibody solution should be gently mixed before use.
Note	For laboratory research only, not for drug, diagnostic or other use.



ARG43351 anti-SARS-CoV-2 NSP8 antibody WB image

Western blot: 30 ng of SARS-CoV-2 NSP8 protein stained with ARG43351 anti-SARS-CoV-2 NSP8 antibody at 0.5 µg/ml (left) or 1 µg/ml (right) dilution, 1 hour incubation at RT in 5% NFDN/TBST.



ARG43351 anti-SARS-CoV-2 NSP8 antibody ELISA image

Direct ELISA: SARS-CoV-2 NSP8 recombinant protein as coating antigen and ARG43351 anti-SARS-CoV-2 NSP8 antibody as the primary antibody. Detection range is from 1 ng/ml to 3000 ng/ml.