

## ARG43358 anti-Calmodulin antibody

Package: 100 µl  
Store at: -20°C

### Summary

Product Description	Rabbit Polyclonal antibody recognizes Calmodulin
Tested Reactivity	Hu, Ms
Tested Application	ICC/IF, WB
Host	Rabbit
Clonality	Polyclonal
Isotype	IgG
Target Name	Calmodulin
Species	Human
Immunogen	Synthetic peptide within aa. 1-100 of Human Calmodulin 3 (NP_005175.2).
Conjugation	Un-conjugated
Alternate Names	CaM; CALM; CAM1; CAM2; CAMB; PHKD; CPVT6; LQT16; PHKD3; CaMIII; HEL-S-72

### Application Instructions

Application table	Application	Dilution
	ICC/IF	1:50 - 1:200
	WB	1:500 - 1:2000
Application Note	* The dilutions indicate recommended starting dilutions and the optimal dilutions or concentrations should be determined by the scientist.	
Positive Control	Mouse brain	
Observed Size	17 kDa	

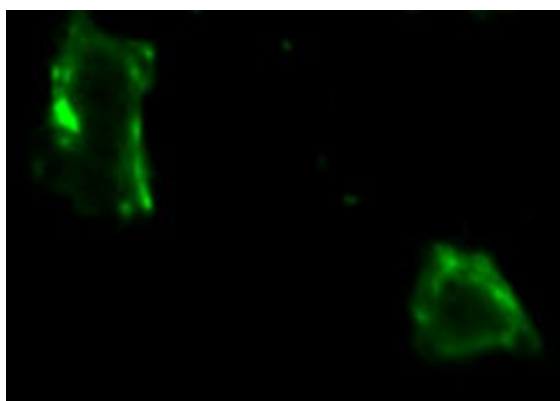
### Properties

Form	Liquid
Purification	Affinity purified.
Buffer	PBS (pH 7.3), 0.02% Sodium azide and 50% Glycerol.
Preservative	0.02% Sodium azide
Stabilizer	50% Glycerol
Storage instruction	For continuous use, store undiluted antibody at 2-8°C for up to a week. For long-term storage, aliquot and store at -20°C. Storage in frost free freezers is not recommended. Avoid repeated freeze/thaw cycles. Suggest spin the vial prior to opening. The antibody solution should be gently mixed before use.
Note	For laboratory research only, not for drug, diagnostic or other use.

## Bioinformation

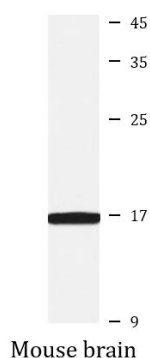
Gene Symbol	CALM3
Gene Full Name	calmodulin 3
Background	This gene encodes a member of a family of proteins that binds calcium and functions as a enzymatic co-factor. Activity of this protein is important in the regulation of the cell cycle and cytokinesis. Multiple alternatively spliced transcript variants have been observed at this gene. [provided by RefSeq, Aug 2016]
Function	Calmodulin mediates the control of a large number of enzymes, ion channels, aquaporins and other proteins through calcium-binding. Is a regulator of voltage-dependent L-type calcium channels (PubMed:31454269). Among the enzymes to be stimulated by the calmodulin-calcium complex are a number of protein kinases and phosphatases. Together with CCP110 and centrin, is involved in a genetic pathway that regulates the centrosome cycle and progression through cytokinesis. [UniProt]
Calculated Mw	17 kDa
Cellular Localization	Cytoplasm, cytoskeleton, spindle. Cytoplasm, cytoskeleton, spindle pole. Note=Distributed throughout the cell during interphase, but during mitosis becomes dramatically localized to the spindle poles and the spindle microtubules. [UniProt]

## Images



ARG43358 anti-Calmodulin antibody ICC/IF image

Immunofluorescence: HeLa cells stained with ARG43358 anti-Calmodulin antibody at 1:100 dilution.



ARG43358 anti-Calmodulin antibody WB image

Western blot: 25 µg of Mouse brain lysate stained with ARG43358 anti-Calmodulin antibody.