

ARG43402 anti-SLCO1B1 / OATP1B1 antibody

Package: 50 µg
Store at: -20°C

Summary

Product Description	Rabbit Polyclonal antibody recognizes SLCO1B1 / OATP1B1
Tested Reactivity	Hu
Tested Application	ICC/IF, WB
Host	Rabbit
Clonality	Polyclonal
Isotype	IgG
Target Name	SLCO1B1 / OATP1B1
Species	Human
Immunogen	A 14-amino acid synthetic peptide within aa. 641-691 of Human SLCO1B1 / OATP1B1.
Conjugation	Un-conjugated
Alternate Names	OATP-C; LST1; OATPC; SLC21A6; HBLRR; LST-1; Sodium-independent organic anion-transporting polypeptide 2; OATP-2; OATP2; Solute carrier organic anion transporter family member 1B1; Solute carrier family 21 member 6; Liver-specific organic anion transporter 1; OATP1B1

Application Instructions

Application table	Application	Dilution
	ICC/IF	2 - 5 µg/ml
	WB	1 - 2 µg/ml
Application Note	* The dilutions indicate recommended starting dilutions and the optimal dilutions or concentrations should be determined by the scientist.	
Positive Control	Human liver	
Observed Size	~ 80 kDa	

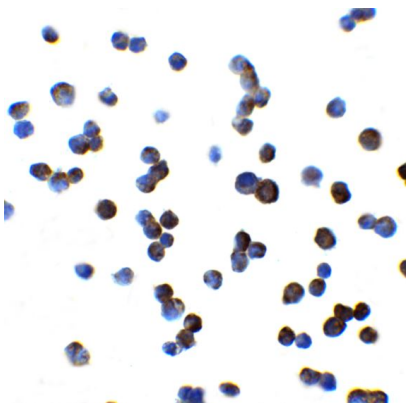
Properties

Form	Liquid
Purification	Affinity purification with immunogen.
Buffer	PBS and 0.02% Sodium azide.
Preservative	0.02% Sodium azide
Storage instruction	For continuous use, store undiluted antibody at 2-8°C for up to a week. For long-term storage, aliquot and store at -20°C or below. Storage in frost free freezers is not recommended. Avoid repeated freeze/thaw cycles. Suggest spin the vial prior to opening. The antibody solution should be gently mixed before use.
Note	For laboratory research only, not for drug, diagnostic or other use.

Bioinformation

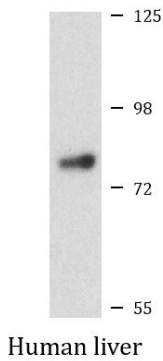
Gene Symbol	SLCO1B1
Gene Full Name	solute carrier organic anion transporter family, member 1B1
Background	This gene encodes a liver-specific member of the organic anion transporter family. The encoded protein is a transmembrane receptor that mediates the sodium-independent uptake of numerous endogenous compounds including bilirubin, 17-beta-glucuronosyl estradiol and leukotriene C4. This protein is also involved in the removal of drug compounds such as statins, bromosulphophthalein and rifampin from the blood into the hepatocytes. Polymorphisms in the gene encoding this protein are associated with impaired transporter function. [provided by RefSeq, Mar 2009]
Function	Mediates the Na(+)-independent uptake of organic anions such as pravastatin, taurocholate, methotrexate, dehydroepiandrosterone sulfate, 17-beta-glucuronosyl estradiol, estrone sulfate, prostaglandin E2, thromboxane B2, leukotriene C3, leukotriene E4, thyroxine and triiodothyronine. Involved in the clearance of bile acids and organic anions from the liver. [UniProt]
Calculated Mw	76 kDa
Cellular Localization	Basolateral cell membrane; Multi-pass membrane protein. Note=Detected in basolateral membranes of hepatocytes. [UniProt]

Images



ARG43402 anti-SLCO1B1 / OATP1B1 antibody ICC image

Immunocytochemistry: HepG2 cells stained with ARG43402 anti-SLCO1B1 / OATP1B1 antibody at 2.5 µg/ml dilution.



ARG43402 anti-SLCO1B1 / OATP1B1 antibody WB image

Western blot: Human liver lysate stained with ARG43402 anti-SLCO1B1 / OATP1B1 antibody at 1 µg/ml dilution.