

## ARG43423 anti-MED1 / TRAP220 antibody

Package: 50 µl  
Store at: -20°C

### Summary

Product Description	Rabbit Polyclonal antibody recognizes MED1 / TRAP220
Tested Reactivity	Hu, Ms, Rat
Tested Application	IHC-P, WB
Host	Rabbit
Clonality	Polyclonal
Isotype	IgG
Target Name	MED1 / TRAP220
Species	Human
Immunogen	Synthetic peptide corresponding to aa. 664-720 of Human MED1 / TRAP220.
Conjugation	Un-conjugated
Alternate Names	TR-interacting protein 2; TRIP-2; Mediator of RNA polymerase II transcription subunit 1; DRIP230; PPAR-binding protein; Vitamin D receptor-interacting protein complex component DRIP205; Peroxisome proliferator-activated receptor-binding protein; Trap220; DRIP205; CRSP1; TRAP220; PBP; p53 regulatory protein RB18A; CRSP200; Mediator complex subunit 1; Thyroid receptor-interacting protein 2; PPARBP; TRIP2; PPARGBP; ARC205; Thyroid hormone receptor-associated protein complex 220 kDa component; RB18A; Activator-recruited cofactor 205 kDa component

### Application Instructions

Application table	Application	Dilution
	IHC-P	1:50 - 1:200
	WB	1:500 - 1:1000
Application Note	* The dilutions indicate recommended starting dilutions and the optimal dilutions or concentrations should be determined by the scientist.	
Positive Control	A549, HEK293T, PC12 and CT26	
Observed Size	~ 250 kDa	

### Properties

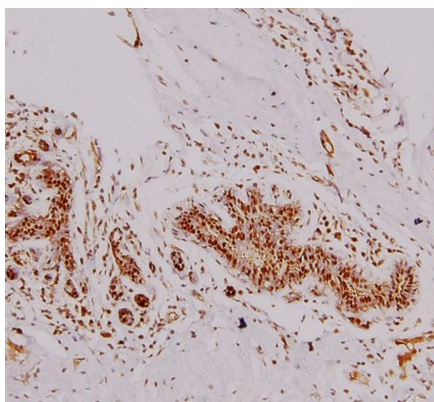
Form	Liquid
Purification	Affinity purification with immunogen.
Purity	> 95% (by SDS-PAGE)
Buffer	PBS (pH 7.2), 0.02% Sodium azide and 50% Glycerol.
Preservative	0.02% Sodium azide
Stabilizer	50% Glycerol

Concentration	1 mg/ml
Storage instruction	For continuous use, store undiluted antibody at 2-8°C for up to a week. For long-term storage, aliquot and store at -20°C. Storage in frost free freezers is not recommended. Avoid repeated freeze/thaw cycles. Suggest spin the vial prior to opening. The antibody solution should be gently mixed before use.
Note	For laboratory research only, not for drug, diagnostic or other use.

## Bioinformation

Gene Symbol	MED1
Gene Full Name	mediator complex subunit 1
Background	The activation of gene transcription is a multistep process that is triggered by factors that recognize transcriptional enhancer sites in DNA. These factors work with co-activators to direct transcriptional initiation by the RNA polymerase II apparatus. The protein encoded by this gene is a subunit of the CRSP (cofactor required for SP1 activation) complex, which, along with TFIID, is required for efficient activation by SP1. This protein is also a component of other multisubunit complexes e.g. thyroid hormone receptor-(TR-) associated proteins which interact with TR and facilitate TR function on DNA templates in conjunction with initiation factors and cofactors. It also regulates p53-dependent apoptosis and it is essential for adipogenesis. This protein is known to have the ability to self-oligomerize. [provided by RefSeq, Jul 2008]
Function	Component of the Mediator complex, a coactivator involved in the regulated transcription of nearly all RNA polymerase II-dependent genes. Mediator functions as a bridge to convey information from gene-specific regulatory proteins to the basal RNA polymerase II transcription machinery. Mediator is recruited to promoters by direct interactions with regulatory proteins and serves as a scaffold for the assembly of a functional preinitiation complex with RNA polymerase II and the general transcription factors (PubMed:10406464, PubMed:11867769, PubMed:12037571, PubMed:12218053, PubMed:12556447, PubMed:14636573, PubMed:15340084, PubMed:15471764, PubMed:15989967, PubMed:16574658, PubMed:9653119). Acts as a coactivator for GATA1-mediated transcriptional activation during erythroid differentiation of K562 erythroleukemia cells (PubMed:24245781). [UniProt]
Calculated Mw	168 kDa
PTM	Phosphorylated by MAPK1 or MAPK3 during G2/M phase which may enhance protein stability and promote entry into the nucleolus. [UniProt]
Cellular Localization	Nucleus. Note=A subset of the protein may enter the nucleolus subsequent to phosphorylation by MAPK1 or MAPK3. [UniProt]

## Images



ARG43423 anti-MED1 / TRAP220 antibody IHC-P image

Immunohistochemistry: Paraffin-embedded Human breast carcinoma tissue stained with ARG43423 anti-MED1 / TRAP220 antibody at 1:100 dilution.

ARG43423 anti-MED1 / TRAP220 antibody WB image

Western blot: 40 µg of A549, HEK293T, PC12 and CT26 whole cell lysates stained with ARG43423 anti-MED1 / TRAP220 antibody at 1:500 dilution.

