

ARG43456 anti-SLC29A3 / ENT3 antibody

Package: 50 µg
Store at: -20°C

Summary

Product Description	Rabbit Polyclonal antibody recognizes SLC29A3 / ENT3
Tested Reactivity	Ms, Rat
Predict Reactivity	Hu
Tested Application	IHC-P, WB
Specificity	This SLC29A3 / ENT antibody is predicted to not cross-react with other SLC29 proteins.
Host	Rabbit
Clonality	Polyclonal
Isotype	IgG
Target Name	SLC29A3 / ENT3
Species	Human
Immunogen	A 19 amino acid peptide within aa. N-terminal of Human SLC29A3 / ENT3.
Conjugation	Un-conjugated
Alternate Names	Equilibrative nucleoside transporter 3; ENT3; HJCD; PHID; HCLAP; Solute carrier family 29 member 3; UNQ717/PRO1380; hENT3

Application Instructions

Application table	Application	Dilution
	IHC-P	5 µg/mL for immunohistochemistry and 20 µg/mL for immunofluorescence
	WB	1 - 2 µg/mL
Application Note	* The dilutions indicate recommended starting dilutions and the optimal dilutions or concentrations should be determined by the scientist.	
Observed Size	50-70 kDa (70 kda might be protein with PTM)	

Properties

Form	Liquid
Purification	Affinity purification with immunogen.
Buffer	PBS and 0.02% Sodium azide.
Preservative	0.02% Sodium azide
Concentration	1 mg/ml
Storage instruction	For continuous use, store undiluted antibody at 2-8°C for up to a week. For long-term storage, aliquot and store at -20°C or below. Storage in frost free freezers is not recommended. Avoid repeated freeze/thaw cycles. Suggest spin the vial prior to opening. The antibody solution should be gently mixed

before use.

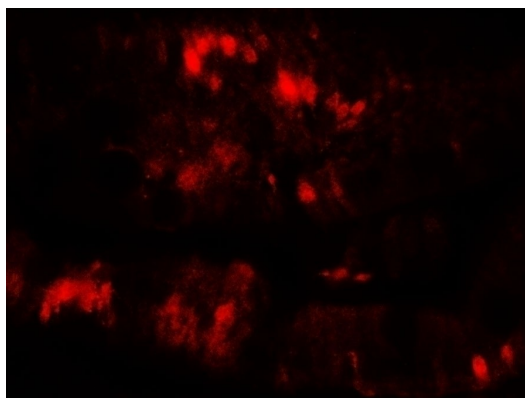
Note

For laboratory research only, not for drug, diagnostic or other use.

Bioinformation

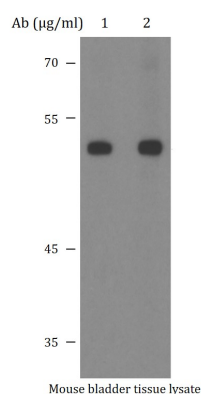
Gene Symbol	SLC29A3
Gene Full Name	solute carrier family 29 member 3
Background	This gene encodes a nucleoside transporter. The encoded protein plays a role in cellular uptake of nucleosides, nucleobases, and their related analogs. Mutations in this gene have been associated with H syndrome, which is characterized by cutaneous hyperpigmentation and hypertrichosis, hepatosplenomegaly, heart anomalies, and hypogonadism. A related disorder, PHID (pigmented hypertrichosis with insulin-dependent diabetes mellitus), has also been associated with mutations at this locus. Alternatively spliced transcript variants have been described.[provided by RefSeq, Mar 2010]
Function	Mediates both influx and efflux of nucleosides across the membrane (equilibrative transporter). Mediates transport of adenine, adenosine and uridine, as well as several nucleoside analog drugs, such as anticancer and antiviral agents, including cladribine, cordycepin, tubercidin and AZT. Does not transport hypoxanthine.[provided by uniprot]
Calculated Mw	51.8 kDa
PTM	Glycoprotein, Phosphoprotein
Cellular Localization	Endosome, Lysosome, Membrane

Images



ARG43456 anti-SLC29A3 / ENT3 antibody IHC-P image

Immunofluorescence: Paraffin-embedded Rat colon muscle tissue stained with ARG43456 anti-SLC29A3 / ENT3 antibody at 20 µg/ml dilution.



ARG43456 anti-SLC29A3 / ENT3 antibody WB image

Western blot: Mouse bladder tissue lysate stained with ARG43456 anti-SLC29A3 / ENT3 antibody at 1 or 2 µg/ml dilution and incubated at RT for 1 hour, in 5% NFDm/TBST.