

## ARG43465 anti-CHAMP1 antibody

Package: 100 µl  
Store at: -20°C

### Summary

Product Description	Rabbit Polyclonal antibody recognizes CHAMP1.
Tested Reactivity	Hu
Tested Application	ICC/IF, WB
Host	Rabbit
Clonality	Polyclonal
Isotype	IgG
Target Name	CHAMP1
Species	Human
Immunogen	Purified recombinant protein corresponding to human CHAMP1.
Conjugation	Un-conjugated
Alternate Names	CAMP; CHAMP; ZNF828; C13orf8

### Application Instructions

Application table	Application	Dilution
	ICC/IF	1:50 - 1:200
	WB	1:500 - 1:2000
Application Note	* The dilutions indicate recommended starting dilutions and the optimal dilutions or concentrations should be determined by the scientist.	

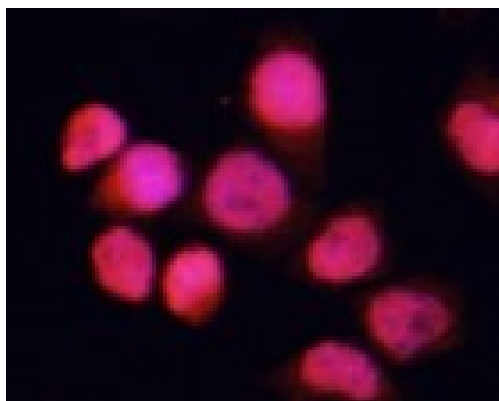
### Properties

Form	Liquid
Purification	Affinity purified.
Buffer	PBS (pH 7.3), 0.02% Sodium azide and 50% Glycerol.
Preservative	0.02% Sodium azide
Stabilizer	50% Glycerol
Storage instruction	For continuous use, store undiluted antibody at 2-8°C for up to a week. For long-term storage, aliquot and store at -20°C or below. Storage in frost free freezers is not recommended. Avoid repeated freeze/thaw cycles. Suggest spin the vial prior to opening. The antibody solution should be gently mixed before use.
Note	For laboratory research only, not for drug, diagnostic or other use.

### Bioinformation

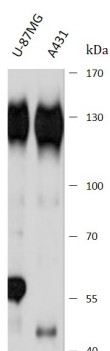
Gene Symbol	CHAMP1
Gene Full Name	chromosome alignment maintaining phosphoprotein 1
Function	Required for proper alignment of chromosomes at metaphase and their accurate segregation during mitosis. Involved in the maintenance of spindle microtubules attachment to the kinetochore during sister chromatid biorientation. May recruit CENPE and CENPF to the kinetochore. [UniProt]

## Images



ARG43465 anti-CHAMP1 antibody ICC/IF image

Immunofluorescence: HeLa stained with ARG43465 anti-CHAMP1 antibody at 1:100 dilution.



ARG43465 anti-CHAMP1 antibody WB image

Western blot: U-87MG and A431 stained with ARG43465 anti-CHAMP1 antibody at 1:3000 dilution.