

ARG43536 anti-LC3B antibody

Package: 100 µl
Store at: -20°C

Summary

Product Description	Rabbit Polyclonal antibody recognizes LC3B.
Tested Reactivity	Hu, Ms, Rat
Tested Application	ICC/IF, IP, WB
Host	Rabbit
Clonality	Polyclonal
Isotype	IgG
Target Name	LC3B
Species	Human
Immunogen	Synthetic peptide derived from human LC3B
Conjugation	Un-conjugated
Alternate Names	LC3B; ATG8F; MAP1LC3B-a; MAP1A/1BLC3

Application Instructions

Application table	Application	Dilution
	ICC/IF	1:50 - 1:200
	IP	1:20 - 1:50
	WB	1:500 - 1:2000
Application Note	* The dilutions indicate recommended starting dilutions and the optimal dilutions or concentrations should be determined by the scientist.	

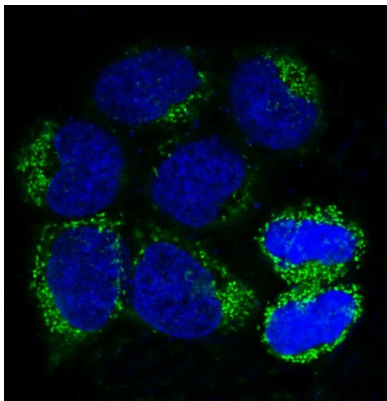
Properties

Form	Liquid
Purification	Affinity purified.
Buffer	PBS (pH 7.4), 0.02% Sodium azide and 50% Glycerol.
Preservative	0.02% Sodium azide
Stabilizer	50% Glycerol
Storage instruction	For continuous use, store undiluted antibody at 2-8°C for up to a week. For long-term storage, aliquot and store at -20°C or below. Storage in frost free freezers is not recommended. Avoid repeated freeze/thaw cycles. Suggest spin the vial prior to opening. The antibody solution should be gently mixed before use.
Note	For laboratory research only, not for drug, diagnostic or other use.

Bioinformation

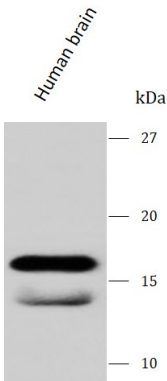
Gene Symbol	MAP1LC3B
Gene Full Name	microtubule-associated protein 1 light chain 3 beta
Background	The product of this gene is a subunit of neuronal microtubule-associated MAP1A and MAP1B proteins, which are involved in microtubule assembly and important for neurogenesis. Studies on the rat homolog implicate a role for this gene in autophagy, a process that involves the bulk degradation of cytoplasmic component. [provided by RefSeq, Jul 2008]
Function	Ubiquitin-like modifier involved in formation of autophagosomal vacuoles (autophagosomes). Plays a role in mitophagy which contributes to regulate mitochondrial quantity and quality by eliminating the mitochondria to a basal level to fulfill cellular energy requirements and preventing excess ROS production. Whereas LC3s are involved in elongation of the phagophore membrane, the GABARAP/GATE-16 subfamily is essential for a later stage in autophagosome maturation. Promotes primary ciliogenesis by removing OFD1 from centriolar satellites via the autophagic pathway. [UniProt]

Images



ARG43536 anti-LC3B antibody ICC/IF image

Immunofluorescence: HeLa stained with ARG43536 anti-LC3B antibody.

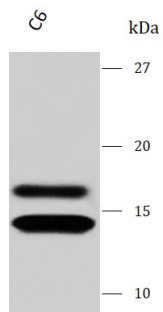


ARG43536 anti-LC3B antibody WB image

Western blot: Human brain stained with ARG43536 anti-LC3B antibody.

ARG43536 anti-LC3B antibody WB image

Western blot: C6 stained with ARG43536 anti-LC3B antibody.



ARG43536 anti-LC3B antibody WB image

Western blot: RAW 264.7 stained with ARG43536 anti-LC3B antibody.

