

## ARG43641 anti-CLEC2 / CLEC1B antibody

Package: 100 µl  
Store at: -20°C

### Summary

Product Description	Rabbit Polyclonal antibody recognizes CLEC2 / CLEC1B
Tested Reactivity	Hu
Tested Application	WB
Specificity	This antibody can block the interaction of human CLEC-2 with its endogenous ligand Podoplanin. This antibody does not cross react with Rabbit CLEC-2 when tested via FACS.
Host	Rabbit
Clonality	Polyclonal
Isotype	IgG
Target Name	CLEC2 / CLEC1B
Species	Human
Immunogen	Synthetic peptide within a.a. 40-80 of Human CLEC2.
Conjugation	Un-conjugated
Alternate Names	CLEC2; C-type lectin domain family 1 member B; CLEC2B; PRO1384; C-type lectin-like receptor 2; CLEC-2; 1810061I13Rik; QDED721

### Application Instructions

Application table	Application	Dilution
	WB	1:1000 - 1:3000
Application Note	* The dilutions indicate recommended starting dilutions and the optimal dilutions or concentrations should be determined by the scientist.	
Observed Size	28 kDa	

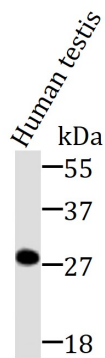
### Properties

Form	Liquid
Purification	Purification with Protein A.
Buffer	PBS and 0.09% Sodium azide.
Preservative	0.09% Sodium azide
Concentration	Batch dependent
Storage instruction	For continuous use, store undiluted antibody at 2-8°C for up to a week. For long-term storage, aliquot and store at -20°C or below. Storage in frost free freezers is not recommended. Avoid repeated freeze/thaw cycles. Suggest spin the vial prior to opening. The antibody solution should be gently mixed before use.
Note	For laboratory research only, not for drug, diagnostic or other use.

Bioinformation

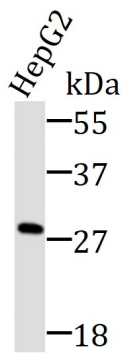
Gene Symbol	CLEC1B
Gene Full Name	C-type lectin domain family 1, member B
Background	Natural killer (NK) cells express multiple calcium-dependent (C-type) lectin-like receptors, such as CD94 (KLRD1; MIM 602894) and NKG2D (KLRC4; MIM 602893), that interact with major histocompatibility complex class I molecules and either inhibit or activate cytotoxicity and cytokine secretion. CLEC2 is a C-type lectin-like receptor expressed in myeloid cells and NK cells (Colonna et al., 2000 [PubMed 10671229]).[supplied by OMIM, Jan 2011]
Function	

Images



ARG43641 anti-CLEC2 / CLEC1B antibody WB image

Western blot: Human testis lysates were stained with ARG43641 anti-CLEC2 / CLEC1B antibody at 1:2000 dilution, overnight at 4°C.



ARG43641 anti-CLEC2 / CLEC1B antibody WB image

Western blot: HepG2 cells lysates were stained with ARG43641 anti-CLEC2 / CLEC1B antibody at 1:2000 dilution, overnight at 4°C.