

ARG43663 anti-Anoctamin 5 antibody

Package: 100 µl
Store at: -20°C

Summary

Product Description	Rabbit Polyclonal antibody recognizes Anoctamin 5
Tested Reactivity	Hu, Ms, Rat
Tested Application	WB
Host	Rabbit
Clonality	Polyclonal
Isotype	IgG
Target Name	Anoctamin 5
Species	Human
Immunogen	Recombinant fragment corresponding to a.a. 1-300 of Human Anoctamin 5.
Conjugation	Un-conjugated
Alternate Names	TMEM16E; Transmembrane protein 16E; GDD1; LGMD2L; Anoctamin-5; Gnathodiaphyseal dysplasia 1 protein; Limb Girdle Muscular Dystrophy 2L (Autosomal Recessive); Integral Membrane Protein GDD1; LGMDR12

Application Instructions

Predict Reactivity Note	Human				
Application table	<table> <tr> <th>Application</th><th>Dilution</th></tr> <tr> <td>WB</td><td>1:500 - 1:2000</td></tr> </table>	Application	Dilution	WB	1:500 - 1:2000
Application	Dilution				
WB	1:500 - 1:2000				
Application Note	* The dilutions indicate recommended starting dilutions and the optimal dilutions or concentrations should be determined by the scientist.				
Positive Control	Skeletal muscle.				

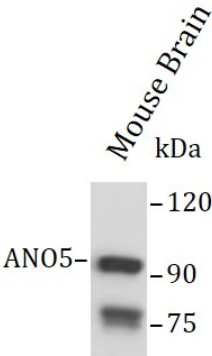
Properties

Form	Liquid
Purification	Affinity purified.
Buffer	PBS, 0.01% Thiomersal and 50% Glycerol.
Preservative	0.01% Thiomersal
Stabilizer	50% Glycerol
Concentration	Batch dependent
Storage instruction	For continuous use, store undiluted antibody at 2-8°C for up to a week. For long-term storage, aliquot and store at -20°C or below. Storage in frost free freezers is not recommended. Avoid repeated freeze/thaw cycles. Suggest spin the vial prior to opening. The antibody solution should be gently mixed before use.

Bioinformation

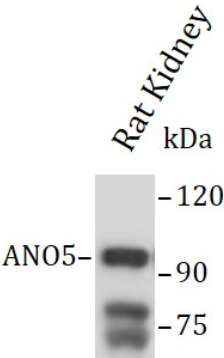
Gene Symbol	ANO5
Gene Full Name	Anoctamin 5
Background	This gene encodes a member of the anoctamin family of transmembrane proteins. The encoded protein is likely a calcium activated chloride channel. Mutations in this gene have been associated with gnathodiaphyseal dysplasia. Alternatively spliced transcript variants have been described. [provided by RefSeq, Nov 2009]
Function	Does not exhibit calcium-activated chloride channel (CaCC) activity. [UniProt]
Calculated Mw	107 kDa
PTM	Glycoprotein [UniProt]
Cellular Localization	Cell membrane; Endoplasmic reticulum; Membrane [UniProt]

Images



ARG43663 anti-Anoctamin 5 antibody WB image

Western blot: Miuse Brain stained with ARG43663 anti-Anoctamin 5 antibody at 1:1000 dilution



ARG43663 anti-Anoctamin 5 antibody WB image

Western blot: Rat Kidney stained with ARG43663 anti-Anoctamin 5 antibody at 1:1000 dilution