

ARG43670 anti-CD35 / CR1 antibody [CR1/802]

Package: 50 µg
Store at: -20°C

Summary

| | |
|---------------------|---|
| Product Description | Mouse Monoclonal antibody [CR1/802] recognizes CD35 / CR1 |
| Tested Reactivity | Hu |
| Tested Application | FACS, ICC/IF, IHC-P |
| Host | Mouse |
| Clonality | Monoclonal |
| Clone | CR1/802 |
| Isotype | IgG |
| Target Name | CD35 / CR1 |
| Species | Human |
| Immunogen | Recombinant fusion protein corresponding to Human CD35 / CR1. |
| Conjugation | Un-conjugated |
| Alternate Names | C3b/C4b receptor; C4BR; CD antigen CD35; KN; CD35; C3BR; Complement receptor type 1 |

Application Instructions

| Application table | Application | Dilution |
|-------------------|--|------------------------------------|
| | FACS | 0.5 - 1 µg / 10 ⁶ cells |
| | ICC/IF | 1 - 2 µg/ml |
| | IHC-P | 0.5 - 1 µg/ml for 30 min at RT |
| Application Note | IHC-P: Antigen retrieval: Boil formalin-fixed, paraffin-embedded tissue sections in 10mM Citrate buffer (pH 6.0) for 10-20 min followed by cooling at RT for 20 min. * The dilutions indicate recommended starting dilutions and the optimal dilutions or concentrations should be determined by the scientist. | |

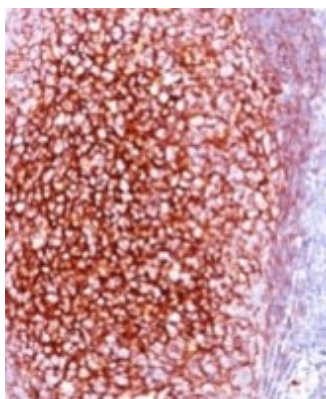
Properties

| | |
|---------------------|---|
| Form | Liquid |
| Purification | Purification with Protein G. |
| Buffer | PBS (pH 7.4), 0.05% Sodium azide and 0.1 mg/ml BSA. |
| Preservative | 0.05% Sodium azide |
| Stabilizer | 0.1 mg/ml BSA |
| Concentration | 0.2 mg/ml |
| Storage instruction | For continuous use, store undiluted antibody at 2-8°C for up to a week. For long-term storage, aliquot and store at -20°C. Storage in frost free freezers is not recommended. Avoid repeated freeze/thaw cycles. Suggest spin the vial prior to opening. The antibody solution should be gently mixed before use. |

Bioinformation

| | |
|-----------------------|--|
| Gene Symbol | CR1 |
| Gene Full Name | complement component (3b/4b) receptor 1 (Knops blood group) |
| Background | <p>This gene is a member of the receptors of complement activation (RCA) family and is located in the 'cluster RCA' region of chromosome 1. The gene encodes a Monomeric single-pass type I membrane glycoprotein found on erythrocytes, leukocytes, glomerular podocytes, and splenic follicular dendritic cells. The Knops blood group system is a system of antigens located on this protein. The protein mediates cellular binding to particles and immune complexes that have activated complement. Decreases in expression of this protein and/or mutations in its gene have been associated with gallbladder carcinomas, mesangiocapillary glomerulonephritis, systemic lupus erythematosus and sarcoidosis. Mutations in this gene have also been associated with a reduction in Plasmodium falciparum rosetting, conferring protection against severe malaria. Alternate allele-specific splice variants, encoding different isoforms, have been characterized. Additional allele specific isoforms, including a secreted form, have been described but have not been fully characterized. [provided by RefSeq, Jul 2008]</p> |
| Function | Mediates cellular binding of particles and immune complexes that have activated complement. [UniProt] |
| Calculated Mw | 224 kDa |
| PTM | Disulfide bond; Glycoprotein; Pyrrolidone carboxylic acid |
| Cellular Localization | Membrane; Single-pass type I membrane protein. [UniProt] |

Images



ARG43670 anti-CD35 / CR1 antibody [CR1/802] IHC-P image

Immunohistochemistry: Formalin-fixed and paraffin-embedded Mouse Kidney tissue stained with ARG43670 anti-CD35 / CR1 antibody [CR1/802] at 1:200 dilution. Antigen Retrieval: Heat mediated was performed using 10 mM citrate buffer pH 6.0