

## ARG43671 anti-CD50 / ICAM3 antibody [ICAM3/1019]

Package: 50 µg  
Store at: -20°C

### Summary

Product Description	Mouse Monoclonal antibody [ICAM3/1019] recognizes CD50 / ICAM3
Tested Reactivity	Hu
Tested Application	IHC-P, WB
Host	Mouse
Clonality	Monoclonal
Clone	ICAM3/1019
Isotype	IgG2b, kappa
Target Name	CD50 / ICAM3
Species	Human
Immunogen	Recombinant protein corresponding to CD50 / ICAM3 antibody.
Conjugation	Un-conjugated
Alternate Names	CD50; CD antigen CD50; Intercellular adhesion molecule 3; ICAM-3; ICAM-R; CDw50; CDW50

### Application Instructions

Application table	Application	Dilution
	IHC-P	1 - 2 µg/ml for 30 min at RT
	WB	1 - 2 µg/ml
Application Note	<p>Antigen retrieval for IHC-P: Staining of formalin/paraffin tissues requires boiling tissue sections in 10mM Citrate buffer, pH 6.0, for 10-20 min followed by cooling at RT for 20 min.</p> <p>* The dilutions indicate recommended starting dilutions and the optimal dilutions or concentrations should be determined by the scientist.</p>	
Observed Size	100-160 kDa	

### Properties

Form	Liquid
Purification	Purification with Protein G.
Buffer	PBS (pH 7.4), 0.05% Sodium azide and 0.1 mg/ml BSA.
Preservative	0.05% Sodium azide
Stabilizer	0.1 mg/ml BSA
Concentration	0.2 mg/ml
Storage instruction	For continuous use, store undiluted antibody at 2-8°C for up to a week. For long-term storage, aliquot and store at -20°C or below. Storage in frost free freezers is not recommended. Avoid repeated

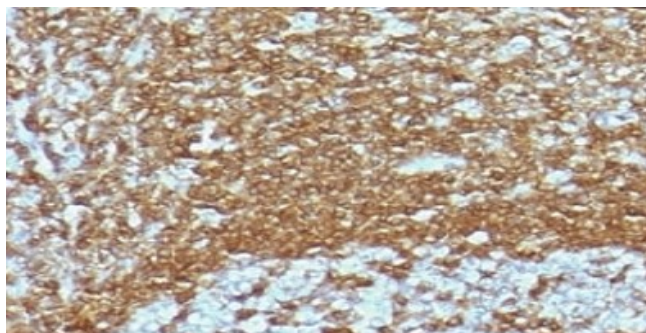
freeze/thaw cycles. Suggest spin the vial prior to opening. The antibody solution should be gently mixed before use.

**Note** For laboratory research only, not for drug, diagnostic or other use.

## Bioinformation

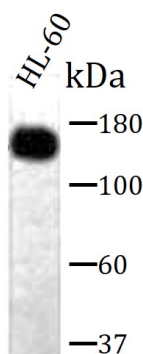
Gene Symbol	ICAM3
Gene Full Name	intercellular adhesion molecule 3
Background	The protein encoded by this gene is a member of the intercellular adhesion molecule (ICAM) family. All ICAM proteins are type I transmembrane glycoproteins, contain 2-9 immunoglobulin-like C2-type domains, and bind to the leukocyte adhesion LFA-1 protein. This protein is constitutively and abundantly expressed by all leucocytes and may be the most important ligand for LFA-1 in the initiation of the immune response. It functions not only as an adhesion molecule, but also as a potent signalling molecule. [provided by RefSeq, Jul 2008]
Function	ICAM proteins are ligands for the leukocyte adhesion protein LFA-1 (integrin alpha-L/beta-2). ICAM3 is also a ligand for integrin alpha-D/beta-2. [UniProt]
Calculated Mw	60 kDa
PTM	Upon stimulation by a physiologic stimuli becomes rapidly and transiently phosphorylated on serine residues. N-glycosylated; glycans consist of a mixture of tri- and tetra-antennary complex-type chains and high-mannose chains.
Cellular Localization	Cell surface

## Images



ARG43671 anti-CD50 / ICAM3 antibody [ICAM3/1019] IHC-P image

Immunohistochemistry: Formalin-fixed and paraffin-embedded Human Tonsil tissue stained with ARG43671 anti-CD50 / ICAM3 antibody [ICAM3/1019] at 1:100 dilution. Antigen Retrieval: Heat mediated was performed using 10 mM citrate buffer pH 6.0



ARG43671 anti-CD50 / ICAM3 antibody [ICAM3/1019] WB image

Western blot: HL-60 cell lysate ARG43671 anti-CD50 / ICAM3 antibody [ICAM3/1019] at 1:100 dilution