

## ARG43692 anti-Bcl 11A antibody

Package: 100 µl  
Store at: -20°C

### Summary

Product Description	Rabbit Polyclonal antibody recognizes Bcl 11A
Tested Reactivity	Hu
Tested Application	ICC/IF, IHC-P, WB
Host	Rabbit
Clonality	Polyclonal
Isotype	IgG
Target Name	Bcl 11A
Species	Human
Immunogen	Recombinant fragment corresponding to BCL11A.
Conjugation	Un-conjugated
Alternate Names	BCL11A-S; Zinc finger protein 856; BCL11A-XL; HBFQTL5; COUP-TF-interacting protein 1; CTIP1; B-cell lymphoma/leukemia 11A; Ecotropic viral integration site 9 protein homolog; EVI-9; ZNF856; BCL-11A; B-cell CLL/lymphoma 11A; EVI9; BCL11a-M; BCL11A-L

### Application Instructions

Application table	Application	Dilution
	ICC/IF	1:50 - 1:200
	IHC-P	1:50 - 1:100
	WB	1:500 - 1:1000
Application Note	* The dilutions indicate recommended starting dilutions and the optimal dilutions or concentrations should be determined by the scientist.	
Positive Control	Ramos	
Observed Size	~ 100 - 145 kDa	

### Properties

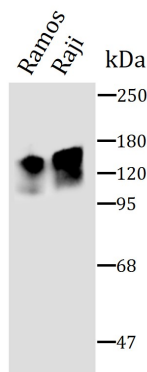
Form	Liquid
Purification	Affinity purified.
Buffer	PBS (pH 7.4), 150 mM NaCl, 0.02% Sodium azide and 50% Glycerol.
Preservative	0.02% Sodium azide
Stabilizer	50% Glycerol
Concentration	Batch dependent

Storage instruction	For continuous use, store undiluted antibody at 2-8°C for up to a week. For long-term storage, aliquot and store at -20°C or below. Storage in frost free freezers is not recommended. Avoid repeated freeze/thaw cycles. Suggest spin the vial prior to opening. The antibody solution should be gently mixed before use.
Note	For laboratory research only, not for drug, diagnostic or other use.

## Bioinformation

Gene Symbol	BCL11A
Gene Full Name	B-cell CLL/lymphoma 11A (zinc finger protein)
Background	This gene encodes a C2H2 type zinc-finger protein by its similarity to the mouse Bcl11a/Evi9 protein. The corresponding mouse gene is a common site of retroviral integration in myeloid leukemia, and may function as a leukemia disease gene, in part, through its interaction with BCL6. During hematopoietic cell differentiation, this gene is down-regulated. It is possibly involved in lymphoma pathogenesis since translocations associated with B-cell malignancies also deregulates its expression. Multiple transcript variants encoding several different isoforms have been found for this gene. [provided by RefSeq, Jul 2008]
Function	Functions as a myeloid and B-cell proto-oncogene. May play important roles in leukemogenesis and hematopoiesis. An essential factor in lymphopoiesis, is required for B-cell formation in fetal liver. May function as a modulator of the transcriptional repression activity of ARP1 (By similarity). [UniProt]
Calculated Mw	91 kDa
PTM	Sumoylated with SUMO1. [UniProt]

## Images



ARG43692 anti-Bcl 11A antibody WB image

Western blot: Ramos and Raji cells lysates stained with ARG43692 anti-Bcl 11A antibody at 1:1000 dilution.