

ARG43698 anti-CD273 / PD-L2 antibody

Package: 100 µl
Store at: -20°C

Summary

| | |
|---------------------|--|
| Product Description | Rabbit Polyclonal antibody recognizes CD273 / PD-L2 |
| Tested Reactivity | Hu, Rat |
| Predict Reactivity | Ms |
| Tested Application | WB |
| Host | Rabbit |
| Clonality | Polyclonal |
| Isotype | IgG |
| Target Name | CD273 / PD-L2 |
| Species | Human |
| Immunogen | Synthetic peptide corresponding to Human CD273/PD-L2. |
| Conjugation | Un-conjugated |
| Alternate Names | B7DC; bA574F11.2; PDL2; CD antigen CD273; PD-L2; Programmed cell death 1 ligand 2; CD273; Btdc; PDCD1L2; Programmed death ligand 2; Butyrophilin B7-DC; B7-DC; PD-1 ligand 2; PDCD1 ligand 2 |

Application Instructions

| | | |
|-------------------|--|----------------|
| Application table | Application | Dilution |
| | WB | 1:500 - 1:1000 |
| Application Note | * The dilutions indicate recommended starting dilutions and the optimal dilutions or concentrations should be determined by the scientist. | |
| Observed Size | ~30 - 50 kDa | |

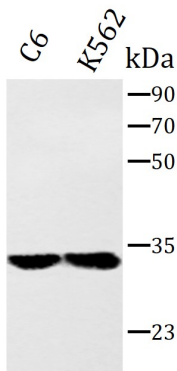
Properties

| | |
|---------------------|--|
| Form | Liquid |
| Purification | Affinity purified. |
| Buffer | 50 mM Tris-Glycine (pH 7.4), 150 mM NaCl, 0.01% Sodium azide, 40% Glycerol and 0.05% BSA. |
| Preservative | 0.01% Sodium azide |
| Stabilizer | 40% Glycerol and 0.05% BSA |
| Concentration | Batch dependent |
| Storage instruction | For continuous use, store undiluted antibody at 2-8°C for up to a week. For long-term storage, aliquot and store at -20°C or below. Storage in frost free freezers is not recommended. Avoid repeated freeze/thaw cycles. Suggest spin the vial prior to opening. The antibody solution should be gently mixed before use. |

Bioinformation

| | |
|-----------------------|--|
| Gene Symbol | PDCD1LG2 |
| Gene Full Name | programmed cell death 1 ligand 2 |
| Function | Involved in the costimulatory signal, essential for T-cell proliferation and IFNG production in a PDCD1-independent manner. Interaction with PDCD1 inhibits T-cell proliferation by blocking cell cycle progression and cytokine production (By similarity). [UniProt] |
| Highlight | Related products: PD-L2 antibodies ; PD-L2 ELISA Kits ; Related news: The best solution for PD-1/PD-L1 research |
| Calculated Mw | 31 kDa |
| PTM | Disulfide bond; Glycoprotein |
| Cellular Localization | Cell membrane; Membrane; Secreted |

Images



ARG43698 anti-CD273 / PD-L2 antibody WB image

Western blot: C6 and K562 cells stained with ARG43698 anti-CD273 / PD-L2 antibody at 1:1000 dilution.