

## ARG43772 anti-CD107b / LAMP2 antibody

Package: 100 µl  
Store at: -20°C

### Summary

Product Description	Rabbit Polyclonal antibody recognizes CD107b / LAMP2
Tested Reactivity	Hu
Tested Application	IHC-P, WB
Host	Rabbit
Clonality	Polyclonal
Isotype	IgG
Target Name	CD107b / LAMP2
Species	Human
Immunogen	Synthetic peptide corresponding to Human CD107b / LAMP2.
Conjugation	Un-conjugated
Alternate Names	CD antigen CD107b; LAMPB; CD107b; LGP110; Lysosome-associated membrane glycoprotein 2; LAMP-2; CD107 antigen-like family member B; Lysosome-associated membrane protein 2

### Application Instructions

Application table	Application	Dilution
	IHC-P	1:50 - 1:100
	WB	1:500 - 1:1000
Application Note	* The dilutions indicate recommended starting dilutions and the optimal dilutions or concentrations should be determined by the scientist.	
Positive Control	HeLa	
Observed Size	100-130 kDa	

### Properties

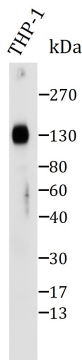
Form	Liquid
Purification	Affinity purified.
Buffer	50 mM Tris-Glycine (pH 7.4), 150 mM NaCl, 0.01% Sodium azide, 40% Glycerol and 0.05% BSA.
Preservative	0.01% Sodium azide
Stabilizer	40% Glycerol and 0.05% BSA
Concentration	Batch dependent
Storage instruction	For continuous use, store undiluted antibody at 2-8°C for up to a week. For long-term storage, aliquot and store at -20°C. Storage in frost free freezers is not recommended. Avoid repeated freeze/thaw cycles. Suggest spin the vial prior to opening. The antibody solution should be gently mixed before use.

Note For laboratory research only, not for drug, diagnostic or other use.

## Bioinformation

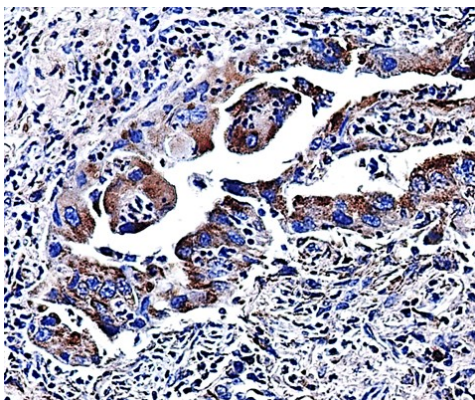
Gene Symbol	LAMP2
Gene Full Name	lysosomal-associated membrane protein 2
Background	The protein encoded by this gene is a member of a family of membrane glycoproteins. This glycoprotein provides selectins with carbohydrate ligands. It may play a role in tumor cell metastasis. It may also function in the protection, maintenance, and adhesion of the lysosome. Alternative splicing of this gene results in multiple transcript variants encoding distinct proteins. [provided by RefSeq, Jul 2008]
Function	Implicated in tumor cell metastasis. May function in protection of the lysosomal membrane from autodigestion, maintenance of the acidic environment of the lysosome, adhesion when expressed on the cell surface (plasma membrane), and inter- and intracellular signal transduction. Protects cells from the toxic effects of methylating mutagens. [UniProt]
Calculated Mw	45 kDa
PTM	O- and N-glycosylated; some of the 16 N-linked glycans are polylactosaminoglycans.

## Images



ARG43772 anti-CD107b / LAMP2 antibody WB image

Western blot: THP-1 cell lysate stained with ARG43772 anti-CD107b / LAMP2 antibody at 1:1000 dilution, overnight at 4°C.



ARG43772 anti-CD107b / LAMP2 antibody IHC-P image

Immunohistochemistry: Paraffin-embedded Human lung cancer tissue stained with ARG43772 anti-CD107b / LAMP2 antibody.