

## ARG43777 anti-Prominin 1 antibody

Package: 100 µl  
Store at: -20°C

### Summary

Product Description	Rabbit Polyclonal antibody recognizes Prominin 1
Tested Reactivity	Hu, Ms, Rat
Tested Application	FACS, IHC-P
Host	Rabbit
Clonality	Polyclonal
Isotype	IgG
Target Name	Prominin 1
Species	Human
Immunogen	Synthetic peptide of Human Prominin-1
Conjugation	Un-conjugated
Alternate Names	CORD12; CD133; RP41; Antigen AC133; MCDR2; CD antigen CD133; PROML1; AC133; Prominin-like protein 1; Prominin-1; MSTP061; STGD4

### Application Instructions

Application table	Application	Dilution
	FACS	1:10 - 1:50
	IHC-P	1:50 - 1:100
Application Note	* The dilutions indicate recommended starting dilutions and the optimal dilutions or concentrations should be determined by the scientist.	

### Properties

Form	Liquid
Purification	Saturated Ammonium Sulfate (SAS) precipitation followed by dialysis against PBS.
Buffer	PBS and 0.09% (W/V) Sodium azide.
Preservative	0.09% (W/V) Sodium azide.
Storage instruction	For continuous use, store undiluted antibody at 2-8°C for up to a week. For long-term storage, aliquot and store at -20°C. Storage in frost free freezers is not recommended. Avoid repeated freeze/thaw cycles. Suggest spin the vial prior to opening. The antibody solution should be gently mixed before use.
Note	For laboratory research only, not for drug, diagnostic or other use.

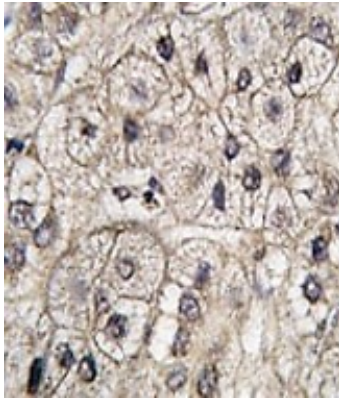
### Bioinformation

Gene Symbol	PROM1
-------------	-------

<b>Gene Full Name</b>	prominin 1
<b>Background</b>	This gene encodes a pentaspan transmembrane glycoprotein. The protein localizes to membrane protrusions and is often expressed on adult stem cells, where it is thought to function in maintaining stem cell properties by suppressing differentiation. Mutations in this gene have been shown to result in retinitis pigmentosa and Stargardt disease. Expression of this gene is also associated with several types of cancer. This gene is expressed from at least five alternative promoters that are expressed in a tissue-dependent manner. Multiple transcript variants encoding different isoforms have been found for this gene. [provided by RefSeq, Mar 2009]
<b>Function</b>	May play a role in cell differentiation, proliferation and apoptosis. Binds cholesterol in cholesterol-containing plasma membrane microdomains and may play a role in the organization of the apical plasma membrane in epithelial cells. During early retinal development acts as a key regulator of disk morphogenesis. Involved in regulation of MAPK and Akt signaling pathways. In neuroblastoma cells suppresses cell differentiation such as neurite outgrowth in a RET-dependent manner. [UniProt]
<b>Calculated Mw</b>	97 kDa
<b>PTM</b>	Isoform 1 and isoform 2 are glycosylated. Acetylation at Lys-225, Lys-257 and Lys-264 by NAT8 and NAT8B may control PROM1 protein expression and its function in cell apoptosis.

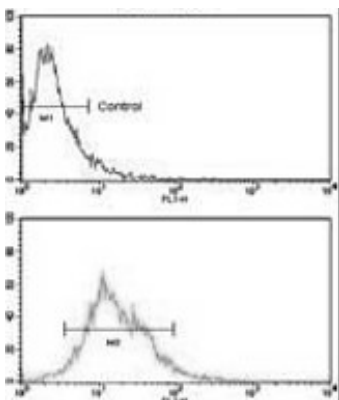
## Images

---



ARG43777 anti-Prominin 1 antibody IHC-P image

Immunohistochemistry: Paraffin-embedded Human hepatocarcinoma tissue stained with ARG43777 anti-Prominin 1 antibody at 1:100 dilution.



ARG43777 anti-Prominin 1 antibody FACS image

Flow Cytometry: CEM cells stained with ARG43777 anti-Prominin 1 antibody (bottom histogram) or without primary antibody control (top histogram).