

ARG43779 anti-ELOVL7 antibody

Package: 50 µg
Store at: -20°C

Summary

Product Description	Rabbit Polyclonal antibody recognizes ELOVL7
Tested Reactivity	Hu, Ms
Predict Reactivity	Bov, Rat
Tested Application	IHC-P, WB
Host	Rabbit
Clonality	Polyclonal
Isotype	IgG
Target Name	ELOVL7
Species	Human
Immunogen	Synthetic peptide (15 aa) within aa. 40-90 of Human ELOVL7.
Conjugation	Un-conjugated
Alternate Names	ELOVL7; ELOVL Fatty Acid Elongase 7; Elongation Of Very Long Chain Fatty Acids Protein 7; Very Long Chain 3-Ketoacyl-CoA Synthase 7; Very Long Chain 3-Oxoacyl-CoA Synthase 7; 3-Keto Acyl-CoA Synthase ELOVL7; ELOVL FA Elongase 7; ELOVL Family Member 7, Elongation Of Long Chain Fatty Acids (Yeast); ELOVL Family Member 7, Elongation Of Long Chain Fatty Acids

Application Instructions

Predict Reactivity Note	Rat (100%), Bovine (100%)						
Application table	<table> <tr> <th>Application</th><th>Dilution</th></tr> <tr> <td>IHC-P</td><td>5 µg/ml - 20 µg/ml</td></tr> <tr> <td>WB</td><td>1:500 - 1:1000</td></tr> </table>	Application	Dilution	IHC-P	5 µg/ml - 20 µg/ml	WB	1:500 - 1:1000
Application	Dilution						
IHC-P	5 µg/ml - 20 µg/ml						
WB	1:500 - 1:1000						
Application Note	* The dilutions indicate recommended starting dilutions and the optimal dilutions or concentrations should be determined by the scientist.						
Positive Control	Human Liver tissue						
Observed Size	33-38 kDa						

Properties

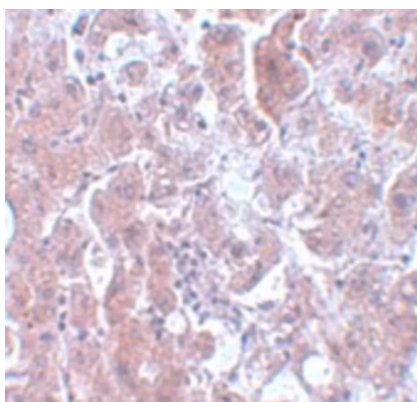
Form	Liquid
Purification	Affinity purification with immunogen.
Buffer	PBS and 0.02% Sodium azide.
Preservative	0.02% Sodium azide
Concentration	1 mg/ml

Storage instruction	For continuous use, store undiluted antibody at 2-8°C for up to a week. For long-term storage, aliquot and store at -20°C or below. Storage in frost free freezers is not recommended. Avoid repeated freeze/thaw cycles. Suggest spin the vial prior to opening. The antibody solution should be gently mixed before use.
Note	For laboratory research only, not for drug, diagnostic or other use.

Bioinformation

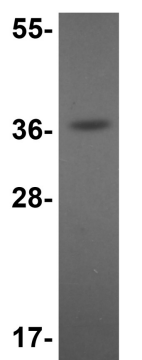
Gene Symbol	ELOVL7
Gene Full Name	ELOVL fatty acid elongase 7
Background	ELOVL7 enables fatty acid elongase activity. Involved in fatty acid elongation, polyunsaturated fatty acid; fatty acid elongation, saturated fatty acid; and very long-chain fatty acid biosynthetic process. Located in endoplasmic reticulum. [provided by Alliance of Genome Resources, Apr 2022]
Function	Catalyzes the first and rate-limiting reaction of the four reactions that constitute the long-chain fatty acids elongation cycle. This endoplasmic reticulum-bound enzymatic process allows the addition of 2 carbons to the chain of long- and very long-chain fatty acids (VLCFAs) per cycle. Condensing enzyme with higher activity toward C18 acyl-CoAs, especially C18:3(n-3) acyl-CoAs and C18:3(n-6)-CoAs. Also active toward C20:4-, C18:0-, C18:1-, C18:2- and C16:0-CoAs, and weakly toward C20:0-CoA. Little or no activity toward C22:0-, C24:0-, or C26:0-CoAs. May participate in the production of saturated and polyunsaturated VLCFAs of different chain lengths that are involved in multiple biological processes as precursors of membrane lipids and lipid mediators. [UniProt]
Calculated Mw	33.3 kDa

Images



ARG43779 anti-ELOVL7 antibody IHC-P image

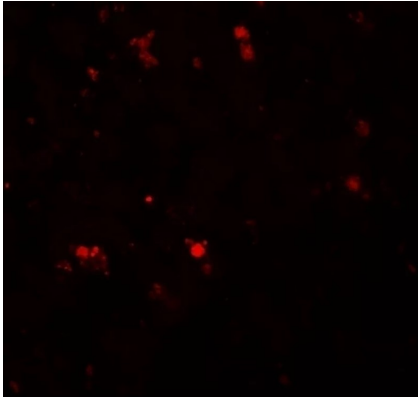
Immunohistochemistry: Paraffin-embedded Human liver tissue stained with ARG43779 anti-ELOVL7 antibody at 5 µg/ml dilution.



Human Liver tissue

ARG43779 anti-ELOVL7 antibody WB image

Western blot: Human liver lysate stained with ARG43779 anti-ELOVL7 antibody at 1 µg/ml dilution.



ARG43779 anti-ELOVL7 antibody IHC-P image

Immunohistochemistry: Paraffin-embedded Human liver tissue stained with ARG43779 anti-ELOVL7 antibody at 20 µg/ml dilution and then incubated with fluorescence-conjugated anti-rabbit IgG antibody.