

ARG43787 anti-Nkx 6.1 antibody [NKX61/2561]

Package: 50 µg
Store at: -20°C

Summary

| | |
|---------------------|---|
| Product Description | Mouse Monoclonal antibody [NKX61/2561] recognizes Nkx 6.1 |
| Tested Reactivity | Hu, Rat |
| Tested Application | IHC-P |
| Host | Mouse |
| Clonality | Monoclonal |
| Clone | NKX61/2561 |
| Isotype | IgG2c, kappa |
| Target Name | Nkx 6.1 |
| Species | Human |
| Immunogen | Human Nkx6.1 recombinant protein. |
| Conjugation | Un-conjugated |
| Alternate Names | NKX6-1 NK6 homeobox 1; Nkx6.1; NKX6A; Homeobox Protein NK-6 Homolog A; Homeobox Protein Nkx-6.1; Nkx6.1; NK6 Transcription Factor Related, Locus 1 (Drosophila); NK6 Transcription Factor Related, Locus 1; NK Homeobox (Drosophila), Family 6, A; NK6 Transcription Factor Homolog A; NK Homeo Box, Family 6, Member A; NK Homeobox, Family 6, A; NKX6.1 |

Application Instructions

| | | |
|-------------------|---|------------------------------|
| Application table | Application | Dilution |
| | IHC-P | 1 - 2 µg/ml for 30 min at RT |
| Application Note | IHC-P: Antigen Retrieval: Boil tissue section in 10 mM Citrate buffer (pH 6.0) for 10-20 min, followed by cooling at RT for 20 min. After epitope retrieval step stain tissue section at RT for 30 min. * The dilutions indicate recommended starting dilutions and the optimal dilutions or concentrations should be determined by the scientist. | |
| Positive Control | Human pancreas | |

Properties

| | |
|---------------------|--|
| Form | Liquid |
| Purification | Purification with Protein G. |
| Buffer | PBS (pH 7.4), 0.05% Sodium azide and 0.1 mg/ml BSA. |
| Preservative | 0.05% Sodium azide |
| Stabilizer | 0.1 mg/ml BSA |
| Concentration | 0.2 mg/ml |
| Storage instruction | For continuous use, store undiluted antibody at 2-8°C for up to a week. For long-term storage, aliquot |

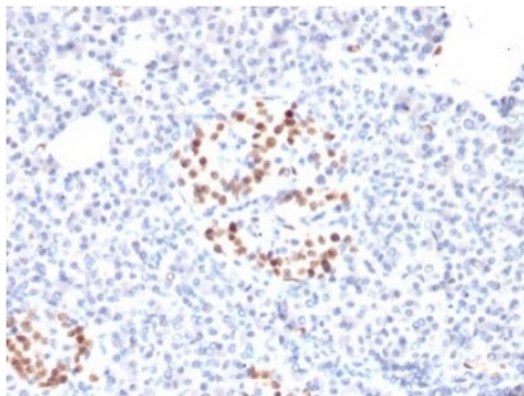
and store at -20°C or below. Storage in frost free freezers is not recommended. Avoid repeated freeze/thaw cycles. Suggest spin the vial prior to opening. The antibody solution should be gently mixed before use.

Note For laboratory research only, not for drug, diagnostic or other use.

Bioinformation

| | |
|-----------------------|--|
| Gene Symbol | NKX6-1 |
| Gene Full Name | NK6 homeobox 1 |
| Background | The protein encoded by this gene contains a homeobox domain and may be involved in the morphogenesis of the central nervous system. This gene is found on chromosome 20 near NKX2-4, and these two genes appear to be duplicated on chromosome 14 in the form of TITF1 and NKX2-8. The encoded protein is likely to be a nuclear transcription factor. [provided by RefSeq, Jul 2008] |
| Function | Acts as a transcriptional activator. Required for the maintenance of NEUROD1 expression in the hormone-producing endocrine cells of the pancreas. May be involved in specifying diencephalic neuromeric boundaries, and in controlling the expression of genes that play a role in axonal guidance. Associates with chromatin at the NEUROD1 promoter region. Binds to a subset of consensus elements within the NEUROD1 promoter (By similarity). [UniProt] |
| Calculated Mw | 30 kDa |
| Cellular Localization | Nuclear |

Images



ARG43787 anti-Nkx 6.1 antibody [NKX61/2561] IHC-P image

Immunohistochemistry: Human pancreas stained with ARG43787 anti-Nkx 6.1 antibody [NKX61/2561]. Antigen retrieval: boil tissue sections in pH6, 10mM citrate buffer, for 10-20 min and allow to cool before testing.