

ARG43877 anti-RAB43 antibody

Package: 50 µg
Store at: -20°C

Summary

Product Description	Rabbit Polyclonal antibody recognizes RAB43
Tested Reactivity	Hu
Tested Application	ELISA, FACS, ICC/IF, WB
Host	Rabbit
Clonality	Polyclonal
Isotype	IgG
Target Name	RAB43
Species	Human
Immunogen	Human RAB43 recombinant protein
Conjugation	Un-conjugated
Alternate Names	RAB43; RAB43; Member RAS Oncogene Family; RAB41; RAB11B; Ras-Related Protein Rab-43; Ras-Related Protein Rab-41; ISY1

Application Instructions

Application table	Application	Dilution
	ELISA	0.1-0.5 µg/ml
	FACS	1-3 µg / 10 ⁶ cells
	ICC/IF	5 µg/ml
	WB	0.25-0.5 µg/ml
Application Note	* The dilutions indicate recommended starting dilutions and the optimal dilutions or concentrations should be determined by the scientist.	

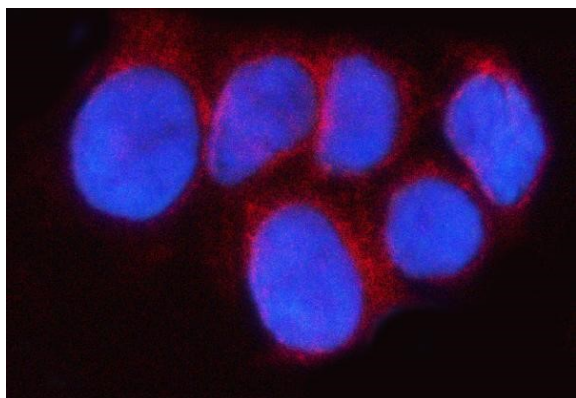
Properties

Form	Liquid
Purification	Affinity purified with Immunogen.
Buffer	0.9% NaCl, 0.2% Na ₂ HPO ₄ and 4% Trehalose.
Stabilizer	4% Trehalose
Concentration	0.5 mg/ml
Storage instruction	For continuous use, store undiluted antibody at 2-8°C for up to a week. For long-term storage, aliquot and store at -20°C or below. Storage in frost free freezers is not recommended. Avoid repeated freeze/thaw cycles. Suggest spin the vial prior to opening. The antibody solution should be gently mixed before use.

Bioinformation

Gene Symbol	RAB43
Gene Full Name	RAB43, Member RAS Oncogene Family
Function	Enables GTPase activity. Involved in several processes, including Golgi organization; phagosome maturation; and retrograde transport, plasma membrane to Golgi. Located in Golgi apparatus and phagocytic vesicle.
Highlight	The small GTPases Rab are key regulators of intracellular membrane trafficking, from the formation of transport vesicles to their fusion with membranes. Rabs cycle between an inactive GDP-bound form and an active GTP-bound form that is able to recruit to membranes different set of downstream effectors directly responsible for vesicle formation, movement, tethering and fusion. The low intrinsic GTPase activity of RAB43 is activated by USP6NL. Involved in retrograde transport from the endocytic pathway to the Golgi apparatus. Involved in the transport of Shiga toxin from early and recycling endosomes to the trans-Golgi network. Required for the structural integrity of the Golgi complex. Plays a role in the maturation of phagosomes that engulf pathogens, such as <i>S.aureus</i> and <i>M.tuberculosis</i> .
Calculated Mw	23 kDa
PTM	Lipoprotein, Methylation, Phosphoprotein, Prenylation
Cellular Localization	Cytoplasmic vesicle, Golgi apparatus, Membrane

Images



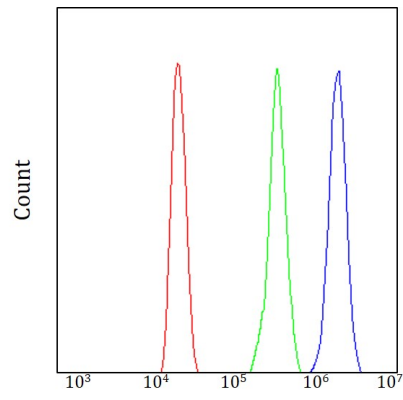
ARG43877 anti-RAB43 antibody ICC/IF image

Immunofluorescence: MCF-7 cells stained with ARG43877 anti-RAB43 antibody at 1:500 dilution.



ARG43877 anti-RAB43 antibody WB image

Western blot: HepG2 stained with ARG43877 anti-RAB43 antibody at 1:5000 dilution.



ARG43877 anti-RAB43 antibody FACS image

Flow Cytometry: HL-60 cells stained with ARG43877 anti-RAB43 antibody (blue) at $1\text{ }\mu\text{g}/1\times 10^6$ cells dilution.