

**ARG43883**  
**anti-RIOK2 antibody**Package: 50 µg  
Store at: -20°C

### Summary

|                     |  |
|---------------------|--|
| Product Description | Rabbit Polyclonal antibody recognizes RIOK2  |
| Tested Reactivity   | Hu   |
| Tested Application  | ELISA, FACS, WB  |
| Host                | Rabbit   |
| Clonality           | Polyclonal   |
| Isotype             | IgG  |
| Target Name         | RIOK2  |
| Species             | Human  |
| Immunogen           | Human RIOK2 recombinant protein  |
| Conjugation         | Un-conjugated  |
| Alternate Names     | RIOK2; RIO Kinase 2; Serine/Threonine-Protein Kinase RIO2; FLJ11159; RIO2; RIO Kinase 2 (Yeast); EC 2.7.11.1 |

### Application Instructions

| Application table | Application  | Dilution                       |
|-------------------|--|--------------------------------|
|                   | ELISA  | 0.1-0.5 µg/ml                  |
|                   | FACS   | 1-3 µg/1x10 <sup>6</sup> cells |
|                   | WB   | 0.25-0.5 µg/ml                 |
| Application Note  | * The dilutions indicate recommended starting dilutions and the optimal dilutions or concentrations should be determined by the scientist. |                                |

### Properties

|                     |  |
|---------------------|--|
| Form                | Liquid   |
| Purification        | Affinity purified with Immunogen.  |
| Buffer              | 0.9% NaCl, 0.2% Na <sub>2</sub> HPO <sub>4</sub> and 4% Trehalose.   |
| Stabilizer          | 4% Trehalose   |
| Concentration       | 0.5 mg/ml  |
| Storage instruction | For continuous use, store undiluted antibody at 2-8°C for up to a week. For long-term storage, aliquot and store at -20°C or below. Storage in frost free freezers is not recommended. Avoid repeated freeze/thaw cycles. Suggest spin the vial prior to opening. The antibody solution should be gently mixed before use. |
| Note                | For laboratory research only, not for drug, diagnostic or other use.   |

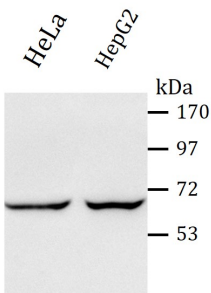
Bioinformation

|                       |   |
|-----------------------|---|
| Gene Symbol           | RIOK2   |
| Gene Full Name        | RIO Kinase 2  |
| Background            | Predicted to enable protein kinase activity. Involved in several processes, including positive regulation of rRNA processing; positive regulation of ribosomal small subunit export from nucleus; and regulation of mitotic metaphase/anaphase transition. Located in cytoplasm. Part of preribosome, small subunit precursor.  |
| Function              | Serine/threonine-protein kinase involved in the final steps of cytoplasmic maturation of the 40S ribosomal subunit. Involved in export of the 40S pre-ribosome particles (pre-40S) from the nucleus to the cytoplasm. Its kinase activity is required for the release of NOB1, PNO1 and LTV1 from the late pre-40S and the processing of 18S-E pre-rRNA to the mature 18S rRNA. |
| Calculated Mw         | 63 kDa  |
| PTM                   | Phosphoprotein  |
| Cellular Localization | Cytoplasm   |

Images

ARG43883 anti-RIOK2 antibody WB image

Western blot: Hela and HepG2 stained withARG43883 anti-RIOK2 antibody at 0.5 µg/mL dilution.



ARG43883 anti-RIOK2 antibody FACS image

Flow Cytometry: HL-60 cells stained with ARG43883 anti-RIOK2 antibody (blue) at 1 µg/1x10^6 cells dilution.

