

ARG43892 anti-PLVAP antibody

Package: 50 µg
Store at: -20°C

Summary

Product Description	Rabbit Polyclonal antibody recognizes PLVAP
Tested Reactivity	Hu
Tested Application	ELISA, FACS, WB
Host	Rabbit
Clonality	Polyclonal
Isotype	IgG
Target Name	PLVAP
Species	Human
Immunogen	Human PLVAP recombinant protein
Conjugation	Un-conjugated
Alternate Names	PLVAP; Plasmalemma Vesicle Associated Protein; PV-1; FELS; PV1; Gp68; Fenestrated-Endothelial Linked Structure Protein; PV-1 Protein; Fenestrated Endothelial-Linked Structure Protein; Plasmalemma Vesicle-Associated Protein; Plasmalemma Vesicle Protein 1; DIAR10

Application Instructions

Application table	Application	Dilution
	ELISA	0.1-0.5 µg/ml
	FACS	1-3 µg/1x10 ⁶ cells
	WB	0.25-0.5 µg/ml
Application Note	* The dilutions indicate recommended starting dilutions and the optimal dilutions or concentrations should be determined by the scientist.	

Properties

Form	Liquid
Purification	Affinity purified with Immunogen.
Buffer	0.9% NaCl, 0.2% Na ₂ HPO ₄ and 4% Trehalose.
Stabilizer	4% Trehalose
Concentration	0.5 mg/ml
Storage instruction	For continuous use, store undiluted antibody at 2-8°C for up to a week. For long-term storage, aliquot and store at -20°C or below. Storage in frost free freezers is not recommended. Avoid repeated freeze/thaw cycles. Suggest spin the vial prior to opening. The antibody solution should be gently mixed before use.
Note	For laboratory research only, not for drug, diagnostic or other use.

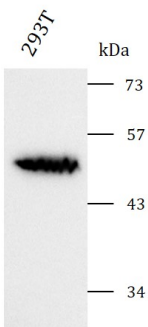
Bioinformation

Gene Symbol	PLVAP
Gene Full Name	Plasmalemma Vesicle Associated Protein
Background	Predicted to enable identical protein binding activity. Involved in MAPK cascade; positive regulation of cellular extravasation; and tumor necrosis factor-mediated signaling pathway. Located in cell surface. Colocalizes with caveola. Implicated in congenital diarrhea.
Function	Endothelial cell-specific membrane protein involved in the formation of the diaphragms that bridge endothelial fenestrae. It is also required for the formation of stomata of caveolae and transendothelial channels. Functions in microvascular permeability, endothelial fenestrae contributing to the passage of water and solutes and regulating transcellular versus paracellular flow in different organs. Plays a specific role in embryonic development.
Calculated Mw	51 kDa
PTM	Glycoprotein
Cellular Localization	Cell membrane, Cytoplasm, Membrane

Images

ARG43892 anti-PLVAP antibody WB image

Western blot: 293T ARG43892 anti-PLVAP antibody at 0.5 µg/mL dilution.



ARG43892 anti-PLVAP antibody FACS image

Flow Cytometry: HEL cells stained with ARG43892 anti-PLVAP antibody (blue) at 1 µg/1x10⁶ cells dilution.

