

ARG43893 anti-PLXDC2 antibody

Package: 50 µg
Store at: -20°C

Summary

Product Description	Rabbit Polyclonal antibody recognizes PLXDC2
Tested Reactivity	Hu
Tested Application	ELISA, FACS, IHC-P, WB
Host	Rabbit
Clonality	Polyclonal
Isotype	IgG
Target Name	PLXDC2
Species	Human
Immunogen	Human PLXDC2 recombinant protein
Conjugation	Un-conjugated
Alternate Names	PLXDC2; Plexin Domain Containing 2; TEM7R; Tumor Endothelial Marker 7-Related Protein; Plexin Domain-Containing Protein 2; PLXDC2-OT; FLJ14623; Tumor Endothelial Marker 7-Related Precursor; 1200007L24Rik

Application Instructions

Application table	Application	Dilution
	ELISA	0.1-0.5 µg/ml
	FACS	1-3 µg /1x10 ⁶
	IHC-P	2-5 µg/ml
	WB	0.25-0.5 µg/ml
Application Note	* The dilutions indicate recommended starting dilutions and the optimal dilutions or concentrations should be determined by the scientist.	

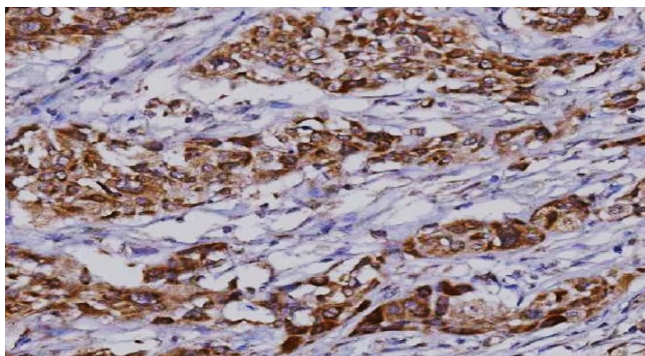
Properties

Form	Liquid
Purification	Affinity purified with Immunogen.
Buffer	0.9% NaCl, 0.2% Na ₂ HPO ₄ and 4% Trehalose.
Stabilizer	4% Trehalose
Concentration	0.5 mg/ml
Storage instruction	For continuous use, store undiluted antibody at 2-8°C for up to a week. For long-term storage, aliquot and store at -20°C or below. Storage in frost free freezers is not recommended. Avoid repeated freeze/thaw cycles. Suggest spin the vial prior to opening. The antibody solution should be gently mixed before use.

Bioinformation

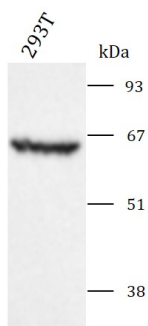
Gene Symbol	PLXDC2
Gene Full Name	Plexin Domain Containing 2
Background	Predicted to be integral component of membrane.
Function	May play a role in tumor angiogenesis.
Calculated Mw	60 kDa
PTM	Glycoprotein, Phosphoprotein
Cellular Localization	Cell membrane

Images



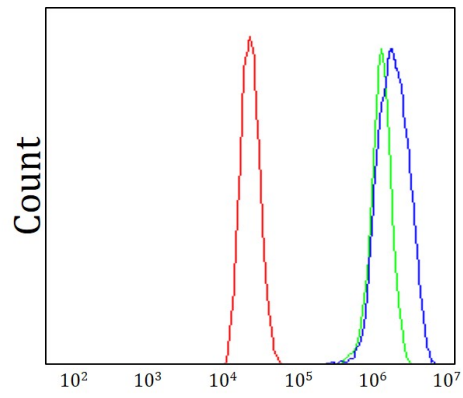
ARG43893 anti-PLXDC2 antibody IHC-P image

Immunohistochemistry: Human lymphoma stained with ARG43893 anti-PLXDC2 antibody at 2 µg/ml dilution.



ARG43893 anti-PLXDC2 antibody WB image

Western blot: 293T stained with ARG43893 anti-PLXDC2 antibody at 0.5 µg/mL dilution.



ARG43893 anti-PLXDC2 antibody FACS image

Flow Cytometry: Caco-2 cells stained with ARG43893 anti-PLXDC2 antibody (blue) at $1\text{ }\mu\text{g}/1\times 10^6$ cells dilution.