

## ARG43899 anti-CD66e / CEA antibody

Package: 50 µg  
Store at: -20°C

### Summary

Product Description	Rabbit Polyclonal antibody recognizes CD66e / CEA
Tested Reactivity	Hu
Tested Application	ELISA, FACS, WB
Host	Rabbit
Clonality	Polyclonal
Isotype	IgG
Target Name	CD66e / CEA
Species	Human
Immunogen	Human CD66e / CEA recombinant protein
Conjugation	Un-conjugated
Alternate Names	CEACAM5; CEA Cell Adhesion Molecule 5; Carcinoembryonic Antigen-Related Cell Adhesion Molecule 5; CD66e; CEA; Carcinoembryonic Antigen Related Cell Adhesion Molecule 5; Meconium Antigen 100; Carcinoembryonic Antigen; CD66e Antigen

### Application Instructions

Application table	Application	Dilution
	ELISA	0.1-0.5 µg/ml
	FACS	1-3 µg/1x10 <sup>6</sup>
	WB	0.1-0.25 µg/ml
Application Note	* The dilutions indicate recommended starting dilutions and the optimal dilutions or concentrations should be determined by the scientist.	

### Properties

Form	Liquid
Purification	Affinity purified with Immunogen.
Buffer	0.9% NaCl, 0.2% Na <sub>2</sub> HPO <sub>4</sub> and 4% Trehalose.
Stabilizer	4% Trehalose
Concentration	0.5 mg/ml
Storage instruction	For continuous use, store undiluted antibody at 2-8°C for up to a week. For long-term storage, aliquot and store at -20°C or below. Storage in frost free freezers is not recommended. Avoid repeated freeze/thaw cycles. Suggest spin the vial prior to opening. The antibody solution should be gently mixed before use.
Note	For laboratory research only, not for drug, diagnostic or other use.

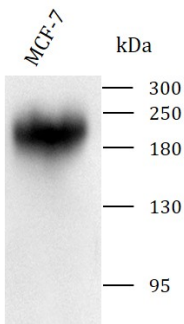
Bioinformation

Gene Symbol	CEACAM5
Gene Full Name	CEA Cell Adhesion Molecule 5
Background	This gene encodes a cell surface glycoprotein that represents the founding member of the carcinoembryonic antigen (CEA) family of proteins. The encoded protein is used as a clinical biomarker for gastrointestinal cancers and may promote tumor development through its role as a cell adhesion molecule. Additionally, the encoded protein may regulate differentiation, apoptosis, and cell polarity. This gene is present in a CEA family gene cluster on chromosome 19. Alternative splicing results in multiple transcript variants.
Function	Cell surface glycoprotein that plays a role in cell adhesion, intracellular signaling and tumor progression.
Calculated Mw	77 kDa
PTM	Disulfide bond, Glycoprotein, GPI-anchor, Lipoprotein
Cellular Localization	Membrane

Images

ARG43899 anti-CD66e / CEA antibody WB image

Western blot: MCF-7 stained with ARG43899 anti-CD66e / CEA antibody at 0.5 µg/mL dilution.



ARG43899 anti-CD66e / CEA antibody FACS image

Flow Cytometry: PC-3 cells stained with ARG43899 anti-CD66e / CEA antibody (blue) at 1 µg/1x10<sup>6</sup> cells dilution.

